

**MINUTES OF ORDINARY MEETING OF YARRIAMBIACK SHIRE COUNCIL HELD ON WEDNESDAY 27 JULY 2016 AT THE MUNICIPAL OFFICE 34 LYLE STREET WARRACKNABEAL AT 9:30AM**

---

**1 WELCOME**

**2 ACKNOWLEDGEMENT**

We acknowledge the traditional owners of the land on which we meet today and pay our respect to both past and present elders.

**3 PRAYER**

*Almighty God, without whom no Council can stand nor anything prosper we ask that you be present and guide us in our deliberations today. We pray that we will be fair in our judgements and wise in our actions and that decisions will be made with goodwill and a clear conscience for the betterment and welfare of the people of Yarriambiack Shire.*

*Amen*

**4 PRESENT**

Cr R Kingston, Cr A McLean, Cr K Zanker, Cr H Ballentine, Cr G Massey, Cr L Woods, Ray Camping (Chief Executive Officer), James Magee (Director Infrastructure & Planning) and Bernardine Schilling (Executive Assistant)

**5 APOLOGIES**

Cr T Grange

**6 CONFIRMATION OF MINUTES**

Ordinary Meeting of Council – 22 June 2016

**Moved Cr L Woods seconded Cr G Massey the Minutes of the Ordinary Meeting of Council held on 22 June 2016 be confirmed.**

**Carried**

Closed Session of Council – 22 June 2016

**Moved Cr G Massey seconded Cr K Zanker the Minutes of the Closed Session of Council held on 22 June 2016 be confirmed.**

**Carried**

Special Meeting of Council – 13 July 2016

**Moved Cr L Woods seconded Cr K Zanker the Minutes of the Special Meeting of Council held on 22 June 2016 be confirmed.**

**Carried**

## **7 DECLARATION OF CONFLICT OF INTEREST**

## **8 BUSINESS ARISING**

### **8.1 Action List from last meeting**

### **8.2 Ongoing and Pending Action List**

Moved Cr A McLean seconded Cr H Ballentine that Council write to Vicroad's Ewen Nevett and to the Minister of Transport, Luke Donnellan with the request of constructing guardrail on the Henty Highway bridge located south of Hopetoun.

**Letters sent: 12 May 2016, Ref: BS: 83-2016 – Response received 13 July 2016.**

## **9 PETITIONS**

## **10 REPORTS**

### **Corporate Reports**

- 10.1 Mayor's Report
- 10.2 Councillor's Reports
- 10.3 Chief Executive Officer – Activity Report
- 10.4 Director Infrastructure & Planning Report
- 10.5 Capital Works Program Report
- 10.6 Community Services Report
- 10.7 Infrastructure Services Report
- 10.8 Community Projects Report

## **11 REPORTS FOR DECISION**

- 11.1 Finance Report
- 11.2 Revenue Report
- 11.3 Request for the Unused Road Reserve off Kewell North School Road be Discontinued

**10.1 Mayor's Report – Prepared by Ray Kingston**

23 June	Chaired final 'Lighting the Regions' Project Partnership meeting at St Arnaud
27 June	Attended Brim Active Community Group meeting – provided information about Silo Art Trail plans
29 June	Attended Murtoa Community Engagement – well attended, positive night
06 July	Attended Minyip Progress Association meeting
06 July	Attended Minyip Lions Club Changeover Dinner
07 July	Meeting with GrainCorp executives – re mapping out and planning process for Silo Art Trail
11 July	Presented at Warracknabeal Secondary College Assembly – introduced new members of Yarriambiack Youth Action Council
11 July	Attended the Youth action committee presentations with Mayor Kingston at WSC
13 July	Council Forum – including Special meeting of Council, Finance meeting and regular Victoria Police engagement
14 - 15 July	Attended Rail Freight Alliance meeting in Portland – tour of Port of Portland and update of Mallee Basin Rail Upgrade
20 July	Meeting at Brim re Brim Drought Event
22 July	Attended Regional Mayors Gathering in Ararat
22 July	Local Government Act Review Forum for Councillors and CEO's in Ararat
25 July	Attended Brim Community Engagement
26 July	Attended the Warracknabeal Cubs and Scouts Annual General Meeting

**10.2 Councillor's Reports****Cr H Ballentine**

25 June	Attended Opening of the Hopetoun Netball/Football change rooms with Peter Crisp
27 June	Attended Yarriambiack Tourism AGM , re-elected as Chair
01 July	Attended final meeting for Victorian Agricultural Sustainability Project in Horsham
13 July	Council Forum
19 July	Attended Wimmera Mallee Tourism meeting in Sea Lake
19 July	Attended Yaapeet Community Engagement Visitation in Yaapeet
25 July	Attended Brim Community Engagement Visitation

**Cr G Massey**

25 June	Opened Warracknabeal Band's 130 <sup>th</sup> Anniversary Concert at Town Hall
27 June	Attended Yarriambiack Tourism meeting in Minyip
29 June	Attended Murtoa Community Engagement Visitation
05 July	Met Historical Society members at Wheatlands Museum with Bernie Naylor and Mick Evans
05 July	Attended Warracknabeal Action Group meeting
11 July	Attended meeting re levees at Warracknabeal
12 July	Attended 150 <sup>th</sup> Warracknabeal Anniversary Committee
13 July	Council Forum
18 July	Chaired Senior Citizens AGM with Gavin Blinman & Daryl Argall
19 July	Attended Yaapeet Community Engagement Visitation
25 July	Attended Brim Community Engagement Visitation
26 July	Attended the Warracknabeal Cubs and Scouts Annual General Meeting

**Cr K Zanker**

22 June	Attended Internal Audit Committee meeting
25 June	Attended Opening of the Hopetoun Netball/Football change rooms with Peter Crisp
28 June	Attended Hub general meeting
28 June	Attended Volunteering Western Victoria meeting
11 July	Attended the Youth action committee presentations with Mayor Kingston at WSC
13 July	Council forum
13 July	Attended Youth Action Council Meeting
19 July	Attended Yaapect Community Consultation visitation
20 July	Attended Linking Learning WORDS meeting
25 July	Attended Brim Community Consultation meeting
26 July	Attended the Warracknabeal Cubs and Scouts Annual General Meeting
26 July	Attended Volunteering Western Victoria special/extraordinary meeting
26 July	Attended HUB - special/extraordinary meeting

**Cr L Woods**

22 June	Attended Council Internal Audit Committee meeting in Warracknabeal
13 July	Council Forum
14 July	Attended the Local Learning Luncheon
24 July	Attended the Warracknabeal Communities Club Expo

**Cr A McLean**

- 25 June                      Attended Opening of the Hopetoun Netball/Football change rooms with Peter Crisp
- 08 July                      Attended the Audit and Board meeting of Grampians Central West Waste and Resource Recovery Group in Melbourne
- 13 July                      Council Forum
- 19 July                      Attended the Community Consultation meeting at Yaapeet
- 25 July                      Attended Brim Community Consultation meeting

**Cr T Grange**

- 22 June                      Council meeting
- 24 June                      Wimmera Highway Action Committee meeting at Beaufort
- 25 June                      Representing the Mayor attended the opening of new extensions to the Hopetoun Recreation Reserve at Hopetoun
- 06 July                      Representing the Mayor attended the Warracknabeal Rotary Club changeover dinner at Warracknabeal
- 12 July                      Attended the Wimmera Development Association Board meeting in Warracknabeal
- 13 July                      Council Forum
- 14 July                      Attended former councillor and Mayor Stewart Petering's funeral at Minyip
- 19 July                      Chaired the MEMPC meeting at Warracknabeal
- 19 July                      Attended the Yaapeet Community Engagement visitation at Yaapeet
- 25 July                      Attended the Brim Community Engagement visitation at Brim

**10.3 Chief Executive Officer, Activity Report – Prepared by Ray Campling**

- Attended Council's Internal Audit Committee meeting
- Met with Jill Whelan – YCHANGE Program
- Met with Adrian Tyler – E-Rup Lease of former Rupanyup Council premises
- Met with Victorian Electoral Commission representatives in relation to the 22 October 2016 Council elections
- Attended Wimmera CEO's meeting in Horsham
- Attended Rural Council's Victoria Briefing in Bendigo
- Chaired Yarriambiack Tourism Association AGM in Minyip
- Attended Wimmera Southern Mallee LLEN meeting in Horsham
- Met with Graeme Harrison, Director Corporate Services HRCC in relation to North West Municipalities Association Audit
- Attended Murtoa Community Engagement Visitation at the Murtoa Mechanics Institute Hall
- Attended Wimmera Southern Mallee Crime Prevention meeting in Ararat
- Attended the official launch of the Wimmera Development Association Business Awards at the Horsham Town Hall
- Attended Wimmera Development Association Finance Committee meeting
- Met with Councillor Judi Harris – Chair North West Municipalities Association – Secretary/Treasurer role and responsibilities
- Attended Brim and Warracknabeal Community Flood Study consultations
- Met with Chris Porter – Council's Telstra Contract
- With the Deputy Mayor hosted the Wimmera Development Association meeting in Warracknabeal
- Met with David Brennan, CEO, Wimmera Catchment Authority – Grant Funding
- Attended the HRCC Candidate Information Session in the capacity as the 'Visiting CEO'
- Attended former Mayor and Councillor Stewart Petering's funeral in Minyip
- Attended Violence Prevention meeting at Grampians Community Health in Horsham
- Represented Council at the Warracknabeal Lions Club Changeover Dinner
- Attended Brim Community Engagement Visitation at the Brim Memorial Hall
- Attended Volunteering Western Victoria meeting in Horsham
- Attended the Warracknabeal Communities Club Expo
- Attended Hopetoun Gaming Night



**10.4 Director Infrastructure & Planning Report – Prepared by James Magee****Line-marking in Rupanyup**

The main street of Rupanyup, Cromie Street has in past months been resealed and line-marked by Vicroads. The works were done on request of Council and the community. The line-marking has reverted traffic to a single lane through the business district, rather than the previous double lane, slowing traffic, reducing confusion and improving safety. Congratulations to Vicroads on achieving a great result.

**Automatic Weather Station (AWS) for Warracknabeal**

The installation of the AWS at Warracknabeal Aerodrome should occur in the next two months. Civil works are complete and the weather station equipment will be installed by the Bureau of Meteorology (BOM).

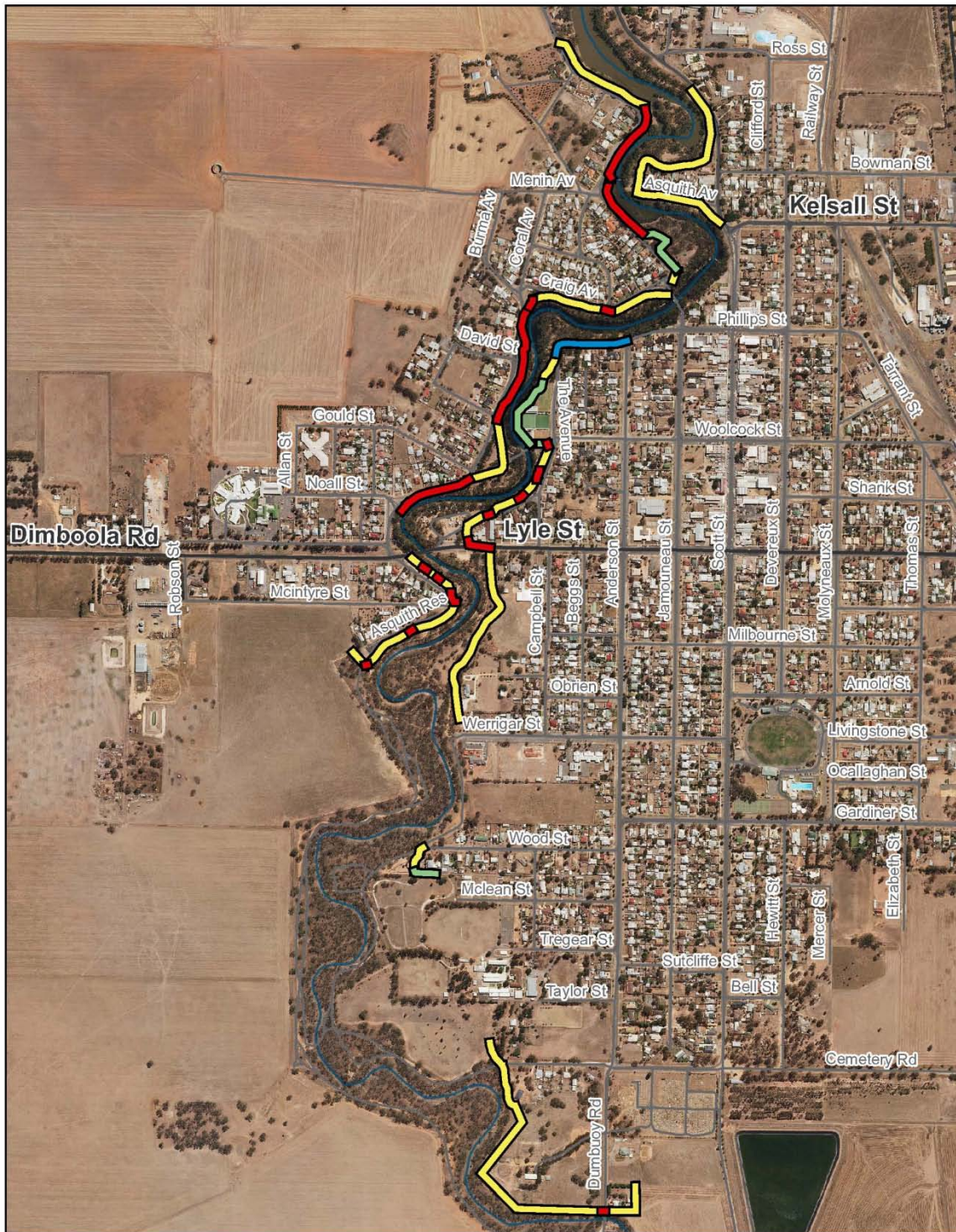
**Radar for the Wimmera**

Yarriambiack Shire is assisting the Wimmera Development Association (WDA) in finding a suitable location for the weather radar. The facility only requires a small piece of land but must be located on land in the ownership of Council or the Crown. A list and map of possible sites has been forwarded to the WDA who will liaise with the BOM

**Warracknabeal and Brim Community Meetings regarding Flood Study**

Community meetings at both sites were held 11 July. Three drop in sessions were held at Warracknabeal as well and detailed plans of proposed levees were on display. Feedback and comments from both sessions have lead to the following levee proposal (as attached).

Additional drop in sessions will be held in the Council Function Room 4pm – 5pm on Wednesday, 10 August and Wednesday, 24 August so residents can view levee maps and plans and give feedback.



<p>Warracknabeal Horsham</p>	<p>0 150 300 Metres</p> <p>GDA 1994 MGA Zone</p>	<p><b>Warracknabeal Levee Alignment</b></p> <p>Design Levee (2016)</p> <ul style="list-style-type: none"> <li><span style="display: inline-block; width: 15px; height: 10px; background-color: yellow; border: 1px solid black; margin-right: 5px;"></span> Levee</li> <li><span style="display: inline-block; width: 15px; height: 10px; background-color: orange; border: 1px solid black; margin-right: 5px;"></span> Temporary Levee</li> <li><span style="display: inline-block; width: 15px; height: 10px; background-color: green; border: 1px solid black; margin-right: 5px;"></span> Concrete wall</li> <li><span style="display: inline-block; width: 15px; height: 10px; background-color: red; border: 1px solid black; margin-right: 5px;"></span> Temporary Levee (access point)</li> <li><span style="display: inline-block; width: 15px; height: 10px; background-color: blue; border: 1px solid black; margin-right: 5px;"></span> Build Up Road-Levee</li> </ul> <ul style="list-style-type: none"> <li><span style="display: inline-block; width: 15px; height: 10px; background-color: lightblue; border: 1px solid black; margin-right: 5px;"></span> Rivers &amp; Streams</li> <li><span style="display: inline-block; width: 15px; height: 10px; background-color: grey; border: 1px solid black; margin-right: 5px;"></span> Highways</li> <li><span style="display: inline-block; width: 15px; height: 10px; background-color: lightgrey; border: 1px solid black; margin-right: 5px;"></span> Other Major Roads</li> <li><span style="display: inline-block; width: 15px; height: 10px; background-color: lightgrey; border: 1px solid black; margin-right: 5px;"></span> Minor Road Class 3+</li> </ul>	<p>12/07/2016 Sheet:1 of 1</p> <p>Wimmera CMA</p>
<p>This map is for information purposes only. Neither WCMA nor the State of Victoria claim or warrant that the information in this map is accurate, complete or up to date, and neither WCMA nor the State shall be responsible or liable in respect of any use of or reliance placed on it by any person. No part of this map may be reproduced, copied, transmitted or published in any form or by any means without the prior written permission of WCMA.</p>			

**Environment – Prepared by Geoff Harvey**

- Inspected Tarrant park in regard to trees and watering system after enquiry from the Warracknabeal Garden Club
- Attended final meeting of 'Lighting the Regions' street light replacement program
- Attended First Aid training
- Finalised accounts for Yarrilinks tree planting weekend
- Inspected trees in Beulah after enquiry re trimming
- Prepared project plan for Yarriambiack Shire Climate Change grant
- Responded to questions from residents re trees on nature strips

**Risk & Safety Report to Council – Prepared Barry Sullivan**

OHS Management Plan is currently under development for Community Funded Projects. Similar to a contract the plan will clearly show the safety requirement for a specific community project and will be filled out by the Principle Project Manager (*YSC reprehensive overseeing the project*) representative of the club or organisation and the Principle Contractor of the project. The Plan aligns to the OHS Act 2004, OHS Regulations 2007 and Worksafe Codes of Practice. The Plan will be signed off by the three parties prior to work commencing on the site.

Councils Risk Management Strategy is being reviewed with input for the management team and externally.

MAV Insurance Best Practice Forum will be held at Warracknabeal on 20 July with representatives from surrounding Councils, Municipal Association of Victoria (MAV) Melbourne staff and Yarriambiack Shire Council staff. The Forum will discuss the 2016 RIMS Conference and an insight to Global Risks. As well there will be a discussion on Road Management Act Cases.

A Targeted Risk Appraisal from the MAV will be reviewing Council's Contract Management System. The MAV have requested documentation from the Infrastructure Manager so they can compile their report.



**10.5 Capital Works Program 2015/2016 – Prepared by Chris Lehmann**

<b>Roads &amp; Streets – Urban Roads</b>				
<b><i>Project</i></b>	<b><i>% Completed</i></b>	<b><i>Start Date</i></b>	<b><i>Completion Date</i></b>	<b><i>Comments</i></b>
Brock Street Woomelang	90%	June 2016		Improve median strip with new tree and turning areas
Cemetery Road Warracknabeal	100%	February 2016	February 2016	Construct and seal 4 metres wide, 200 metres long from Anderson Street heading west (near Men's Shed)
Cook Street Woomelang	100%	April 2016	April 2016	Construct and seal 5.5 metres wide, Roberts Street to Church Street
Gould Street Warracknabeal	100%	February 2016	February 2016	Construct and seal 7 metres wide Cox Street to Allan Street
Long Street Warracknabeal	100%	February 2016	February 2016	Construct and seal 4 metres wide Dungey Street to Dally Street
Market Street Minyip	100%	March 2016	March 2016	Construct and seal shoulder 2.5 metres wide Foundry Street to McLeod Street
Mill Street Minyip	100%	July 2015	August 2015	Willmores
Roberts Street Woomelang	100%	April 2016	April 2016	Construct and seal 5.5 metres wide, Brock Street to Cook Street
Scott Street Warracknabeal	100%	February 2016	February 2016	Construct and seal 15 metres wide at Arnold Street intersection
Smith Street Warracknabeal	100%	February 2016	February 2016	Construct and seal 4 metres wide from Dungey Street
Taylor Street Warracknabeal	100%	January 2016	January 2016	Construct and seal 4 metres wide Anderson Street to Secondary College

<b>Roads &amp; Streets – Rural Roads</b>				
<b><i>Project</i></b>	<b><i>% Completed</i></b>	<b><i>Start Date</i></b>	<b><i>Completion Date</i></b>	<b><i>Comments</i></b>
Banyena Pimpinio Road R2R	100%	October 2015	December 2015	Reconstruct and widen seal to 6.6 metres, total distance 2.8 kms (2 jobs). Job starts at Murtoa Minyip Road heading east
Brim West Road R2R	100%	December 2015	December 2015	Reconstruct seal (4 metres), two sections, total distance 2.86 kms. Job between Fishers Road and Warracknabeal Rainbow Road
Dimboola Minyip Road	100%	March 2016	April 2016	Reconstruct seal to 6.6 metres, length 1.2 kms, works start at Barrat Quarry Road heading east
Gama Sea Lake Road R2R	100%	March 2016	April 2016	Reconstruct seal 4 metres, length 2 kms, section starts east of Lascelles North Road heading east
Longerenong Road	100%	February 2016	February 2016	Widen seal to 6.6 metres for 1.94 kms. Starting point 3 kms from Murtoa Glenorchy Road
Patchewollock Tempy Road R2R	100%	September 2015	November 2015	Construct 6.6 metre seal, length 1.5 kms, starts end of seal Patchewollock end
Sea Lake Lascelles Road R2R	100%	April 2016	May 2016	Reconstruct seal 6.6 metres, length 1.3 kms, starts at Shire boundary heading west



<b>Roads &amp; Streets – Rural Roads (continued)</b>				
<b><i>Project</i></b>	<b><i>% Completed</i></b>	<b><i>Start Date</i></b>	<b><i>Completion Date</i></b>	<b><i>Comments</i></b>
Watchem Warracknabeal Road R2R	100%	September 2015	October 2015	Reconstruct seal to 5.5 metres, length 1.6 kms. Starting 400 metres east of Rupanyup Road and going east
Sheep Hills Bangerang Road R2R	100%	January 2016	February 2016	Construct 4 metre seal, 1.4 kms long, starting end of seal heading north

<b>Gravel Shoulders</b>				
<b><i>Project</i></b>	<b><i>% Completed</i></b>	<b><i>Start Date</i></b>	<b><i>Completion Date</i></b>	<b><i>Comments</i></b>
Banyena Pimpinio Road	100%	May 2016	May 2016	Construct 2 metre wide sandstone shoulder both sides of seal. 2 sections, total length 2.7 kms
Brim West Road R2R	100%	March 2016	March 2016	Construct 2 metre wide sandstone shoulder both sides of seal, 3.4 kms long (either side of Hood Lane)
Dimboola Minyip Road	100%	April 2016	May 2016	Construct 2 metre wide sandstone shoulder both sides of seal, 1 km long
Hopetoun Yaapect Road	100%	December 2015	January 2016	Construct 2 metre wide limestone shoulder both sides of seal, 3.2 kms in length (either side of Websters Road)
Minyip Dimboola Road	100%	April 2016	April 2016	Construct 2 metre wide sandstone shoulder both sides, 500 metres in length
Minyip Rich Avon Road	100%	May 2016	May 2016	Construct 2 metre wide sandstone shoulder both sides of seal, 1.6 kms in length

<b>Gravel Shoulders (continued)</b>				
<b><i>Project</i></b>	<b><i>% Completed</i></b>	<b><i>Start Date</i></b>	<b><i>Completion Date</i></b>	<b><i>Comments</i></b>
Rosebery Rainbow Road	100%	June 2016	June 2016	Construct 2 metre wide limestone shoulder both sides of seal, 1 km in length (near Kemp's Road)
Rupanyup Road R2R	100%	November 2015	March 2016	Construct 2 metre wide sandstone shoulder both sides of seal. 2 sections, total length 8.5 kms
Sea Lake Lascelles Road R2R	100%	April 2016	April 2016	Construct 2 metre wide limestone shoulder both sides of seal, 1 km in length (east of Maxwell's Road)
Sheep Hills Bangerang Road R2R	100%	February 2016	February 2016	Construct 2 metre wide sandstone shoulder both side of seal, 2.1 kms in length
Wyperfeld Park Road	100%	May 2016	May 2016	Construct 2 metre wide limestone shoulder both sides of seal, 1.5 kms in length (south of Mitchell's Road)
Yaapeet Kenmare Road	100%	May 2016	May 2016	Construct 2 metre wide limestone shoulder both sides of seal, 1.6 kms in length (south of Hopetoun Rainbow Road)



<b>Gravel Re-Sheets</b>				
<b><i>Project</i></b>	<b><i>% Completed</i></b>	<b><i>Start Date</i></b>	<b><i>Completion Date</i></b>	<b><i>Comments</i></b>
3LK Road	100%	May 2016	May 2016	Construct 4 metre wide road, 510 metres in length using Great Western Gravel
A Matthews Road	100%	October 2015	October 2015	Construct 5 metre wide road, 920 metres in length using St Arnaud Gravel
Ailsa Road	100%	October 2015	October 2015	Construct 5 metre wide sandstone road, 1.29 kms in length
Ailsa Wheat Road	100%	November 2015	November 2015	Construct 4 metre wide sandstone road, 1.17 kms in length
Antwerp Road	100%	June 2016	June 2016	Construct 4 metre wide sandstone road, 440 metres in length
Areegra Exchange	100%	August 2015	August 2015	St Arnaud Gravel
Averys Road	100%	August 2015	August 2015	Hewitts Pit Sandstone
Bangerang Hall Road	100%	July 2015	July 2015	Hewitts Pit Sandstone
Boolite Donald Road	100%	February 2016	February 2016	Construct 5 metre wide road using St Arnaud Gravel
Boundary Road 2	100%	June 2016	June 2016	Construct 5 metre wide limestone road, 2.26 kms in length
C Readings Road	100%	May 2016	May 2016	Construct 4 metre wide road, 1 km in length using Great Western Gravel
Cannum 5 Chain Road	100%	June 2016	June 2016	Construct 5 metre wide sandstone road, 2.5 kms in length
Clyne Road	100%	June 2016	June 2016	Construct 4 metre wide sandstone road, 1.5 kms in length
Dogwood Road	100%	June 2016	June 2016	Construct 4 metre wide sandstone road, 1.8 kms in length

## YARRIAMIACK SHIRE COUNCIL

COUNCIL MEETING

MINUTES

27 July 2016

<b>Gravel Re-Sheets (continued)</b>				
<b><i>Project</i></b>	<b><i>% Completed</i></b>	<b><i>Start Date</i></b>	<b><i>Completion Date</i></b>	<b><i>Comments</i></b>
Echunga Road	100%	February 2016	February 2016	Construct 4 metre wide limestone road, 970 metres in length
Feerys Road	100%	February 2016	February 2016	Construct 4 metre wide sandstone road, 810 metres in length
Gama South Road	100%	May 2016	May 2016	Construct 4 metre wide limestone road, 960 metres in length
Goslings Road	100%	July 2015	July 2015	Eys Pit Limestone
Guleys Road	100%	May 2016	May 2016	Construct 4 metre wide limestone road, 1 km in length
Hoffmans Road	100%	August 2015	August 2015	Murphys Pit Sandstone
Hollands Road	100%	August 2015	August 2015	Hewitts Pit Sandstone
Holtkamps Road	100%	July 2015	July 2015	Chapmans Pit Sandstone
Jollys Road	100%	April 2016	April 2016	Construct 4 metre wide limestone road, 1.5 kms in length
Lah Angle Road R2R	100%	August 2015	August 2015	Hewitts Pit Sandstone
Lascelles North Road R2R	100%	September 2015	September 2015	Construct 4 metre wide limestone road, 4.4 kms in length R2R funding
Lawler Carron Road	100%	July 2015	July 2015	Construct 4 metre wide road using St Arnaud Gravel
McIntyres Road	100%	May 2016	May 2016	Construct 4 metre wide road, 600 metres in length using Great Western Gravel
Mellis Road R2R	100%	January 2016	January 2016	Construct 4 metre wide road, 2.3 kms in length using St Arnaud Gravel
Moloneys Road	100%	June 2016	June 2016	Construct 4 metre wide sandstone road, 2.6 kms in length

<b>Gravel Re-Sheets (continued)</b>				
<b><i>Project</i></b>	<b><i>% Completed</i></b>	<b><i>Start Date</i></b>	<b><i>Completion Date</i></b>	<b><i>Comments</i></b>
Murtoa Cemetery Road	100%	July 2015	July 2015	Chapmans Pit Sandstone
Olnays Road	100%	May 2016	May 2016	Construct 4 metre wide road, 460 metres in length using St Arnaud Gravel
Patchewollock Tip Road	100%	October 2015	November 2015	Construct 4 metre wide limestone road, 380 metres in length
Pullens Road	100%	June 2016	June 2016	Construct 4 metre wide sandstone road, 1.6 kms in length
Ratray Road	100%	August 2015	August 2015	Hewitts Pit Sandstone
Rosebery Rainbow Road	100%	May 2016	May 2016	Construct 4 metre wide limestone road, 500 metres in length
Thompsons Road	100%	August 2015	August 2015	St Arnaud Gravel
Turrieff West Road	100%	June 2016	June 2016	Construct 5 metre wide limestone road, 1.9 kms in length
V Schultzs Road	100%	January 2016	January 2016	Construct 4 metre wide sandstone road, 760 metres in length
Wallup Hall Road	100%	June 2016	June 2016	Construct 4 metre wide sandstone road, 2.7 kms in length
Wardles Road West	100%	August 2015	August 2015	Murphys Pit Sandstone
Wathe Reserve Road	100%	April 2016	April 2016	Construct 4 metre wide limestone road, 860 metres in length
Woods Road	100%	May 2016	May 2016	Construct 4 metre wide road using St Arnaud Gravel

<b>Gravel Re-Sheets (continued)</b>				
<b>Project</b>	<b>% Completed</b>	<b>Start Date</b>	<b>Completion Date</b>	<b>Comments</b>
Woollards Road	100%	October 2015	October 2015	Construct 4 metre wide limestone road, 1.8 kms in length
Yaapeet South Road	100%	January 2016	January 2016	Construct 5 metre wide limestone road, 2.5 kms in length
Yarto Speed Road	100%	June 2016	June 2016	Construct 4 metre limestone road, 3.2 kms in length

<b>Footpaths</b>				
<b>Project</b>	<b>% Completed</b>	<b>Start Date</b>	<b>Completion Date</b>	<b>Comments</b> <i>Works part of contract</i>
Beggs Street Warracknabeal	100%	June 2016	June 2016	Section 1 - Construct 1.5 metre concrete footpath starting at O'Brien Street towards King Street (107 metres) Section 2 - Werrigar Street to O'Brien Street (72 metres)
Craig Avenue Warracknabeal	100%	June 2016	June 2016	Construct 1.5 metre concrete footpath starting at 80 Craig Avenue to Kokoda Avenue (137 metres)
Lyle Street Warracknabeal	100%	June 2016	June 2016	Construct 1.5 metre concrete footpath Molyneaux Street to Devereux Street (108 metres)
Lascalles Street Hopetoun	100%	March 2016	April 2016	Construct 1.5 metre concrete footpath from Police Station to Strachan Street (79 metres)

YARRIAMBIACK SHIRE COUNCIL

COUNCIL MEETING

MINUTES

27 July 2016

<b>Footpaths</b>				
<b>Project</b>	<b>% Completed</b>	<b>Start Date</b>	<b>Completion Date</b>	<b>Comments</b> <i>Works part of contract</i>
Cromie Street Rupanyup	100%	May 2016	May 2016	Construct 1.5 metre footpath from Woods Street going north (110 metres long)
Main Street Minyip	100%	April 2016	April 2016	Construct 1.5 metre footpath from 139 Main Street to Walking Track (53 metres)
Phillips Street Warracknabeal	100%	May 2016	June 2016	Construct 1.5 metre concrete footpath on south side of Wheatlands Warehouse (32 metres)
Strachan Street Hopetoun	100%	March 2016	March 2016	Construct 1.5 metre concrete footpath from Toole Street to gate at Recreation Reserve (115 metres)
Hewitt/Bell Streets Warracknabeal	100%	June 2016	June 2016	Pedestrian Crossing
Scott/Bell Streets Warracknabeal	100%	June 2016	June 2016	Pedestrian Crossing
Scott/Milbourne Streets Warracknabeal	100%	June 2016	June 2016	Pedestrian Crossing

<b>Kerb &amp; Channel</b>				
<b><i>Project</i></b>	<b><i>% Completed</i></b>	<b><i>Start Date</i></b>	<b><i>Completion Date</i></b>	<b><i>Comments</i></b> <i>Works part of Contract</i>
Cromie Street Murtoa	100%	March 2016	April 2016	Renew kerb and 4 metre sealed road (Marma to Breen Street)
Dennys Street Hopetoun	100%	August 2015	September 2015	Willmores
McLeod Street Minyip	100%	May 2016	May 2016	Renew and add new kerb and seal to new kerb (Main to Market Street)
Stewart Street Rupanyup	100%	September 2015	February 2016	Renew kerb and underground drainage and seal up to new kerb

<b>Bridges &amp; Culverts and Drainage</b>				
<b><i>Project</i></b>	<b><i>% Completed</i></b>	<b><i>Start Date</i></b>	<b><i>Completion Date</i></b>	<b><i>Comments</i></b>
Lloyd/Munro Streets Murtoa	100%	March 2016	June 2016	

**10.6 Community Services Report – Prepared by Gavin Blinman****Kindergartens - Pedagogical Leader's Report – Prepared by Glenda Hewitt**

The Early Childhood Arena has indeed been undergoing considerable scrutiny from Government in both the Federal and State arena recently, with the outcome being significant new directions and policy being developed and rolled out for implementation. Of particular importance has been the creation of the 'Child Safe Standards' which sets stringent standards for children's safety. The consequent implication for early childhood services has been the necessity to embed these Standards in many already developed policies of the organisation, as well as, ensures that the Cluster has a specific policy which relates directly to Child Safety.

As with other teaching professionals Early Childhood Educators are mandated to report any disclosure, report or suspicions of child abuse of any kind and if this does not occur Educators could face up to a three year prison sentence.

Much training about mandatory reporting is being offered by the Department of Health and Human Services and I will be attending a training session on August 26 in Ballarat so that I can then share requirements with Staff in our Cluster.

Policies related to Compliment and Complaint management, have also been highlighted for review by the Department and in response to this, I have been revisiting the Yarriambiack Kindergarten Policy. The current set of Procedures for complaints, that were derived from the Regulations are no longer adequate and thus changes have been made to address new requirements.

The WORDS/Linking Learning Project in Warracknabeal continues to look at new initiatives to bring Literacy learning to the forefront in the Early Years. Several new initiatives continue to emerge such as a 'Shake, Rattle and Read' Program at the Primary school and an idea to extend the current children's Centre building to include a Playgroup space and consultation rooms, appears to be gathering momentum. Whilst I fully support these initiatives and the commitment of many people in the Warracknabeal Community, I remain concerned that the more vulnerable families in our Community are still not engaging with these initiatives and thus the objectives of the Linking Learning Project are not being achieved.

This week I will meet with Dr Jane Farmer, who is conducting research related to inclusion and community engagement through Rural Northwest Health. Jane's research will be active and so her work has the potential to develop new understanding of what can be done to support families and enhance engagement in a range of services.

**Environmental Health/ Local Laws – Prepared by Tim Rose, Greg Wilson**

Food premises inspections have remained ongoing through July, with no major breaches being identified. Council received one complaint over this period for food being sold past its best before date. That sale of food past a best before (as opposed to use-by) is not an offence under the Food Standards Code. However, Council spoke with the proprietor and advised of the risks associated with selling food past manufactures recommendations. The proprietor cooperated with Council, admitted a mistake had been made and decided that they would speak with the complainants themselves to offer their apology.

Commercially bottled water was obtained for sampling over this period to ensure compliance with the Australian Drinking Water Guidelines. Council is currently awaiting the laboratory results.

Matters relating to owners failing to comply with their onsite wastewater permit conditions have been investigated and completed. The owners in question have corrected the areas that were of concern to Council. Due to cooperation of those involved, no infringements were required to be issued.

Council is currently working with a property owner in the south of the Shire, where concerns have been raised over living conditions of animal numbers. Council is liaising with a number of key stakeholders regarding this matter and looking forward to a meeting with all concerns to discuss the best course of action for all involved.

There has only been a couple of dog wandering issues and one possible dog killing chooks complaint, unfortunately this was unable to be substantiated. The dog in question has not been able to be caught or yet come home to its owners.

Cats have been quiet also, with only three cats handed in; the snap of cold weather may have something to do with this.

The cat hoarding issue in Lubeck is a work in progress and will take resources and time from across departments.

There has been several unsightly land notices issued for rubbish and weeds as high as the fence some have complied and some have not.

We have now completed the unregistered animals list and will commence door knocking next week. There is a little over 200 people to go.

We have now appointed a new relief ranger Shane Dwyer; he has had recent experience in local laws with both Horsham and Hindmarsh Shires and will be a good asset to Council.

Livingston Street issue has been fixed with notice to comply issued, with one party to prevent any future problems.



### **Aged and Disability – Prepared by Lisa Dunkley**

The month of June has been busy with setting up for MY AGED CARE and the changes to Home and Community Care (HACC). Services for people with a disability, their families and carers who are aged 65 and over (or 50 and over for Aboriginal people) will change the name, from HACC to Commonwealth Home Support Program and will be funded and managed by the Commonwealth Government.

From the first of July CHSP will commence in Victoria providing support for frail older people living in the community to maximise their independence. The CHSP will replace the HACC program in Victoria and will fund a range of services currently provided by HACC.

Services for younger people under the age 65 will be funded and managed by the Victorian Government, with some services and clients transferring to the National Disability Insurance Scheme (NDIS) as it is rolled out in Victoria. NDIS STARTS HERE October 2017.

We held our Memory Strategies Group meetings in Hopetoun and Minyip with guest speaker Cr Kylie Zanker.

Attendance in both these meetings was very pleasing and they look forward to the next meetings which will be held in September, and looking on going on a bus trip.

With the Seniors concert coming up, we held our annual Seniors Forum with everyone turning up except for Rupanyup and Patchewollock to discuss any issues or concerns they may have.

### **Volunteer Meals and Transport – Prepared by Alannah Milne**

#### **Transport**

For the month of June 2016 the Yarriambiack Shire completed 9 drives and had 1 cancellation. This month elderly were mainly accessing services in Horsham.

The table below is a comparison over the last two years.

<b>June 2016</b>	9 drives, 1 cancellations
June 2015	18 drives, 5 cancellations

#### **Meals on Wheels**

<b>June 2016</b>	860 Meals
June 2015	1,226 Meals

**Assessment Officer Report May 2016 – Prepared by Bronwen Clayton**

Referrals received for living at home assessments (total 6):

- 1 directly from client or family
- 1 from WWHS Occupational Therapy
- 1 from ACAS (Aged Care Assessment Team)
- 3 from My Aged Care

Referrals sent as outcome of home assessments (0):

As from 1 July, Commonwealth Home Support Programme:

- We are now known as Home Support Assessors
- Any new clients 65+ (50+ for aboriginal/Torres Strait Islander) who come to the front counter or call YSC seeking a service are required to contact My Aged Care and create a client record and MAC will refer for an assessment or service provision
- We are now required to do all our new client assessments on My Aged Care – involves 48 pages of questions to work through with the client (can be done face to face with the lap top or face to face and then input information onto computer back at the office – will depend on individual situation and internet availability). This also includes creating an individual client support plan and making any required referrals, including to YSC for service provision (Assessment is separate to service provision).
- We will continue to do our YSC service specific care plans and reviews for current clients.
- There is still a lot of learning to be done, including how best to work with MAC and HACC PAC systems (information is not shared between the 2 systems) and we are working towards changing logos on our paperwork

NB: Process for clients under 65yrs remains unchanged

**Maternal and Child Health (MCH) – Prepared by Nanette Freckleton and Michelle Schilling**

- Birth notifications are at 71 and 85 enrolments are for the YTD. New Financial year begins new tally
- Patche/Tempy new mothers are meeting once a month with MCHN after usual playgroup session. New Mothers group continues in Hopetoun with interest from these mothers to recommence Hopetoun playgroup sessions. Hopetoun Playgroup session scheduled for Wednesday
- Immunisation sessions continue on a monthly basis. We have had to complete a number of immunisations for those between 6-16years for catch ups
- 30 families registered at Linking Learning launch, was a successful Launch
- MCHN Regional meeting to be attended this month

**Youth Report – Prepared by Murray McKenzie**

- Gaming Nights have been running again in the Shire, terrific support from the new local Business Kaos Games who have sponsored events
- FReeZA money is going to be spent on the Battle of the Bands event in Murtoa on 19 August 2016 with young Band Sisters Doll to headline the night (they finished 5<sup>th</sup> on Australia's Got Talent). They will also do some school sessions for us during the week they are here
- The Yarriambiack Youth Action Council had a Horse riding bonding day at Brimpaen to solidify the working relationships of the group and do some planning for upcoming events
- Two Youth action councillors attended the FReeZA push Day in Bendigo with myself on 5 July and as a result will assist with coordination a FReeZA Facebook Page
- Attended the LONGY Careers Expo in partnership with Nexus Horsham (over 2500 students in attendance-to get the word out about the Battle of Bands and fly the flag for our Shire as an active region for youth activities

**SHARE Program 'Sustainable Healthy Adaptable Resilient Engaged' – Prepared by Marianne Ferguson****Hopetoun Community Meeting**

A community meeting was held at Gateway BEET on Tuesday, 11 July to discuss the Hopetoun Community Action Plan and the formation of a new Progress Association. The meeting was well attended with 18 representatives from across the community.

**Silo Art Trail**

Preparations for the Silo Art Trail are underway with the application to the Drought Community Program being submitted. Melbourne based street art company Juddy Roller is coordinating the artists who will install murals at Rupanyup, Sheep Hills, Rosebery, Yaapect, and Patchewollock.

**Small Business Victoria Workshops**

Build Your Business Beyond Drought - Small Business Resilience Workshops are currently being organised to be held in Murtoa, Warracknabeal and Hopetoun during August. The workshops will be two hour sessions for businesses at no cost.

**Wimmera Mallee Tourism**

Wimmera Mallee Tourism is continuing to work on the Strategic and Marketing Plan. The Monthly Photo and Video Competition are currently under review.

**Woomelang Cronomby Tanks**

Works are scheduled to begin at Cronomby Tanks during August including tree planting, weed removal and the installation of bollards. Funding for the works was gained from the Catchment Management Authority. Wimmera Uniting Care has provided \$1,000 funding towards the 'Tough as Iron' project that will see corrugated iron artwork installed at Cronomby Tanks. Further funding for the project will be required.

**Yarriambiack Tourism**

The next Yarriambiack Tourism Meeting will be held on Monday, 29 August in Hopetoun. The Yarriambiack Tourism Facebook Page currently has 1,325 'Likes'. The Warracknabeal Arts Council is currently developing a Nick Cave brochure. An Events Calendar is currently being drafted. The Op Shop Tour has been reprinted.

**10.7 Infrastructure Services Report – Prepared by Bernie Naylor****Murtoa Swimming Pool Change rooms Upgrade**

Met with the Murtoa Swimming Pool Committee on 28 June 2016 and also Rohan Fry from I-Design to discuss the proposed Change Rooms upgrade project.

Draft plans will now be developed together with projected costings for the project.

Council will make application through the Community Sports Infrastructure fund in the 2018/2019 program.

It is anticipated the project will cost around \$400k.

Through the funding program a maximum grant of \$200k is available with the balance of the project being funded through the Drought Funding allocation, community funding and Council.

**Contract C206/2016 – Win, Raise, Crush and Stockpile Gravel**

Council in the carrying out of its works will need to supplement its own plant by resourcing Gravel Crushing Services.

Therefore, Council is inviting tenders from Contractors who are able to provide suitable machines to undertake the Winning, Raising, Crushing and Stockpiling of gravel.

Tenders close on Monday, 8 August 2016.

Generally Council crushes around 150,000 tonnes per annum.

**Flood Levees – Warracknabeal**

Council together with the Wimmera Catchment Management Authority (CMA) conducted community Flood Levee meetings in Brim and Warracknabeal on Monday, 11 July 2016.

The meeting in Warracknabeal was very well attended by the public.

The levee designs and heights were presented to the community together with information on Council's stormwater system and creek valves.

The meeting was very positive towards the proposed levees, with some issues raised to be followed up by Council and the CMA.

Council would like all comments following this meeting forwarded to staff by 31 July 2016.

Once the final designs have been completed following this consultation process, the CMA will seek funding for the project.

### **Scrap Metal Collection Contract**

The Grampians Central West waste and resources Group have called for tenders to collect scrap metal from transfer stations located in the following Municipalities:-

Northern Grampians, Ararat, Horsham, Yarriambiack, West Wimmera, Hindmarsh and Golden Plains.

Tenders for this contract close on 10 June 2016.

The collection of Scrap metal contract has been awarded to SIMS Metal.

### **Waste and Recycling Services**

#### **2015/2016 – Kerbside Waste and Recycling Collection Service Data**

##### **Waste**

Number of Bin Lifts	187,196
Waste Bins	3,532
Tonnes Collected	1,768
Collection Cost	\$325,571
Disposal Costs	\$192,436

The kerbside waste collection service is undertaken weekly.

##### **Recycling**

Number of Bin Lifts	76,032
Waste Bins	2,816
Tonnes Collected	595
Collection Cost	\$323,754

The kerbside recycling collection service is undertaken fortnightly, with the collection cost including the disposal of the recyclables material.

##### **Transfer Stations**

The overall net cost to Council to operate the 10 Transfer Stations is \$395,000.

##### **Summary of Costs**

Total Expenditure including kerbside Collections, Transfer Stations, DrumMuster and Capital works.	\$1,390,000
Total Income including Rates and Charges	<u>\$1,120,000</u>
<b>Net Cost</b>	<b>\$ 270,000</b>

**Asset Engineer – Mick Evans**

- Ongoing works on the development of the Capital Works Program
- Ongoing setting up and implementing the GIS shared services data and the associated website. The website will be live to the public by the first week of August. Attend training for the user and the administrator for the website.
- Due to unforeseen circumstances with some of the weather station equipment not meeting the requirements of the Bureau of Meteorology (BoM), Council has had to apply for an extension for the Warracknabeal Aerodrome Lighting project and the possibility of the Hopetoun Aerodrome as well
- Carried out a footpath inspection with the Design Engineer
- Developed a renewal report for the Wheatlands Museum road and car parking area
- Discussion with the Cowan family re Wrights Road / Leith's Road
- Prepared documentation for the Murtoa community meeting - Garbage & Recycling mapping, gravel pits and gravel zone mapping
- Attended an Aerodrome Patient Transfers Station meeting re draft building upgrade project plans
- Completed a CPR / First Aid update
- Prepared flood study session documentation, flood mapping and assisted in the development of the creek valve mapping
- Organised the Road Management Inspection regime for Council's Road Inspector

**OH&S and Risk Management**

- Ongoing discussions with Council's IT Consultant in how to implement the newly developed Risk Register

**Emergency Management**

- Attended a Regional Emergency Management Collaboration meeting in Charlton
- Attend job interviews for a new Wimmera Emergency Management Project officer and a Wimmera Emergency Management administration Officer for the 4 Councils in the cluster program, based at Horsham
- Develop Councils report for the Municipal Emergency Management Planning Committee (MEMPC) meeting

**Design Engineer – Joel Turner**

- Open drain in Stewart Street Rupanyup completed and working well
- Footpath contract work complete
- Capital Works survey work has commenced

**OH&S Officer – Prepared by Bob Taylor**

- Plant Assessor: Currently doing risk management surveys on plant and have commenced on trucks; this will be ongoing for months
- Looking at training for 'Driver Fatigue' for plant/truck operators
- Currently conducting Audits on the works depots over the next two months
- Currently creating 10 Traffic Management Plans for rehabilitation jobs

**Technical Officer – Prepared by Nathan McLean**

- Organised traffic counter installation and locations, downloaded data and save report for future works
- Completed a monthly progress report for the Bridges Renewal Programme, funding we received for the upgrading of the Dunmunkle creek culverts
- Researching archive files and relevant information to present to Council after receiving correspondence to rename Fryatts Road back to Porkers Road
- Followed up on Stronger Communities Programme (SCP) grant for the Warracknabeal Aerodrome Ambulance Transfer Station project
- Mapping and spreadsheet for proposed locations of a weather radar in the areas of Minyip to Brim on Crown or Council land only
- Attended a two day First Aid course
- Mapping of locations of creek valves, stormwater pits and pipes for the community flood meetings
- Completed a public application form and mapping for motorsport activity users who wish to use the Warracknabeal Aerodrome
- Worked with the Design Engineer to liaise with contractors on the 2015/16 Footpath Capital Works Program



**Technical Officer – Tony Brennan**

- On Annual leave from 10 June – 4 July
- Rupanyup kindergarten (weather permitting) will be connected to the new sewerage system in the next fortnight. Some reinstatement still to take place when conditions allow
- Processed various stormwater discharge point applications as required
- Carried out Road Management Act inspections and report on sealing area required for works carried out by GWMWater
- Inspected 'Dial Before You Dig' enquiries to see if any Road Reserve Works Permits or Asset Protection Permits are required
- Lodged a NOTAM (Notice to Airman) for Warracknabeal Aerodrome for Performance Driving Australia to use for training 18 July 2016
- Carried out higher duties for Bernie Naylor while on leave (25 July to 15 August)

**Warracknabeal Regional Livestock Exchange**

- Sale held 22<sup>nd</sup> June ..... 6,185 head

**Total for 2015/16 Financial Year.... 113,714 head**

- Sale held 6<sup>th</sup> July ..... 5,006 head
- Prepare for National Saleyards Quality Assurance Audit on 20 July 2016
- Yards surrounding both drafting races to be resurfaced when weather permits as current surface is boggy and causing issues for all users

**Caravan Park Occupancy June 2016**

State	Warracknabeal	Hopetoun	Murtoa
<b>VIC</b>	130	50	38
<b>NSW</b>	8	2	5
<b>WA</b>	1	0	4
<b>QLD</b>	0	2	2
<b>SA</b>	18	2	6
<b>NT</b>	0	2	0
<b>ACT</b>	0	0	0
<b>TAS</b>	3	0	2
<b>International</b>	0	0	0
<b>Permanents</b>	(17 x 3) = 51 (13 x 3) = 39	(31 x 0) = 0	(30 x 3) = 90
<b>Monthly Occupancy</b>	<b>233</b>	<b>58</b>	<b>147</b>

## **10.8 Community Projects Report – Prepared by Dennis Smith**

### **Country Football and Netball Program 2013/2014 and Putting Locals First Program**

A meeting will be arranged with the builder to discuss outstanding minor works to be completed for the Hopetoun Community Centre project.

### **Country Football and Netball Program 2014/2015**

There are several minor works to be completed for the Minyip Football and Netball Facilities Upgrades project and have been discussed with the builder.

### **Country Football and Netball Program 2015/2016**

An application for funding to construct a new netball/female change-room, incorporating showers, toilets and washbasins at Anzac Park has been approved with a grant of \$100,000 for a total project cost of \$153,970.

The Warrack Eagles Football Netball Club has been successful in obtaining a \$20,000 grant through the AFL's Female Friendly Facilities program. This has allowed an extension to be built, which will be a dedicated female umpires' change-room. A project variation request has been submitted to SRV for this additional work.

### **Community Facility Funding Program 2015/2016 – Planning**

Grant acquittal documentation for the Sport & Recreation Strategy 2016-2025 has been prepared and submitted.

### **Community Sports Infrastructure Fund 2016/2017 – Minor Facilities**

A combined application for improved lighting at the Brim Memorial Bowling Club and new in-ground, fully automated, sprinkler system for the Brim Recreation Reserve has been approved under this program, with a grant of \$85,200 for a total project cost of \$127,813.

Planning has commenced and on-ground works are anticipated to commence at the end of July.

### **Community Sports Infrastructure Fund 2017/2018 – Minor Facilities**

A Project Proposal has been submitted to install a fully automated sprinkler system to all fairways at the Warracknabeal Golf Club. The Proposal requests a grant of \$100,000 for a total project cost of \$298,000 (this will also include \$100,000 from the Drought Relief Program).

### **Regional Jobs and Infrastructure Fund**

Two projects have been approved under this program.

The first project is the construction of five walking tracks across the Shire with a grant of \$112,200 for a total project cost of \$146,200. The tracks are located in Murtoa; two in Minyip, Woomelang and Yaapeet. Rabl Park (Murtoa) and the two tracks in Minyip are completed. The Woomelang track is almost completed and the Yaapeet track is underway.

The second project is streetscape works in Brim and Minyip with a grant of \$130,500 for a total project cost of \$174,000. Both the Brim and Minyip sculptures are underway and work at the Minyip Traveller's Rest has commenced.

Timing for the above works is completion in December this year.

### **Community Shade Grants Program**

The installation of the shade structure over the playground at Redda's Park, Brim, has been completed and the Shade Protection Policy (as required in the grant documentation) has been developed. When the acquittal Final Report form is made available it will be completed and submitted.

### **Transport Investing in Regions Initiative**

A grant of \$15,000 has been received under this program for works at the Patchewollock railway precinct. Work will include construction of a walking track, re-surfacing the car park and installation of interpretive signage.

We are awaiting lease arrangements from VicTrack for the walking track area.

### **Other Work Undertaken**

The application submitted under the Better Fishing Fund to install a pontoon at the Brim Weir Pool has been partially successful with funding of \$12,520 (20% of the grant requested) offered. An application for the balance of the project cost will be prepared and submitted to the Drought Relief Program.

Drought Relief Program projects – I have met with Committee members from Sheep Hills Hall, Tempy Recreation Reserve, Brim and Minyip regarding information required for application lodgment.

## **11 REPORTS FOR DECISION**

### **11.1 Finance Report – Prepared by Anita McFarlane**

#### **Recommendation**

The Finance Report as at June 2016 be received.

**Moved Cr K Zanker seconded Cr L Woods that Finance Report as at June 2016 be received.**

**Carried**

### **11.2 Revenue Report – Prepared by Chantelle Pitt**

#### **Recommendation**

The Revenue Report as at July 2016 be received.

**Moved Cr H Ballentine seconded Cr K Zanker that Revenue Report as at July 2016 be received.**

**Carried**

**11.3 Request for the Unused Road Reserve off Kewell North School Road be Discontinued – Prepared by Nathan McLean**

On 25 May Council moved that due process of the Geographic Name Guidelines be followed and advertised to the public that consideration be given to discontinue the Unused Road Reserve off Kewell North School Road (Map attached).

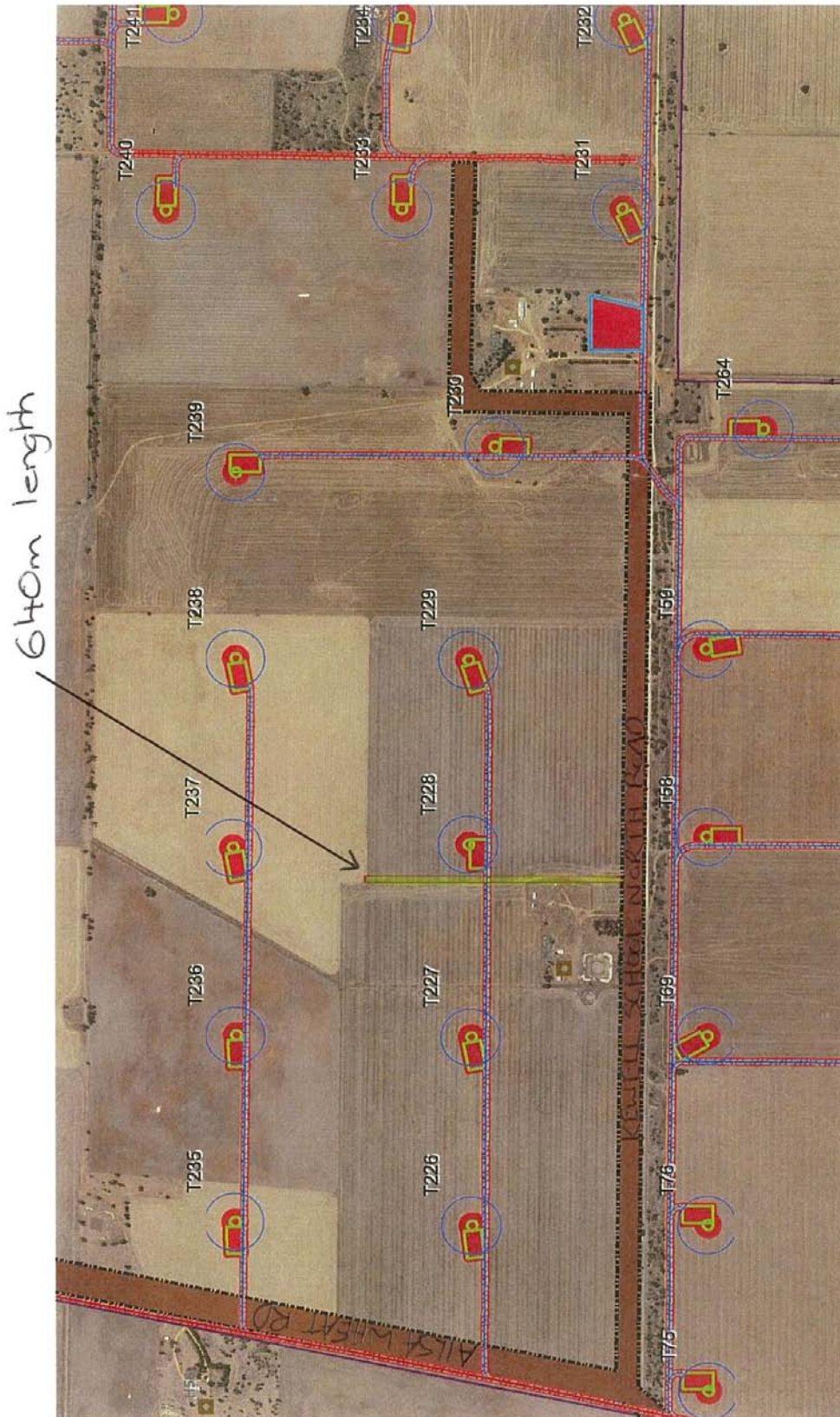
Council advertised in all relevant local papers and invited comments or objections from any interested parties as per the Geographic Names Guidelines and no comments or objections were received.

**Recommendation**

The recommendation is that Council adopt the discontinuance of the Unused Road Reserve off Kewell North School Road and continue due process with Geographic Names.

**Moved Cr A McLean seconded Cr G Massey that Council adopt the discontinuance of the Unused Road Reserve off Kewell North School Road and continue due process with Geographic Names.**

**Carried**



**12 GENERAL BUSINESS (including strategic direction and specific issues)**

**13 CLOSED SESSION**

**14 MINUTES FROM MEETINGS**

**15 ATTACHMENTS / REPORTS**

Planning Permit Activity Report for June 2016  
Rates Report – July 2016  
Income Statement by Resources for June 2016  
Income Statement by Department for June 2016  
Capital Expenditure for June 2016  
Balance Sheet as at 31 June 2016

**16 NEXT MEETING**

The next meeting of Council will be held on Wednesday, 24 August 2016 at 9:30am at Warracknabeal.

**17 CLOSE 10:37am**

\_\_\_\_\_ **Mayor**

**YARRIAMBIA SHIRE COUNCIL**  
**INCOME STATEMENT BY RESOURCES**  
**FOR JUNE 2016**

	2014/2015 Budget	2014/2015 Actuals	June Actuals	2015/2016 Budget	YTD Actuals	Forecast	YTD Variance	YTD % Variance
<b>Income</b>								
Asset Disposal & Fair Value Adjustments	\$ (400,000)	\$ (375,190)	\$ (16,324)	\$ (297,800)	\$ (348,592)	\$ (312,800)	\$ 50,792	(17%)
Contributions, Donations & Reimbursement	\$ (309,839)	\$ (264,320)	\$ (8,856)	\$ (235,911)	\$ (218,435)	\$ (232,805)	\$ (17,476)	7%
Government Grants & Charges	\$ (9,225,566)	\$ (11,155,366)	\$ (776,092)	\$ (8,870,887)	\$ (8,115,606)	\$ (8,075,745)	\$ (755,281)	9%
Interest Income	\$ (139,921)	\$ (138,836)	\$ (38,619)	\$ (107,021)	\$ (112,249)	\$ (111,358)	\$ 5,228	(5%)
Rates & Charges	\$ (10,594,460)	\$ (10,827,963)	\$ 68,996	\$ (11,314,254)	\$ (11,302,097)	\$ (11,322,086)	\$ (12,157)	0%
Sale Proceeds - Contra Sales	\$ -	\$ -	\$ -	\$ -	\$ (173)	\$ (173)	\$ 173	0%
User Charges, Fees & Fines	\$ (1,051,752)	\$ (1,163,322)	\$ (55,438)	\$ (1,028,072)	\$ (954,616)	\$ (1,102,601)	\$ (73,456)	7%
<b>Income Total</b>	<b>\$ (21,721,538)</b>	<b>\$ (23,924,996)</b>	<b>\$ (826,334)</b>	<b>\$ (21,853,945)</b>	<b>\$ (21,051,768)</b>	<b>\$ (21,157,568)</b>	<b>\$ (802,177)</b>	<b>4%</b>
<b>Expenditure</b>								
Asset Disposal & Fair Value Adjustments	\$ 300,412	\$ 944,791	\$ -	\$ 309,424	\$ -	\$ 309,424	\$ 309,424	0%
Bad & Doubtful Debts	\$ -	\$ 36,998	\$ -	\$ -	\$ -	\$ -	\$ -	0%
Contributions & Donations	\$ 892,342	\$ 851,753	\$ (15,000)	\$ 977,245	\$ 751,829	\$ 821,324	\$ 225,416	23%
Depreciation Amortisation & Impairment	\$ 6,251,313	\$ 6,568,314	\$ -	\$ 6,438,426	\$ 58	\$ 6,438,426	\$ 6,438,368	100%
Employee Costs	\$ 7,637,865	\$ 7,403,109	\$ 772,572	\$ 7,770,428	\$ 7,442,982	\$ 7,128,116	\$ 327,446	4%
Finance Costs	\$ 72,866	\$ 108,979	\$ 2,737	\$ 123,396	\$ 52,969	\$ 53,403	\$ 70,427	57%
Materials	\$ 5,215,260	\$ 4,955,062	\$ 170,912	\$ 4,633,460	\$ 4,590,217	\$ 4,600,921	\$ 43,243	1%
Other Expenses	\$ 1,357,868	\$ 1,333,339	\$ 77,870	\$ 1,299,629	\$ 1,246,770	\$ 1,259,489	\$ 52,859	4%
<b>Expenditure Total</b>	<b>\$ 21,727,926</b>	<b>\$ 22,202,345</b>	<b>\$ 1,009,090</b>	<b>\$ 21,552,008</b>	<b>\$ 14,084,824</b>	<b>\$ 20,611,103</b>	<b>\$ 7,467,184</b>	<b>35%</b>
<b>Total</b>	<b>\$ 6,388</b>	<b>\$ (1,722,651)</b>	<b>\$ 182,757</b>	<b>\$ (301,937)</b>	<b>\$ (6,966,944)</b>	<b>\$ (546,465)</b>	<b>\$ 6,665,007</b>	



# YARRIAMBIA SHIRE COUNCIL

## INCOME STATEMENT BY DEPARTMENT FOR JUNE 2016

	2014/2015 Budget	2014/2015 Actuals	June Actuals	2015/2016 Budget	YTD Actuals	Forecast	YTD Variance	YTD % Variance
<b>Income</b>								
Community Services	\$ (1,974,579)	\$ (2,215,881)	\$ (385,782)	\$ (1,863,121)	\$ (2,370,819)	\$ (2,350,597)	\$ 507,698	(27%)
Corporate Services	\$ (14,552,348)	\$ (17,406,375)	\$ 20,094	\$ (15,348,378)	\$ (12,898,251)	\$ (12,921,553)	\$ (2,450,127)	16%
Economic Development	\$ (988,531)	\$ (1,047,968)	\$ (99,288)	\$ (268,264)	\$ (584,921)	\$ (585,159)	\$ 316,657	(118%)
Engineering	\$ (2,725,221)	\$ (1,476,163)	\$ (73,224)	\$ (2,749,800)	\$ (3,304,287)	\$ (3,406,442)	\$ 554,487	(20%)
Recreation & Culture & Leisure	\$ (264,361)	\$ (486,460)	\$ (275,703)	\$ (360,970)	\$ (603,232)	\$ (570,895)	\$ 242,262	(67%)
Regulatory Services	\$ (157,739)	\$ (160,509)	\$ (8,845)	\$ (147,663)	\$ (196,837)	\$ (196,394)	\$ 49,174	0%
Waste & Environment	\$ (1,058,759)	\$ (1,131,638)	\$ (3,586)	\$ (1,115,749)	\$ (1,093,422)	\$ (1,126,528)	\$ (22,327)	2%
<b>Income Total</b>	<b>\$ (21,721,538)</b>	<b>\$ (23,924,996)</b>	<b>\$ (826,334)</b>	<b>\$ (21,853,945)</b>	<b>\$ (21,051,768)</b>	<b>\$ (21,157,568)</b>	<b>\$ (802,177)</b>	<b>4%</b>
<b>Expenditure</b>								
Community Services	\$ 2,750,681	\$ 2,653,577	\$ 218,952	\$ 2,784,790	\$ 2,600,922	\$ 2,750,747	\$ 183,868	7%
Corporate Services	\$ 1,928,109	\$ 1,652,233	\$ 125,420	\$ 1,971,414	\$ 1,498,282	\$ 1,636,135	\$ 473,132	0%
Economic Development	\$ 1,020,560	\$ 1,248,749	\$ 37,020	\$ 772,285	\$ 766,119	\$ 809,665	\$ 6,166	1%
Engineering	\$ 11,069,421	\$ 11,838,719	\$ 363,428	\$ 10,954,703	\$ 4,780,725	\$ 10,509,633	\$ 6,173,978	56%
Governance	\$ 1,012,911	\$ 865,027	\$ 47,193	\$ 1,080,027	\$ 911,406	\$ 903,481	\$ 168,621	16%
Recreation & Culture & Leisure	\$ 1,377,604	\$ 1,292,057	\$ 25,311	\$ 1,344,019	\$ 999,824	\$ 1,410,505	\$ 344,195	26%
Regulatory Services	\$ 663,416	\$ 663,719	\$ 59,879	\$ 662,004	\$ 580,807	\$ 588,624	\$ 81,197	12%
Waste & Environment	\$ 1,905,224	\$ 1,988,264	\$ 131,888	\$ 1,982,766	\$ 1,946,738	\$ 2,002,313	\$ 36,028	2%
<b>Expenditure Total</b>	<b>\$ 21,727,926</b>	<b>\$ 22,202,345</b>	<b>\$ 1,009,090</b>	<b>\$ 21,552,008</b>	<b>\$ 14,084,824</b>	<b>\$ 20,611,103</b>	<b>\$ 7,467,184</b>	<b>35%</b>
<b>Total</b>	<b>\$ 6,388</b>	<b>\$ (1,722,651)</b>	<b>\$ 182,757</b>	<b>\$ (301,937)</b>	<b>\$ (6,966,944)</b>	<b>\$ (546,465)</b>	<b>\$ 6,665,007</b>	

**YARRIAMBIACK SHIRE COUNCIL**  
**CAPITAL EXPENDITURE FOR JUNE 2016**

	2014/2015 Budget	2014/2015 Actuals	June Actuals	2015/2016 Budget	YTD Actuals	Forecast	YTD Variance	YTD % Variance
<b>01929 - Administration - Capital</b>								
0900 - Building Capital Works	\$ 5,000	\$ 17,910	0	30,000	28,021	28,021	1,979	7%
0910 - Furniture & Equipment Capital Works	\$ 2,000	\$ -	0	2,060	0	0	2,060	100%
<b>01939 - Asset Management - Capital</b>								
0920 - Computer / IT Capital Works	\$ -	\$ 6,528	0	39,500	37,065	77,065	2,435	6%
<b>01949 - Information Technology - Capital</b>								
0920 - Computer / IT Capital Works	\$ 20,000	\$ 6,258	0	20,000	1,636	1,636	18,364	92%
<b>02919 - HACC Administration - Capital</b>								
0910 - Furniture & Equipment Capital Works	\$ -	\$ 2,800	0	0	3,436	3,436	(3,436)	0%
<b>02929 - MECC - Capital</b>								
0910 - Furniture & Equipment Capital Works	\$ 2,228	\$ -	0	2,000	0	15,000	2,000	100%
<b>02939 - Senior Citizens - Capital</b>								
0900 - Building Capital Works	\$ 80,000	\$ 288	10,496	95,000	94,488	101,500	512	1%
<b>02949 - Environmental Health - Capital</b>								
0910 - Furniture & Equipment Capital Works			0	0	4,043	4,043	(4,043)	0%
<b>02959 - Animal Pound - Capital</b>								
0930 - Animal Pound - Capital Works	\$ -	\$ -	0	0	14	14	(14)	0%
<b>02969 - Maternal &amp; Child Health - Capital</b>								
0900 - Building Capital Works	\$ 20,000	\$ 70,732	0	6,556	11,987	11,988	(5,431)	(83%)
0920 - Computer / IT Capital Works	\$ 2,500	\$ -	0	6,500	0	0	6,500	100%
<b>02979 - Fire Hydrants - Capital</b>								
0965 - Fire Hydrants - Capital	\$ -	\$ -	0	4,000	0	0	4,000	100%
<b>02989 - Preschools - Capital</b>								
0900 - Building Capital Works	\$ 43,000	\$ 487	0	5,000	7,120	7,120	(2,120)	(42%)
<b>03909 - Industrial Estate - Capital</b>								
0905 - Industrial Estate Capital Works	\$ 35,000	\$ -	0	15,000	11,045	13,000	3,955	26%
<b>03919 - Caravan Parks - Capital</b>								
0900 - Building Capital Works	\$ 76,000	\$ 57,525	0	10,000	34,562	35,000	(24,562)	(246%)
0910 - Furniture & Equipment Capital Works	\$ 2,000	\$ -	0	2,000	0	2,000	2,000	100%
<b>03929 - Public Amenities - Capital</b>								
0900 - Building Capital Works	\$ 5,000	\$ -	9,700	70,000	77,848	65,000	(7,848)	(11%)
<b>04939 - Hall - Capital</b>								
0900 - Building Capital Works	\$ 48,000	\$ 48,459	0	50,000	2,588	2,588	47,412	95%
<b>05909 - Parks &amp; Playgrounds - Capital</b>								
0975 - Playground Capital Works	\$ 21,630	\$ 105,386	0	10,000	140,584	137,408	(130,584)	(1306%)
<b>05919 - Recreation Reserve - Capital</b>								
0900 - Building Capital Works	\$ -	\$ -	119,484	348,000	360,120	360,000	(12,120)	(3%)
<b>05939 - Swimming Pool - Capital</b>								
0900 - Building Capital Works	\$ 20,000	\$ -	0	20,000	0	10,000	20,000	100%
<b>05949 - Sporting Complex - Capital</b>								
0900 - Building Capital Works	\$ 5,000	\$ 37,330	0	5,000	0	5,000	5,000	100%
0910 - Furniture & Equipment Capital Works	\$ 4,000	\$ -	0	4,000	0	4,000	4,000	100%
<b>05959 - Gymnasium - Capital</b>								
0910 - Furniture & Equipment Capital Works	\$ 4,000	\$ -	0	0	0	0	0	0%
<b>06909 - Local Roads - Capital</b>								
0935 - Urban Road Construction	\$ 186,000	\$ 255,868	57	191,120	145,208	159,120	45,912	24%
0940 - Rural Road Construction	\$ 2,363,544	\$ 2,605,985	3,318	2,325,481	2,284,872	2,225,481	40,609	2%
0945 - Reseals	\$ 229,911	\$ 231,432	0	336,912	463,139	336,912	(126,227)	(37%)
0950 - Resheets	\$ 1,178,760	\$ 1,465,280	149,738	1,135,608	1,343,678	1,505,608	(208,070)	(18%)
0955 - Shoulder Resheets	\$ 378,721	\$ 489,651	29,055	376,840	946,241	736,840	(569,401)	(151%)
<b>06919 - Footpath - Capital</b>								
0980 - Footpath Construction	\$ 201,337	\$ 136,014	0	211,992	75,832	211,592	136,160	64%
<b>06929 - Bridge - Capital</b>								
0990 - Bridge Construction	\$ 32,726	\$ -	0	33,764	11,990	0	21,774	64%
<b>06939 - Kerb &amp; Channel - Capital</b>								
0985 - Kerb & Channel Construction	\$ 300,000	\$ 278,972	0	311,410	333,406	341,090	(21,996)	(7%)
<b>06959 - Aerodrome - Capital</b>								
0900 - Building Capital Works	\$ -	\$ 22,542	0	0	419,084	419,084	(419,084)	0%
0950 - Resheets	\$ 150,000	\$ 37,980	0	530,458	24,425	24,425	506,033	95%
<b>06979 - Depot - Capital</b>								
0900 - Building Capital Works	\$ 250,000	\$ 275,601	76	108,000	322,224	300,000	(214,224)	(198%)
<b>07909 - Drainage - Capital</b>								
0995 - Drainage Construction	\$ 33,297	\$ 50,478	0	35,000	0	20,000	35,000	100%
<b>07929 - Transfer Stations &amp; Landfills - Capital</b>								
0960 - Waste Site Capital Works	\$ 20,000	\$ 6,285	0	20,000	8,001	20,000	11,999	60%

**YARRIAMBIACK SHIRE COUNCIL**  
**CAPITAL EXPENDITURE FOR JUNE 2016**

	2014/2015 Budget	2014/2015 Actuals	June Actuals	2015/2016 Budget	YTD Actuals	Forecast	YTD Variance	YTD % Variance
<b>08909 - Livestock Exchange - Capital</b>								
0900 - Building Capital Works	\$ 10,300	\$ 29,717	0	5,000	0	0	5,000	100%
<b>69760 - Staff Vehicle Purchases</b>								
6800 - Plant Purchases	\$ 320,000	\$ 282,970	0	320,000	290,716	320,000	29,284	9%
<b>69860 - Works Plant Purchases</b>								
6800 - Plant Purchases	\$ 740,000	\$ 825,708	5,923	900,000	933,726	900,000	(33,726)	(4%)
<b>Total</b>	<b>\$ 6,789,954</b>	<b>\$ 7,348,186</b>	<b>\$ 327,846</b>	<b>\$ 7,586,201</b>	<b>\$ 8,417,099</b>	<b>\$ 8,403,971</b>	<b>\$ (830,898)</b>	<b>(11%)</b>

**YARRIAMIACK SHIRE COUNCIL**  
**BALANCE SHEET**  
**AS AT 30th JUNE 2016**

	2014/2015 Budget	2014/2015 Actuals	June Actuals	2015/2016 Budget	YTD Actuals	Forecast	YTD Variance	YTD % Variance
<b>Current Assets</b>								
Cash & Cash Equivalents Investments	\$ 2,992,000	\$ 4,322,000	\$ (853,483)	\$ 1,429,000	\$ 1,824,355	\$ 1,429,000	\$ (395,355)	(28%)
Rate Debtors	\$ 900,000	\$ 1,185,000	\$ (182,662)	\$ 850,000	\$ 1,406,540	\$ 850,000	\$ (556,540)	(65%)
Debtors	\$ 511,000	\$ 407,000	\$ (187,491)	\$ 94,000	\$ 221,281	\$ 94,000	\$ (127,281)	(135%)
Other Current Accrued Assets	\$ 180,000	\$ 206,000	\$ 81,750	\$ 180,000	\$ 153,134	\$ 180,000	\$ 26,866	15%
Inventory On Hand	\$ 900,000	\$ 484,000	\$ (954)	\$ 711,000	\$ 372,922	\$ 711,000	\$ 338,078	48%
Assets Held for Resale	\$ 84,000	\$ 31,000	\$ -	\$ 15,000	\$ 31,320	\$ 15,000	\$ (16,320)	(109%)
<b>Current Assets Total</b>	<b>\$ 5,567,000</b>	<b>\$ 6,635,000</b>	<b>\$ (1,142,840)</b>	<b>\$ 3,279,000</b>	<b>\$ 4,009,552</b>	<b>\$ 3,279,000</b>	<b>\$ (730,552)</b>	
<b>Non Current Assets</b>								#DIV/0!
Non Current Debtors	\$ -	\$ 1,000	\$ -	\$ -	\$ 609	\$ -	\$ (609)	0%
Investments	\$ 350,000	\$ 481,000	\$ -	\$ 357,000	\$ 480,752	\$ 357,000	\$ (123,752)	0%
Fixed Assets	\$ 149,645,000	\$ 154,054,000	\$ 327,846	\$ 159,177,000	\$ 162,472,885	\$ 159,177,000	\$ (3,295,885)	(2%)
<b>Non Current Assets Total</b>	<b>\$ 149,995,000</b>	<b>\$ 154,536,000</b>	<b>\$ 327,846</b>	<b>\$ 159,534,000</b>	<b>\$ 162,954,246</b>	<b>\$ 159,534,000</b>	<b>\$ (3,420,246)</b>	
<b>TOTAL ASSETS</b>	<b>\$ 155,562,000</b>	<b>\$ 161,171,000</b>	<b>\$ (814,994)</b>	<b>\$ 162,813,000</b>	<b>\$ 166,963,798</b>	<b>\$ 162,813,000</b>	<b>\$ (4,150,798)</b>	
<b>Current Liabilities</b>								
Creditors	\$ (1,200,000)	\$ (2,070,000)	\$ 612,177	\$ (1,200,000)	\$ (993,210)	\$ (1,200,000)	\$ (206,790)	17%
Current Loans	\$ (151,000)	\$ (136,000)	\$ 31,461	\$ (62,000)	\$ (104,512)	\$ (135,973)	\$ 42,512	(69%)
Short Term Provisions	\$ (2,619,000)	\$ (2,854,000)	\$ (8,822)	\$ (2,619,000)	\$ (2,872,136)	\$ (2,619,000)	\$ 253,136	(10%)
Trust & Deposits	\$ -	\$ (31,000)	\$ 3,591	\$ -	\$ (181,111)	\$ -	\$ 181,111	0%
<b>Current Liabilities Total</b>	<b>\$ (3,970,000)</b>	<b>\$ (5,091,000)</b>	<b>\$ 638,407</b>	<b>\$ (3,881,000)</b>	<b>\$ (4,150,969)</b>	<b>\$ (3,954,973)</b>	<b>\$ 269,969</b>	
<b>Non Current Liabilities</b>								
Long Term Provisions	\$ (404,000)	\$ (519,000)	\$ -	\$ (404,000)	\$ (519,433)	\$ (404,000)	\$ 115,433	(29%)
Non Current Loans	\$ (199,000)	\$ (215,000)	\$ (6,170)	\$ (229,000)	\$ (109,989)	\$ (229,000)	\$ (119,011)	52%
<b>Non Current Liabilities Total</b>	<b>\$ (603,000)</b>	<b>\$ (734,000)</b>	<b>\$ (6,170)</b>	<b>\$ (633,000)</b>	<b>\$ (629,422)</b>	<b>\$ (633,000)</b>	<b>\$ (3,578)</b>	
<b>TOTAL LIABILITIES</b>	<b>\$ (4,573,000)</b>	<b>\$ (5,825,000)</b>	<b>\$ 632,237</b>	<b>\$ (4,514,000)</b>	<b>\$ (4,780,391)</b>	<b>\$ (4,587,973)</b>	<b>\$ 266,391</b>	
<b>NET ASSETS</b>	<b>\$ (150,989,000)</b>	<b>\$ (155,346,000)</b>	<b>\$ 182,757</b>	<b>\$ (158,299,000)</b>	<b>\$ (162,183,407)</b>	<b>\$ (158,225,027)</b>	<b>\$ 3,884,407</b>	
<b>Current Assets</b>								
Accumulated Surplus/Deficit	\$ (64,189,000)	\$ (60,384,000)	\$ 182,757	\$ (58,941,000)	\$ (58,804,752)	\$ (58,867,027)	\$ (136,248)	0%
Asset Revaluation Reserve	\$ (86,800,000)	\$ (94,962,000)	\$ -	\$ (99,358,000)	\$ (103,378,656)	\$ (99,358,000)	\$ 4,020,656	(4%)
<b>TOTAL EQUITY</b>	<b>\$ (150,989,000)</b>	<b>\$ (155,346,000)</b>	<b>\$ 182,757</b>	<b>\$ (158,299,000)</b>	<b>\$ (162,183,407)</b>	<b>\$ (158,225,027)</b>	<b>\$ 3,884,407</b>	

**YARRIAMIACK SHIRE COUNCIL**

**Investments**

Bendigo Bank	\$ 325,769.81	2.60%	01/09/2016
Commonwealth Bank	\$ 129,070.64	2.35%	19/07/2016
AMP (oncall)	\$ 510.39		Oncall
<b>\$</b>	<b>455,350.84</b>		

**Loans**

	Term & Rate	Finish Date
National Australia Bank - Unfunded Superannuation	\$ 214,501 Fixed at 5.21%	30/06/2018
<b>\$</b>	<b>214,501</b>	

# Rates Report - July 2016

Prepared by Chantelle Pitt

Rate Code	Ward Description	Total Income	Rebate Total	Receipts	Total
General Rates	Dunmunkle	\$ 3,178,152.27	\$ (48,223.59)	\$ (2,796,527.78)	\$ 333,400.90
	Hopetoun	\$ 3,449,480.38	\$ (37,907.25)	\$ (3,131,739.82)	\$ 279,833.31
	Warracknabeal	\$ 4,213,130.36	\$ (62,471.26)	\$ (3,778,818.78)	\$ 371,840.32
<b>Total</b>		<b>\$ 10,840,763.01</b>	<b>\$ (148,602.10)</b>	<b>\$ (9,707,086.38)</b>	<b>\$ 985,074.53</b>
120L Residential Garbage Service	Dunmunkle	\$ 145,153.21	\$ (9,331.56)	\$ (101,022.97)	\$ 34,798.68
	Hopetoun	\$ 121,369.02	\$ (7,234.98)	\$ (73,218.77)	\$ 40,915.27
	Warracknabeal	\$ 210,964.98	\$ (9,872.05)	\$ (150,935.12)	\$ 50,157.81
<b>Total</b>		<b>\$ 477,487.21</b>	<b>\$ (26,438.59)</b>	<b>\$ (325,176.86)</b>	<b>\$ 125,871.76</b>
120L Commercial Garbage Service	Dunmunkle	\$ 4,508.10	\$ -	\$ (4,161.08)	\$ 347.02
	Hopetoun	\$ 5,278.47	\$ -	\$ (4,297.87)	\$ 980.60
	Warracknabeal	\$ 4,563.73	\$ -	\$ (3,832.75)	\$ 730.98
<b>Total</b>		<b>\$ 14,350.30</b>	<b>\$ -</b>	<b>\$ (12,291.70)</b>	<b>\$ 2,058.60</b>
120L Rural Garbage Service	Dunmunkle	\$ 4,491.10	\$ (109.65)	\$ (4,220.74)	\$ 160.71
	Hopetoun	\$ 2,345.09	\$ -	\$ (1,931.74)	\$ 413.35
	Warracknabeal	\$ 6,089.32	\$ (55.81)	\$ (5,477.01)	\$ 556.50
<b>Total</b>		<b>\$ 12,925.51</b>	<b>\$ (165.46)</b>	<b>\$ (11,629.49)</b>	<b>\$ 1,130.56</b>
240L Residential Garbage Service	Dunmunkle	\$ 6,460.99	\$ (345.94)	\$ (5,400.31)	\$ 714.74
	Hopetoun	\$ 7,578.95	\$ (387.45)	\$ (4,950.88)	\$ 2,240.62
	Warracknabeal	\$ 23,641.33	\$ (604.36)	\$ (20,259.10)	\$ 2,777.87
<b>Total</b>		<b>\$ 37,681.27</b>	<b>\$ (1,337.75)</b>	<b>\$ (30,610.29)</b>	<b>\$ 5,733.23</b>
240L Commercial Garbage Service	Dunmunkle	\$ 42,700.99	\$ -	\$ (29,970.69)	\$ 12,730.30
	Hopetoun	\$ 32,891.65	\$ -	\$ (29,576.92)	\$ 3,314.73
	Warracknabeal	\$ 98,907.45	\$ -	\$ (94,149.50)	\$ 4,757.95
<b>Total</b>		<b>\$ 174,500.09</b>	<b>\$ -</b>	<b>\$ (153,697.11)</b>	<b>\$ 20,802.98</b>
240L Rural Garbage Service	Dunmunkle	\$ 10,199.52	\$ -	\$ (9,632.88)	\$ 566.64
	Hopetoun	\$ 9,507.06	\$ -	\$ (8,719.29)	\$ 787.77
	Warracknabeal	\$ 20,411.28	\$ -	\$ (19,964.68)	\$ 446.60
<b>Total</b>		<b>\$ 40,117.86</b>	<b>\$ -</b>	<b>\$ (38,316.85)</b>	<b>\$ 1,801.01</b>
80L Residential Garbage Service	Dunmunkle	\$ 31,529.65	\$ (2,108.42)	\$ (20,147.47)	\$ 9,273.76
	Hopetoun	\$ 32,928.88	\$ (2,488.71)	\$ (18,922.59)	\$ 11,517.58
	Warracknabeal	\$ 38,899.34	\$ (1,944.64)	\$ (27,772.89)	\$ 9,181.81
<b>Total</b>		<b>\$ 103,357.87</b>	<b>\$ (6,541.77)</b>	<b>\$ (66,842.95)</b>	<b>\$ 29,973.15</b>
80L Rural Garbage Service	Dunmunkle	\$ 1,118.56	\$ -	\$ (1,118.56)	\$ -
	Hopetoun	\$ 838.92	\$ -	\$ (838.92)	\$ -
	Warracknabeal	\$ 3,495.50	\$ (45.48)	\$ (3,443.35)	\$ 6.67
<b>Total</b>		<b>\$ 5,452.98</b>	<b>\$ (45.48)</b>	<b>\$ (5,400.83)</b>	<b>\$ 6.67</b>
Residential Kerbside Recycling	Dunmunkle	\$ 119,263.76	\$ (8,034.62)	\$ (84,773.29)	\$ 26,455.85
	Hopetoun	\$ 102,328.95	\$ (7,037.90)	\$ (67,822.53)	\$ 27,468.52
	Warracknabeal	\$ 174,855.31	\$ (8,314.31)	\$ (130,714.66)	\$ 35,826.34
<b>Total</b>		<b>\$ 396,448.02</b>	<b>\$ (23,386.83)</b>	<b>\$ (283,310.48)</b>	<b>\$ 89,750.71</b>
Commercial Kerbside Recycling	Dunmunkle	\$ 10,643.69	\$ -	\$ (8,348.50)	\$ 2,295.19
	Hopetoun	\$ 8,322.55	\$ -	\$ (7,930.06)	\$ 392.49
	Warracknabeal	\$ 16,104.55	\$ -	\$ (14,968.57)	\$ 1,135.98
<b>Total</b>		<b>\$ 35,070.79</b>	<b>\$ -</b>	<b>\$ (31,247.13)</b>	<b>\$ 3,823.66</b>
Rural Kerbside Recycling	Dunmunkle	\$ 2,117.77	\$ (27.45)	\$ (1,986.50)	\$ 103.82
	Hopetoun	\$ 1,898.14	\$ -	\$ (1,702.02)	\$ 196.12
	Warracknabeal	\$ 1,504.80	\$ (24.42)	\$ (1,480.38)	\$ -
<b>Total</b>		<b>\$ 5,520.71</b>	<b>\$ (51.87)</b>	<b>\$ (5,168.90)</b>	<b>\$ 299.94</b>
Municipal Charge	Dunmunkle	\$ 125,876.23	\$ (5,296.47)	\$ (90,324.72)	\$ 30,255.04
	Hopetoun	\$ 147,349.68	\$ (4,736.26)	\$ (88,973.39)	\$ 53,640.03
	Warracknabeal	\$ 181,624.52	\$ (5,483.47)	\$ (129,392.79)	\$ 46,748.26
<b>Total</b>		<b>\$ 454,850.43</b>	<b>\$ (15,516.20)</b>	<b>\$ (308,690.90)</b>	<b>\$ 130,643.33</b>
SDL/Bins/Fire/Old Municipal Charge	Dunmunkle	\$ 6,514.00	\$ -	\$ (463.17)	\$ 6,050.83
	Hopetoun	\$ 4,683.47	\$ -	\$ (50.00)	\$ 4,633.47
	Warracknabeal	\$ 5,330.93	\$ -	\$ (581.67)	\$ 4,749.26
<b>Total</b>		<b>\$ 16,528.40</b>	<b>\$ -</b>	<b>\$ (1,094.84)</b>	<b>\$ 15,433.56</b>
Credits	Dunmunkle	\$ -	\$ -	\$ (24,858.56)	\$ (24,858.56)
	Hopetoun	\$ -	\$ -	\$ (21,702.49)	\$ (21,702.49)
	Warracknabeal	\$ -	\$ -	\$ (26,454.39)	\$ (26,454.39)
<b>Total</b>		<b>\$ -</b>	<b>\$ -</b>	<b>\$ (73,015.44)</b>	<b>\$ (73,015.44)</b>
Fire Services Fixed Charge	Dunmunkle	\$ 231,137.90	\$ (17,000.00)	\$ (177,802.98)	\$ 36,334.92
	Hopetoun	\$ 265,283.34	\$ (12,650.00)	\$ (194,514.53)	\$ 58,118.81
	Warracknabeal	\$ 334,876.32	\$ (20,150.00)	\$ (258,555.83)	\$ 56,170.49
<b>Total</b>		<b>\$ 831,297.56</b>	<b>\$ (49,800.00)</b>	<b>\$ (630,873.34)</b>	<b>\$ 150,624.22</b>
Fire Services Levy	Dunmunkle	\$ 137,795.11	\$ -	\$ (130,050.77)	\$ 7,744.34
	Hopetoun	\$ 163,133.33	\$ -	\$ (156,055.33)	\$ 7,078.00
	Warracknabeal	\$ 185,525.36	\$ -	\$ (177,913.53)	\$ 7,611.83
<b>Total</b>		<b>\$ 486,453.80</b>	<b>\$ -</b>	<b>\$ (464,019.63)</b>	<b>\$ 22,434.17</b>
<b>Grand Total</b>		<b>\$ 13,932,805.81</b>	<b>\$ (271,886.05)</b>	<b>\$ (12,148,473.12)</b>	<b>\$ 1,512,446.64</b>

% Outstanding of Current Rates & Charges

10.86%

% Outstanding 2015

10.93%

% Outstanding 2014

9.61%

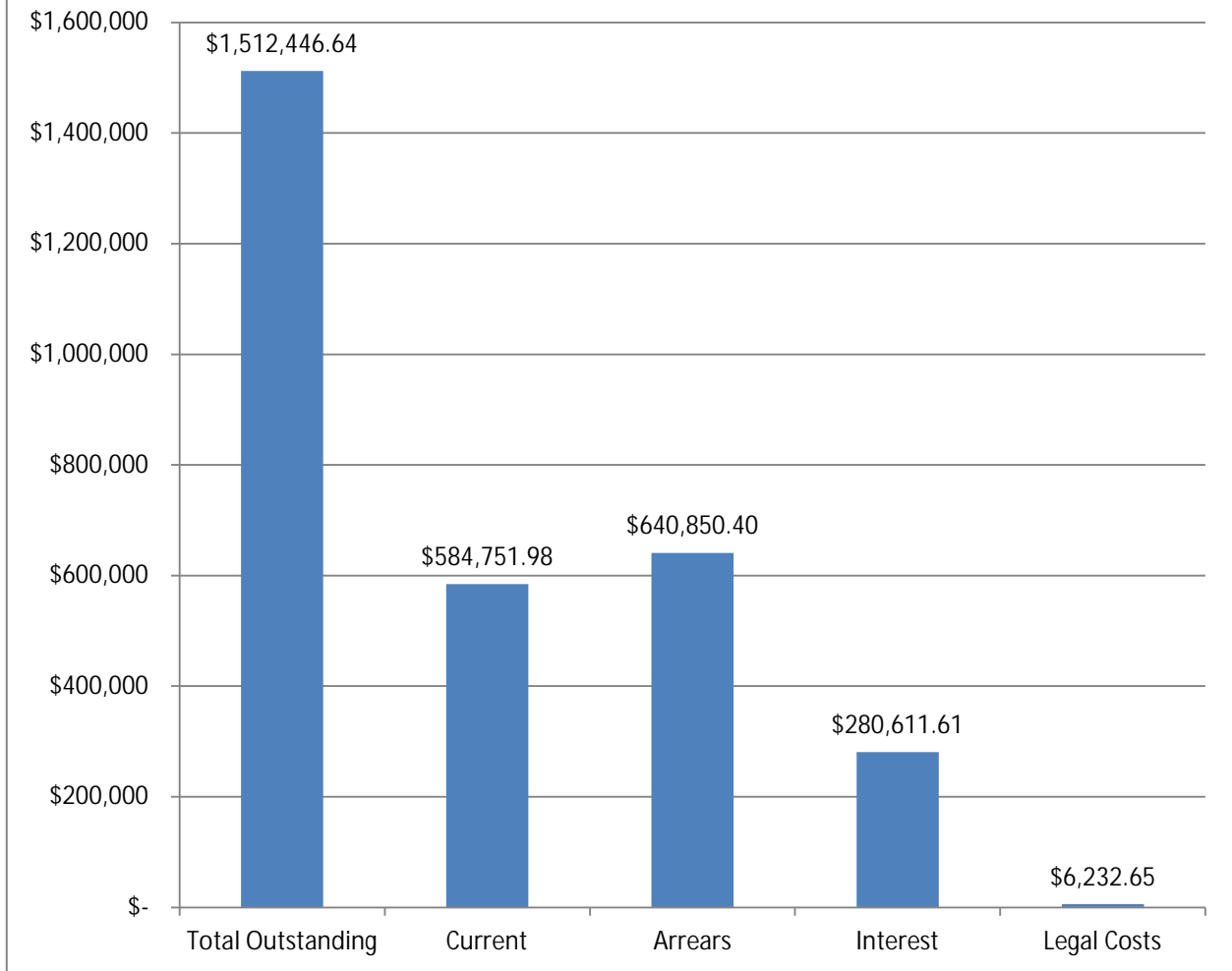
% Outstanding 2013

10.52%

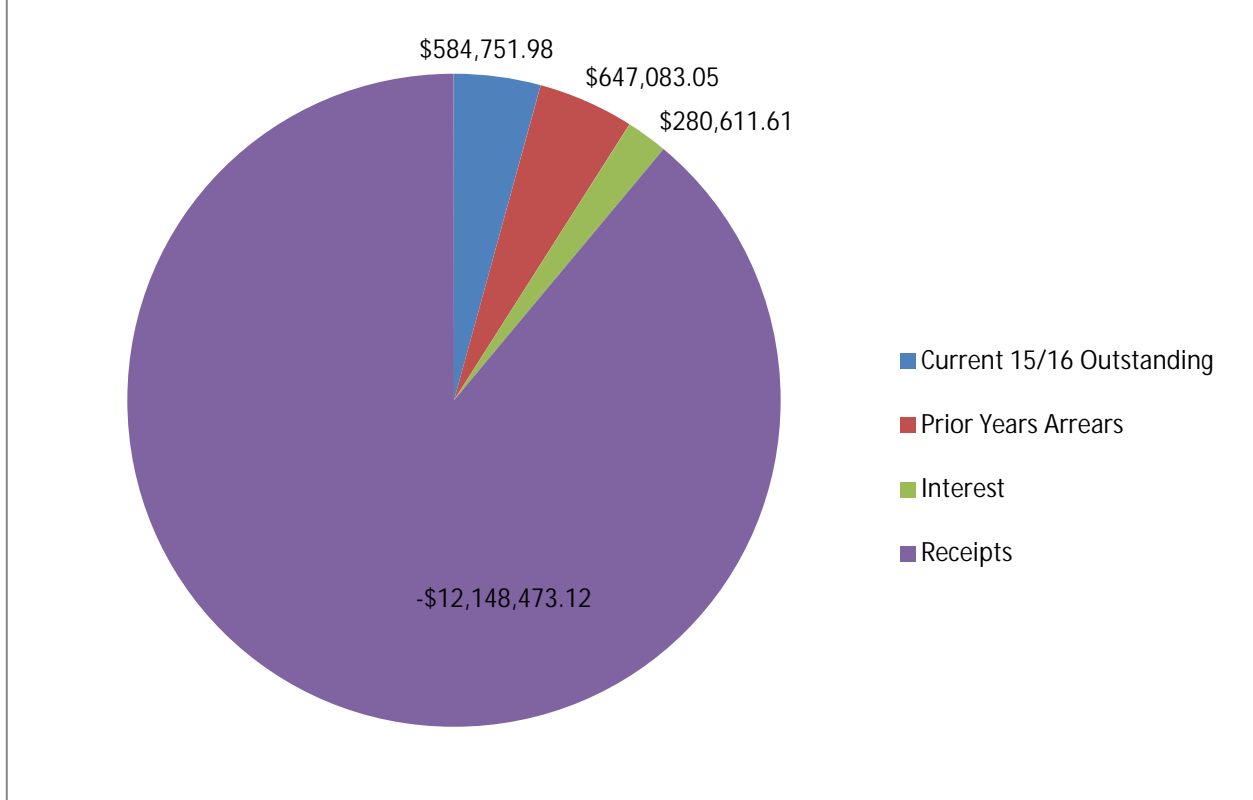
## Recommendation

That the report be received.

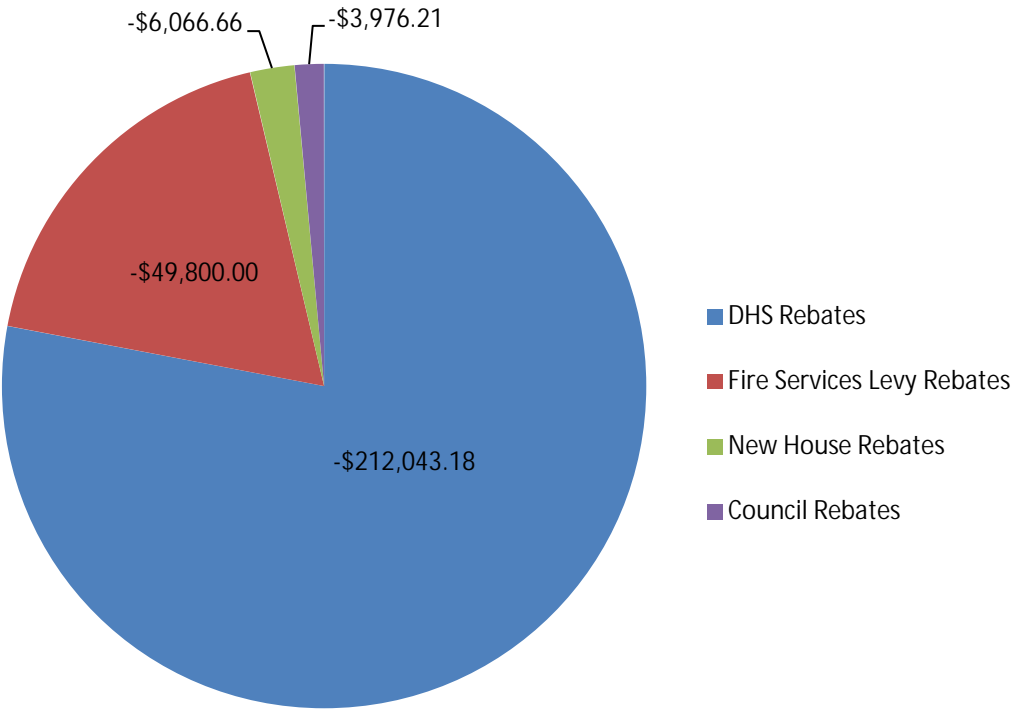
## Breakdown of Rates Outstanding



## Breakdown of Rates Outstanding



# 2015/16 Rebates



Application Identifier	Application type	Property Location					Estimated Cost of Works	Proposed Use or Development	Applicant Details			Date Application Received	Responsible Authority Outcome	Date of Responsible Authority Outcome	
		Street Address		Crown Description		Lot on Plan			Name	Street Number, Name	Locality				
		Street Number, Name	Locality	Allotment, Parish/Township	Lot	Plan									Lot
													4.1	4.2	
TP69-15	New application	Reeds Rd	Lascelles	CA37 Parish Gama			25,000	Use and Development of Land for mineral extarcttion (Gypsum Extraction)	Mark Smith	32 Campbell St	Birchip	27/10/2015	Notice of decision issued by delegate of the Responsible Authority	27/04/2016	
TP07-16	New application	68 Phillips St	Beulah	CA4 Sec 9 Parish Galaquil			5,000	Sale of Package Liquor	Willem Polman	24 Hent Highway	Beulah	15/02/2016	Notice of decision issued by delegate of the Responsible Authority	27/04/2016	
TP11-16	New application	53-55 Scott St	Warracknabeal		Lot 1	TP21	0	2 Lot Subdivision	Northwest Real Estate	PO Box 435	Warracknabeal	19/04/2016	Permit issued by a delegate of the Responsible Authority	01/06/2016	
TP12-16	New application	6 R Learmonth Rd	Minyip		Lot 2	PS42	1,000,000	Grain Processing & Storage	Wimpak Export Company Pty Ltd	PO Box 101	Minyip	21/04/2016	Permit issued by a delegate of the Responsible Authority	16/06/2016	
TP13-16	New application	123 King Rd	Crymelon		Lot 2	LP11	0	Subdivision	Mark Bish	123 King Rd	Crymelon	26/04/2016	In progress		
TP14-16	New application	109 Wimmera Highway	Rupanyup	CA4 Parish of Rupanyup	CA4	TP76	197,900	Extensions to Existing Building	Rohan Fry	PO Box 671	Stawell	11/05/2016	In progress		
TP15-16	New application	69-75 Brook St	Woomelang		Lot 1	TP44	100,000	Wayside Stop	Woomelang & district Development Association	PO Box 27	Woomelang	11/05/2016	In progress		
TP16-16	New application	19 Henty Highway	Beulah		Lot 2	TP67	250,000	Building and works associated with a second dwelling	Peter Hallam	19 Henty Highway	Beulah	13/05/2016	In progress		
TP17-16	New application	7 McClintock St	Murtoa	CA2 Sec 14			100,000	Development of a Second Dwelling	Mick Newell	20 Marma Street	Murtoa	27/05/2016	In progress		
TP18-16	New application	227 Ashens-Jackson Rd	Rupanyup	CA17, CA17A, CA18 Parish of Rupanyup			0	3 Lot Subdivision	Sally Boyd	83 Bayshore Ave	Clifton Springs	30/05/2016	In progress		
TP19-16	New application	144 Scott St	Warracknabeal	CA 7(Pt), CA 8 (Pt) Parish Werrigar	Lots 1 & 2	TP13	120,000	Alterations & Extensions	Mark de Clifford	PO Box 221	Stawell	06/06/2016	Permit issued by a delegate of the Responsible Authority	27/06/2016	
TP20-16	New application	48 Lake St	Murtoa	CA 12 (pt) Sec 27, Parish of Ashens			31,850	Extensions to Existing Building	Natasha Pietsch	PO Box 2	Murtoa	06/06/2016	In progress		
TP21-16	New application	20 Strachan St	Hopetoun		Lot 96	PS00	19,500	Construction of a Garage	Gary Hateley	20 Strachan St	Hopetoun	17/06/2016	In progress		
TP22-16	New application	570 Hopetoun-Sea Lake Rd	Hopetoun	CA 18 Parish of Nyallo			70,000	Construction of a Storage Shed	Lindsay Wilson	570 Hopetoun-Sea Lake Rd	Hopetoun	16/06/2016	Permit issued by a delegate of the Responsible Authority	27/06/2016	
TP23-16	New application	Henty Highway	Brim	CA 47, Parish Batchica			17,600	Erection of a Sculpture	Peter Martin	1006 Martin Rd	Brim	27/06/2016	In progress		
TP24-16	New application	153 Dumbouy Rd	Warracknabeal		Lot 1	TP40	20,000	Construction of a Storage Shed	Peter Huebner	PO Box 208	Warracknabeal	27/06/2016	In progress		
TP25-16	New application	91-93 Lascelles St	Hopetoun	CA 1 (Pt) Parish Goyura	47 & 48	PS00	0	Subdivision	Paul Fischer	100 Lascelles St	Hopetoun	27/06/2016	In progress		