

MINUTES OF ORDINARY MEETING OF YARRIAMBIACK SHIRE COUNCIL HELD ON WEDNESDAY 25 MAY 2016 AT THE MUNICIPAL OFFICE 34 LYLE STREET WARRACKNABEAL AT 9:30AM

1 WELCOME

2 ACKNOWLEDGEMENT

We acknowledge the traditional owners of the land on which we meet today and pay our respect to both past and present elders.

3 PRAYER

Almighty God, without whom no Council can stand nor anything prosper we ask that you be present and guide us in our deliberations today. We pray that we will be fair in our judgements and wise in our actions and that decisions will be made with goodwill and a clear conscience for the betterment and welfare of the people of Yarriambiack Shire.

Amen

4 PRESENT

Cr R Kingston, Cr T Grange, Cr A McLean, Cr K Zanker, Cr H Ballentine, Cr G Massey, Cr L Woods, Ray Campling (Chief Executive Officer), James Magee (Director Infrastructure & Planning) and Bernardine Schilling (Executive Assistant)

5 APOLOGIES

6 CONFIRMATION OF MINUTES

Ordinary Meeting of Council – 27 April 2016

Moved Cr T Grange seconded Cr K Zanker the Minutes of the Ordinary Meeting of Council held on 27 April 2016 be confirmed.

Carried

7 DECLARATION OF CONFLICT OF INTEREST

8 BUSINESS ARISING

8.1 Action List from last meeting

8.2 Ongoing and Pending Action List

9 PETITIONS

10 REPORTS

Corporate Reports

- 10.1 Mayor's Report
- 10.2 Councillor's Reports
- 10.3 Chief Executive Officer – Activity Report
- 10.4 Director Infrastructure & Planning Report
- 10.5 Capital Works Program Report
- 10.6 Community Services Report
- 10.7 Infrastructure Services Report
- 10.8 Community Projects Report

11 REPORTS FOR DECISION

- 11.1 Finance Report
- 11.2 Revenue Report
- 11.3 Budget draft 2016/2017
- 11.4 Yarriambiack Shire Council Sport & Recreation Strategy
- 11.5 Community Group Financial Assistance Scheme - May 2016
- 11.6 Request for the Unused Road Reserve off Kewell North School Road be discontinued
- 11.7 Section 193 Entrepreneurial Powers Incorporation of Rural Council's Victoria – Prepared by Ray Campling
- 11.8 Municipal Rate Relief – New Houses Policy - prepared by Chantelle Pitt

10.1 Mayor's Report – Prepared by Ray Kingston

5 May	Formally Opened Horsham Regional Art Gallery's Exhibition, Pushing The Sky' - amazing and beautiful array of local and locally connected works on display
10 May	Celebrating Volunteers BBQ, Warracknabeal Neighbourhood House
11 May	Council Forum
12 May	Rural Councils Victoria Forum, Melbourne
13 May	MAV State Council. Melbourne - attended the first session
21 – 22 May	Yarrilinks Tree Planting Weekend - assisted as a site leader
23 May	Funding Announcement by Member for Mallee Andrew Broad, Warracknabeal Yarriambiack Community Drought meeting, Warracknabeal
24 May	Wimmera Mallee Sustainability Alliance meeting, Horsham

10.2 Councillor's Reports**Cr H Ballentine**

11 May Attended Council Forum in Warracknabeal

24 May Attended Wimmera Mallee Tourism Meeting

Cr G Massey

29 April Attended Res Murra Warra Wind Farm information session at Warracknabeal

2 May Attended Yarriambiack Tourism meeting at Rosebery

10 May Attended Warracknabeal's 150th anniversary public meeting

Attended Warracknabeal Action Group

11 May Council Forum

16 May Yarrilinks meeting, Rupanyup and site inspection, Burrum

21 May Yarrilinks tree planting at Burrum

Cr K Zanker

27 April Council Meeting

28 April Attended the WORDS meeting

9 May W'Beal Swimming Club AGM change over of office bearers

11 May Attended Council Forum

Attended YYAC meeting

12 May Attended Volunteering Western Victoria (V W V) special meeting

13 May Attended MAV state council (Melbourne)

17 May Attended Rural Financial Counselling Services Meeting (Mildura)

20 May Linking learning WORDS - All projects meeting (Melbourne)

24 May Attended Hub AGM

24 May Attended V W V general meeting & Regional Living Teleconference

Attended HUB general meeting

25 May "Understanding and Engaging 21st Century Volunteers" forum at Grains Innovation Park hosted by V W V

Cr L Woods

- 5 MAY Spoke with ratepayers regarding the Sheep Hills Hall and much-needed works to Hall, referred to James Magee for further discussion
- 11 May Attended Council Forum
- 19 May Interviewed by Luke Henriques-Gomes, a Master's student at Monash University re: his topic "bridging the gap in local Government Representation".
- 23 May Met with Andrew Broad - another hat for the first part, but also informal chat re Yarriambiack Shire; funding announcements, various matters

Cr A McLean

- 29 April Attended Res Murra Warra Wind Farm information session at Warracknabeal
- 3 May Attended YCHANGE meeting in Hopetoun
- 6 May Attended Grampians Central West Waste and Resource Recovery Group Audit, Board meeting and Local Government Forum in Ballarat
- 11 May Attended Council Forum
- 23 May Attended Yarriambiack Drought meeting

Cr T Grange

- 27 April Formal Council Meeting in Warracknabeal
- 5 May Attended VLGA Cost shifting working group task committee in Melbourne
- 5 May Met with Dr Andrew Hollows CEO VLGA – various matters
- 10 May Attended National Volunteers Week celebrations in Warracknabeal
- 10 May Attended the WDA Board meeting in Stawell
- 11 May Council Forum
- 13 May Representing the Mayor, attended the Wimmera Health Care Group reception for the Hon Jill Hennessy – Minister for Health who announced a one million dollar State Government grant towards the Wimmera Cancer Centre in Horsham
- 23 May Attended by invitation the Federation University Graduation Ceremony in Horsham
- 24 May Attended Wimmera Development Association Executive Board meeting

10.3 Chief Executive Officer, Activity Report – Prepared by Ray Campling

- Attended Grampians Regional Management Forum in Ararat
- Met with Chris Scott – CEO Wimmera Health Care - Wimmera Cancer Centre
- Met with Darlene Marshall and Carolynne Handorf – Women’s Health Grampians
- Attended Wimmera Southern Mallee Crime Prevention meeting in Stawell
- Attended Wimmera Local Government CEO’s meeting in Horsham
- Met with Marianne Hendron CEO - Women’s Health Grampians - Violence Against Women Regional Strategy
- Attended Wimmera Southern Mallee LLEN Annual General Meeting at the Horsham Special School
- Met with Ralph Kenyon - Executive Officer WDA - Various matters
- Met with John Hicks - CEO Buloke - North West Municipalities Association & Rural Councils’ Victoria
- With Councillor Terry Grange attended Wimmera Development Association meeting in Stawell
- Met with Victorian Electoral Commission - 2016 Council Elections
- Met with Tim Shaw - Wimmera Southern Mallee LLEN - Mentoring Program
- Attended Rural Council’s Victoria Executive meeting and Forum in Melbourne
- Attended MAV State Council meeting with Councillor Kylie Zanker and Mayor Ray Kingston

10.4 Director Infrastructure & Planning Report – Prepared by James Magee

Accident on Henty Highway near Hopetoun

During mid April a young man from Maryborough unfortunately was involved in a fatal accident where the Henty Highway crosses Yarriambiack Creek. The vehicle he was driving left the road and struck trees immediately adjacent the bridge.

Unfortunately the bridge or culvert structure does not have guardrail even though it is located on a curve and there is a drop off of approximately 2.5m on either side. Interestingly, three other creek crossings on the Henty Highway, at Brim, Galaquil and just north of Hopetoun all have guardrail even though they are on straight sections of road.

The Henty Highway is controlled and maintained by Vicroads and as such I have requested Vicroads to place guardrail or other protective treatment on the structure. A debrief of emergency agencies was held 18 May 2016 at Gateway BEET Hopetoun.

School Crossing at Hopetoun

The new school crossing in Dodgshun Street is complete and operating successfully

Aerodrome Lighting Upgrade

The replacement of the lighting at Warracknabeal Aerodrome is complete and has been successfully tested. The Weather Station works are under way with the slabs for the Rain Gauge, Screen Stand, AWIS and anemometer in place. The security fence around the weather station area is also complete and the power supply is in place. Remaining installation of weather station equipment will be undertaken by the Bureau of Meteorology.

Replacement of lights at Hopetoun Aerodrome commenced 23 May with lighting works at both aerodromes finished by end June.

Warracknabeal Flood Levees

A draft design for levees has been completed and Council Officers will review the designs with the designer and the Wimmera CMA on 26 May 2016.

Fuel Outlet at Rupanyup

Riordan Fuels are nearing completion of the diesel outlet off McIntyre's Road, Rupanyup. Remaining works include installation of culverts to improve access.

Moved Cr A McLean seconded Cr H Ballentine that Council write to Vicroad's Ewen Nevett and to the Minister of Transport, Luke Donnellan with the request of constructing guardrail on the Henty Highway bridge located south of Hopetoun.

Carried

Environment – Prepared by Geoff Harvey

- Manage Green Army team project
- Deal with AGL and Powercor re: Office solar installation
- Inspect trees with GWM Water staff re: Removal to do repairs
- Liaise with Parks Vic staff and contractors re: Pest work at the Rifle Range Reserve

Risk & Safety Report to Council – Prepared Barry Sullivan

- Management team have supplied the details required for Councils Business Continuity Plan. The plan has been sent back to Jardine Lloyd Thompson (JLT) in Melbourne for review and finalisation
- Work Health & Safety Newsletter has been sent out to all staff covering the areas of Community Services & Development, Tech Services & Corporate Services. A separate newsletter is sent out by the Safety Officer which focuses on plant and site health & safety news for staff in the field
- I am currently reviewing Councils Risk Management documentation. A review and upgrade of Councils Risk Management Strategy is underway and when finalised, will be submitted to the management team to review
- A recording process has been developed to record the use of agricultural chemicals (spraying) and bait laying to control pest animals. Records will be kept from both council staff & contractors engaged by council to perform such work. The process aligns to current legislation and the documentation developed is being reviewed by the Chemical Regulator from DELWP to ensure it aligns to the legislative framework

YARRIAMBIACK SHIRE COUNCIL

COUNCIL MEETING

MINUTES

25 MAY 2016

Building Activity Report – Prepared by Kathy Edwards

YARRIAMBIACK SHIRE COUNCIL										
COUNCIL REPORT										
Municipal District:		Yarriambiack Shire Council					Month of April 2016			
Council register Number	Name of Relevant Building Surveyor	Type of perm, temporary approval or amendment	Permit temporary approval or amendment number*	Application Date	Permit, temporary approval or amendment date*	Building Address	Description of Building work or Use of Building	Cost of Building Work*	General Building Levy	
BP30-16	W.Wilkie	Building	1164/2016/30/0	06/04/2016	07/04/2016	49/53 Swann St, Brim	Demolition	\$9,900	\$0.00	
BP31-16	W.Wilkie	Building	1164/2016/31/0	11/04/2016	14/04/2016	95 Dyer St, Rupanyup	Fuel Tank	\$15,812	\$20.25	
							Total		\$20.25	
Name of Council Officer supplying this register: Kathy Edwards										

Planning Permit Activity Report for April 2016 – Prepared by David Young
Attachment

10.5 Capital Works Program 2015/2016 – Prepared by Chris Lehmann

Roads & Streets – Urban Roads				
<i>Project</i>	<i>% Completed</i>	<i>Start Date</i>	<i>Completion Date</i>	<i>Comments</i>
Brock Street Woomelang	30%	May 2016		Improve median strip with new tree and turning areas
Cemetery Road Warracknabeal	100%	February 2016	February 2016	Construct and seal 4 metres wide, 200 metres long from Anderson Street heading west (near Mens Shed)
Cook Street Woomelang	100%	April 2016	April 2016	Construct and seal 5.5 metres wide, Roberts Street to Church Street
Gould Street Warracknabeal	100%	February 2016	February 2016	Construct and seal 7 metres wide Cox Street to Allan Street
Long Street Warracknabeal	100%	February 2016	February 2016	Construct and seal 4 metres wide Dungey Street to Dally Street
Market Street Minyip	100%	March 2016	March 2016	Construct and seal shoulder 2.5 metres wide Foundry Street to McLeod Street
Mill Street Minyip	100%	July 2015	August 2015	Willmores
Roberts Street Woomelang	100%	April 2016	April 2016	Construct and seal 5.5 metres wide, Brock Street to Cook Street
Scott Street Warracknabeal	100%	February 2016	February 2016	Construct and seal 15 metres wide at Arnold Street intersection
Smith Street Warracknabeal	100%	February 2016	February 2016	Construct and seal 4 metres wide from Dungey Street
Taylor Street Warracknabeal	100%	January 2016	January 2016	Construct and seal 4 metres wide Anderson Street to Secondary College

Roads & Streets – Rural Roads				
<i>Project</i>	<i>% Completed</i>	<i>Start Date</i>	<i>Completion Date</i>	<i>Comments</i>
Banyena Pimpinio Road R2R	100%	October 2015	December 2015	Reconstruct and widen seal to 6.6 metres, total distance 2.8 kms (2 jobs). Job starts at Murtoa Minyip Road heading east
Brim West Road R2R	100%	December 2015	December 2015	Reconstruct seal (4 metres), two sections, total distance 2.86 kms. Job between Fishers Road and Warracknabeal Rainbow Road
Dimboola Minyip Road	100%	March 2016	April 2016	Reconstruct seal to 6.6 metres, length 1.2 kms, works start at Barrat Quarry Road heading east
Gama Sea Lake Road R2R	100%	March 2016	April 2016	Reconstruct seal 4 metres, length 2 kms, section starts east of Lascelles North Road heading east
Longerenong Road	100%	February 2016	February 2016	Widen seal to 6.6 metres for 1.94 kms. Starting point 3 kms from Murtoa Glenorchy Road
Patchewollock Tempy Road R2R	100%	September 2015	November 2015	Construct 6.6 metre seal, length 1.5 kms, starts end of seal Patchewollock end
Sea Lake Lascelles Road R2R	100%	April 2016	May 2016	Reconstruct seal 6.6 metres, length 1.3 kms, starts at Shire boundary heading west

Roads & Streets – Rural Roads (continued)				
<i>Project</i>	<i>% Completed</i>	<i>Start Date</i>	<i>Completion Date</i>	<i>Comments</i>
Watchem Warracknabeal Road R2R	100%	September 2015	October 2015	Reconstruct seal to 5.5 metres, length 1.6 kms. Starting 400 metres east of Rupanyup Road and going east
Sheep Hills Bangerang Road R2R	100%	January 2016	February 2016	Construct 4 metre seal, 1.4 kms long, starting end of seal heading north

Gravel Shoulders				
<i>Project</i>	<i>% Completed</i>	<i>Start Date</i>	<i>Completion Date</i>	<i>Comments</i>
Banyena Pimpinio Road	100%	May 2016	May 2016	Construct 2 metre wide sandstone shoulder both sides of seal. 2 sections, total length 2.7 kms
Brim West Road R2R	100%	March 2016	March 2016	Construct 2 metre wide sandstone shoulder both sides of seal, 3.4 kms long (either side of Hood Lane)
Dimboola Minyip Road	100%	April 2016	May 2016	Construct 2 metre wide sandstone shoulder both sides of seal, 1 km long
Hopetoun Yaapect Road	100%	December 2015	January 2016	Construct 2 metre wide limestone shoulder both sides of seal, 3.2 kms in length (either side of Websters Road)
Minyip Dimboola Road	100%	April 2016	April 2016	Construct 2 metre wide sandstone shoulder both sides, 500 metres in length
Minyip Rich Avon Road	100%	May 2016	May 2016	Construct 2 metre wide sandstone shoulder both sides of seal, 1.6 kms in length

Gravel Shoulders (continued)				
<i>Project</i>	<i>% Completed</i>	<i>Start Date</i>	<i>Completion Date</i>	<i>Comments</i>
Rosebery Rainbow Road		June 2016		Construct 2 metre wide limestone shoulder both sides of seal, 1 km in length (near Kemps Road)
Rupanyup Road R2R	100%	November 2015	March 2016	Construct 2 metre wide sandstone shoulder both sides of seal. 2 sections, total length 8.5 kms
Sea Lake Lascelles Road	100%	April 2016	April 2016	Construct 2 metre wide limestone shoulder both sides of seal, 1 km in length (east of Maxwells Road)
Sheep Hills Bangerang Road	100%	February 2016	February 2016	Construct 2 metre wide sandstone shoulder both side of seal, 2.1 kms in length
Wyperfeld Park Road		May 2016		Construct 2 metre wide limestone shoulder both sides of seal, 1.5 kms in length (south of Mitchells Road)
Yaapeet Kenmare Road	100%	May 2016	May 2016	Construct 2 metre wide limestone shoulder both sides of seal, 1.6 kms in length (south of Hopetoun Rainbow Road)

Gravel Re-Sheets				
<i>Project</i>	<i>% Completed</i>	<i>Start Date</i>	<i>Completion Date</i>	<i>Comments</i>
3LK Road	100%	May 2016	May 2016	Construct 4 metre wide road, 510 metres in length using Great Western Gravel
A Matthews Road		June 2016		Construct 5 metre wide road, 920 metres in length using St Arnaud Gravel
Ailsa Road	100%	October 2015	October 2015	Construct 5 metre wide sandstone road, 1.29 kms in length
Ailsa Wheat Road	100%	November 2015	November 2015	Construct 4 metre wide sandstone road, 1.17 kms in length
Antwerp Road		April 2016		Construct 4 metre wide sandstone road, 440 metres in length
Areegra Exchange	100%	August 2015	August 2015	St Arnaud Gravel
Averys Road	100%	August 2015	August 2015	Hewitts Pit Sandstone
Bangerang Hall Road	100%	July 2015	July 2015	Hewitts Pit Sandstone
Boolite Donald Road	100%	February 2016	February 2016	Construct 5 metre wide road using St Arnaud Gravel
Boundary Road 2		June 2016		Construct 5 metre wide limestone road, 2.26 kms in length
C Readings Road		May 2016		Construct 4 metre wide road, 1 km in length using Great Western Gravel
Cannum 5 Chain Road		June 2016		Construct 5 metre wide sandstone road, 2.5 kms in length
Clyne Road		June 2016		Construct 4 metre wide sandstone road, 1.5 kms in length
Dogwood Road		May 2016		Construct 4 metre wide sandstone road, 1.8 kms in length

YARRIAMIACK SHIRE COUNCIL

COUNCIL MEETING

MINUTES

25 MAY 2016

Gravel Re-Sheets (continued)				
<i>Project</i>	<i>% Completed</i>	<i>Start Date</i>	<i>Completion Date</i>	<i>Comments</i>
Echunga Road	100%	February 2016	February 2016	Construct 4 metre wide limestone road, 970 metres in length
Feerys Road	100%	February 2016	February 2016	Construct 4 metre wide sandstone road, 810 metres in length
Gama South Road	100%	May 2016	May 2016	Construct 4 metre wide limestone road, 960 metres in length
Goslings Road	100%	July 2015	July 2015	Eys Pit Limestone
Guleys Road		May 2016		Construct 4 metre wide limestone road, 1 km in length
Hoffmans Road	100%	August 2015	August 2015	Murphys Pit Sandstone
Hollands Road	100%	August 2015	August 2015	Hewitts Pit Sandstone
Holtkamps Road	100%	July 2015	July 2015	Chapmans Pit Sandstone
Jollys Road	100%	April 2016	April 2016	Construct 4 metre wide limestone road, 1.5 kms in length
Lah Angle Road	100%	August 2015	August 2015	Hewitts Pit Sandstone
Lascelles North Road	100%	September 2015	September 2015	Construct 4 metre wide limestone road, 4.4 kms in length R2R funding
Lawler Carron Road	100%	July 2015	July 2015	Construct 4 metre wide road using St Arnaud Gravel
McIntyres Road		June 2016		Construct 4 metre wide road, 600 metres in length using Great Western Gravel
Mellis Road	100%	January 2016	January 2016	Construct 4 metre wide road, 2.3 kms in length using St Arnaud Gravel
Moloneys Road		May 2016		Construct 4 metre wide sandstone road, 2.6 kms in length

Gravel Re-Sheets (continued)				
<i>Project</i>	<i>% Completed</i>	<i>Start Date</i>	<i>Completion Date</i>	<i>Comments</i>
Murtoa Cemetery Road	100%	July 2015	July 2015	Chapmans Pit Sandstone
Niewands Road		June 2016		Construct 4 metre wide sandstone road, 1.5 kms in length
Olneys Road	100%	May 2016	May 2016	Construct 4 metre wide road, 460 metres in length using St Arnaud Gravel
Patchewollock Tip Road	100%	October 2015	November 2015	Construct 4 metre wide limestone road, 380 metres in length
Pullens Road		May 2016		Construct 4 metre wide sandstone road, 1.6 kms in length
Ratray Road	100%	August 2015	August 2015	Hewitts Pit Sandstone
Rosebery Rainbow Road	100%	May 2016	May 2016	Construct 4 metre wide limestone road, 500 metres in length
Thompsons Road	100%	August 2015	August 2015	St Arnaud Gravel
Turriff West Road		June 2016		Construct 5 metre wide limestone road, 1.9 kms in length
Two Mile Road		June 2016		Construct 4 metre wide limestone road, 2.6 kms in length
V Schultzs Road	100%	January 2016	January 2016	Construct 4 metre wide sandstone road, 760 metres in length
Wallup Hall Road		June 2016		Construct 4 metre wide sandstone road, 2.7 kms in length
Wardles Road West	100%	August 2015	August 2015	Murphys Pit Sandstone
Wathe Reserve Road	100%	April 2016	April 2016	Construct 4 metre wide limestone road, 860 metres in length
Woods Road	100%	May 2016	May 2016	Construct 4 metre wide road using St Arnaud Gravel

Gravel Re-Sheets (continued)				
Project	% Completed	Start Date	Completion Date	Comments
Woollards Road	100%	October 2015	October 2015	Construct 4 metre wide limestone road, 1.8 kms in length
Yaapeet South Road	100%	January 2016	January 2016	Construct 5 metre wide limestone road, 2.5 kms in length
Yarto Speed Road		June 2016		Construct 4 metre limestone road, 3.2 kms in length

Footpaths				
Project	% Completed	Start Date	Completion Date	Comments <i>Works part of contract</i>
Beggs Street Warracknabeal		June 2016		Section 1 - Construct 1.5 metre concrete footpath starting at O'Brien Street towards King Street (107 metres) Section 2 - Werrigar Street to O'Brien Street (72 metres)
Craig Avenue Warracknabeal		June 2016		Construct 1.5 metre concrete footpath starting at 80 Craig Avenue to Kokoda Avenue (137 metres)
Lyle Street Warracknabeal		May 2016		Construct 1.5 metre concrete footpath Molyneaux Street to Devereux Street (108 metres)
Lascelles Street Hopetoun	100%	March 2016	April 2016	Construct 1.5 metre concrete footpath from Police Station to Strachan Street (79 metres)

YARRIAMBIAK SHIRE COUNCIL

COUNCIL MEETING

MINUTES

25 MAY 2016

Footpaths				
Project	% Completed	Start Date	Completion Date	Comments <i>Works part of contract</i>
Cromie Street Rupanyup	100%	May 2016	May 2016	Construct 1.5 metre footpath from Woods Street going north (110 metres long)
Main Street Minyip	100%	April 2016	April 2016	Construct 1.5 metre footpath from 139 Main Street to Walking Track (53 metres)
O'Brien Street Warracknabeal		May 2016		Construct 1.5 metre concrete footpath from Campbell Street to Beggs Street (102 metres)
Phillips Street Warracknabeal		May 2016		Construct 1.5 metre concrete footpath on south side of Wheatlands Warehouse (32 metres)
Strachan Street Hopetoun	100%	March 2016	March 2016	Construct 1.5 metre concrete footpath from Toole Street to gate at Recreation Reserve (115 metres)
Hewitt/Bell Streets Warracknabeal				Pedestrian Crossing
Scott/Bell Streets Warracknabeal				Pedestrian Crossing
Scott/Milbourne Streets Warracknabeal				Pedestrian Crossing

Kerb & Channel				
Project	% Completed	Start Date	Completion Date	Comments <i>Works part of Contract</i>
Cromie Street Murtoa	100%	March 2016	April 2016	Renew kerb and 4 metre sealed road (Marma to Breen Street)
Dennys Street Hopetoun	100%	August 2015	September 2015	Willmores
Foundry Street Minyip		June 2016		Section 1 - Renew kerb and seal up to kerb (Main to Market Street) Section 2 - Renew kerb and seal to new kerb (Wimmera to Main Street)
McLeod Street Minyip	100%	May 2016	May 2016	Renew and add new kerb and seal to new kerb (Main to Market Street)
Stewart Street Rupanyup	100%	September 2015	February 2016	Renew kerb and underground drainage and seal up to new kerb

Bridges & Culverts and Drainage				
Project	% Completed	Start Date	Completion Date	Comments
Lloyd/Munro Streets Murtoa				Drainage – Install Pipe & Storm Water Pit
Gladstone Street Beulah				Renew Culverts
Lloyd/Munro Streets Murtoa				Upgrade Drainage System
Phillips Street Beulah				Renew Culverts

Drainage works Hopetoun and Rupanyup
Sign Replacement

10.6 Community Services Report – Prepared by Gavin Blinman

Kindergartens

We have 74 enrolments this year in our Kindergartens across the Shire; this is down on last year particularly at Murtoa where we had 17 enrolments last year and 10 this year. The challenge moving ahead is how we continue to offer services in small towns with declining numbers.

Environmental Health/ Local Laws – Prepared by Tim Rose & Greg Wilson

An egg safety forum was held in Bendigo to discuss and reveal some information regarding eggs and their link to salmonella poisoning. This workshop provided a solid foundation to further understand and manage the risks presented by this particular and common food item. The information obtained can be used to mitigate risks for food businesses. One complaint has been received over the period. While not an immediate risk to public health, this matter was investigated and educational materials were provided to the proprietors to prevent potential issues in the future. Inspections have recommenced to the normal frequency following the successful implementation of inspection software.

Blue Green Algae samples that were obtained from Lake Marma have revealed that the lake no-longer presents a risk to the local community. Media releases have been sent to all local papers to advise that water activities can return to normal. Concerns have been raised into the health of the Yarriambiack Creek. Council has sampled this waterway and we are currently waiting on the results of a bacterial analysis. Metal and chemical testing has not been conducted as it is a role for the EPA. It is also particularly expensive and there will be difficulty in conclusively determining a pollutant if one is present.

Wastewater permits and inspections have continued over the period. A number of progress inspections have been conducted and a final permit issued for a property in the North of the Shire.

School based immunisations have been completed across the Shire, with the latest sessions marking the completion of the second round as per the National Immunisation Schedule. A final session is booked for October to finish the program for 2016.

Issues at Livingstone Street in Warracknabeal have been resolved after a notice to remove items was issued.

Trapping of cats has slowed considerably not unusual for this time of year.

Only a couple of wandering dog issues both have been resolved through making owners aware of their responsibilities.

Pound very quiet for the month, only two dogs impounded and two surrendered.

Animal registrations sent out and now past due follow ups to be done upon the rangers return from leave

Aged and Disability – Prepared by Lisa Dunkley

Over the last month the HACC department staff have been busy attending forums about the up and coming MY Aged Care and what we need to know.

From the 1st of July 2016, HACC services will be funded and managed by the Australian Government through the Commonwealth Home Support Programme (CHSP). Reporting through the CHSP will require a report about client and service delivery outcomes through the Data Exchange reporting tool. Lisa and Alannah will be attending on how to use this.

Data for the first reporting period in the data exchange will be due by 30 January 2017.

The data exchange will replace the Minimum Data Set state reporting tool.

All office HACC Staff attended a ‘HACC quality improvement workshop’ which reviewed the journey including re-cap of 2012-2014 results in our region.

I will be providing training for all HACC CCW in Montessori in the later half of the year. Montessori is a one person centred approach to Education and Engagement and explores the way in which Montessori techniques can enrich the lives of people with dementia.

We have a new staff member – Alannah Milne replaces Michelle Hallam as Aged and Disability Officer in HACC.

Michelle’s service to the HACC Department was greatly appreciated and she will be sadly missed by all.

Volunteer Meals and Transport – Prepared by Alannah Milne

Transport

For the month of April 2016 the Shire completed 13 drives and had 2 cancellations.

This month, elderly were mainly accessing services in Horsham and Ballarat. The table below is a comparison over the last two years.

April 2016	13 drives, 2 cancellations
April 2015	12 drives, 3 cancellations

Meals on Wheels

April 2016	773 Meals
April 2015	979 Meals

Maternal and Child Health (MCH) – Prepared by Nanette Freckleton and Michelle Schilling

- Births up to 59 (as of May 12)
- Enrolments are at 71
- School immunisations second round completed
- Monthly baby immunisations well attended
- A number of catch up programs have started due to the changes 'No Jab No Play' and 'No Jab No Pay'
- 2 new mother groups have commenced. One in Warracknabeal and one in the North.
- Let's Read program going well and also a number of Volunteer readers come to Immunisation sessions.

Youth Report – Prepared by Murray McKenzie

- It was pleasing to see the Warracknabeal Skate Park host an event and be well supported by Councillors, and council staff. Special thanks to Graeme, Kylie and Terrence
- Members of the Yarriambiack Youth Action Council (YYAC) met Wednesday 11 May. Central to discussions were a review of the Young Achiever Awards and the Endoreic Film Festival on Saturday night 16 April, also Skate Event the following week 24 April. Very happy with the attendance, media coverage and the YYAC are certainly building the profile, report has been completed and sent in to DHHS
- FReeZA events are being discussed by local school groups with information to be more available after the next YYAC meeting, both Murtoa and Hopetoun College SRCs are committing to run one. Meetings and the relationships with the schools are excellent.
- The regional and rural development Co Design Program will see us work closely with the Hands on Learning programs at these schools to deliver on some small community projects.
- Gaming nights to begin in the next Month
- Dr. Maryanne Brown (Macpherson Smith Rural Foundation, and supported by a generous donation of \$100,000 from The Joyce Trust) is working on *Rural*

'Sporting Chance' a project to design and provide Vocational Education and Training (VET) scholarships to meet the specific needs of rural Victorian students/trainees. Maryanne thanked Yarriambiack Shire Council for providing access to its Youth Programs and staff for interviews.

During the project, young people and other education and training stakeholders from five communities (Dunolly, Warracknabeal, Casterton, Kyabram and Terang) have participated in a series of half hour group interviews in each town.

In each town the project team has conducted:

- an interview with young people currently in education or training
- an interview with young people not currently employed
- an interview with young people in paid work
- an interview with up to 8 other local people to hear about the opportunities for local study and training after young people leave school.

SHARE Program 'Sustainable Healthy Adaptable Resilient Engaged' – Prepared by Marianne Ferguson**Community Group Financial Assistance Scheme**

The Community Assistance Grants are now closed. These grants are to assist with the maintenance and capital improvements of community assets and events.

Garage Sale Trail

Yarriambiack Shire Council is again participating in Garage Sale Trail that will be held on October 22, 2016. The Garage Sale Trail aims to provide a platform for fundraising, reduce waste to landfill, enable community connections, inspire creativity and stimulate local economies.

Regional Arts Victoria Meet & Greet

A meet and greet was held at the Yarriambiack Shire Council Office on Thursday, 5 May that provided an opportunity for community groups and individuals to discuss project ideas and upcoming funding opportunities with representatives from Regional Arts Victoria. The event was well attended.

Rupanyup Signage

Advance awareness road signs for Woods' Farming and Heritage Museum have been approved by Vicroads. Once installed, the signage will hopefully attract additional travellers to stop at the site.

Warracknabeal Nick Cave

The Warracknabeal Arts Council is continuing to develop ideas to promote and celebrate musician Nick Cave. A tourism brochure is currently being developed.

Wimmera Mallee Tourism

The Wimmera Mallee region will be featured in an upcoming episode of Chanel 7's Travel Oz TV show. Filming has now been completed and will highlight Lake Lascelles, Yarriambiack Creek at Beulah, Brim Silo Art, Creekside Hotel and the Murtoa Stick Shed. The Strategic and Market Plan is currently being revised.

Yarriambiack Tourism

The Yarriambiack Tourism Meeting was held on May 2, at the Mallee Sunset Gallery in Rosebery. The Yarriambiack Tourism Facebook Page currently has 1,301 'Likes'. A brochure is currently being printed for the Murtoa Heritage Trails and Beulah town brochure.

10.7 Infrastructure Services Report – Prepared by Bernie Naylor

Beulah Swimming Pool

Council has been working with the Beulah Swimming Pool Committee in relation to preparing an application to heat the Beulah swimming pool and extend the period that it can be used from around three months to possibly six months.

The cost of the project is \$49,000 which I have allocated an amount of \$5,000 in Council's 2016- 2017 budget as a contribution towards the project.

There are some major issues at the Beulah Recreation Reserve where the swimming pool is located in relation to power supply, but the power system is adequate for the heating system to progress.

Levee Design - Warracknabeal

Price - Merritt were contracted by the Wimmera CMA to undertake surveys in the township of Warracknabeal regarding proposed levee heights and designs.

Markers have been placed at 10 locations around the Yarriambiack Creek to give residents an indication of the heights of proposed levees.

The CMA has now provided these designs to Council in relation to the location width and height of these levees.

James and I have provided feedback and comments to the CMA regarding the designs and will be meeting with the CMA on the 26th May to finalise these designs before going to the public for further comments.

Free Green Waste Day

Council will once again be conducting our annual Free Green Waste disposal days.

Following the success of the program in October 2015, Council has decided to conduct the free disposal over the period from the 24th May, 2016 to the 29th May, 2016 during the Transfer Stations normal hours of operation.

Extending the collection period was very well received by the rate payers and residents with all transfer stations kept very busy and also enables the elderly to make arrangements to have their Green Waste removed from their properties.

Drinking Fountains

GWM Water have made available to Council two Drinking Fountains for the townships of Minyip and Rupanyup.

Following consultation with the businesses and community representatives and also taking into consideration the availability of water services, the fountains will be

located near Cust Store in Rupanyup and the other one will be located in the new garden area next to the conveniences in Minyip.

Contract C206/2015 – Tipping Truck and Trailer

The Tipping Truck and Dog Trailer for the above mentioned contract was delivered to Council on the 11th May, 2016.

Attached for Council's information is a photo of the new Unit which will be based in Murtoa and driven by Tim Janetzki.



Asset Engineer – Mick Evans

- Started to develop the Capital works Program
- Complete a detailed survey as requested by VAGO
- Attend the Western Spatial working group meeting in Beaufort
- On-going setting up and implementing the GIS shared services data and associated websites
- In conjunction with the contractor help co-ordinate the renewal project of the lighting at Warracknabeal aerodrome

OH&S and Risk Management

- Assist with the review of Council's Drug & Alcohol Policy

Emergency Management

- Attended the Councils & Emergencies project workshop meeting in Horsham
- Attend the Wimmera Emergency Management Steering group meeting in Dimboola

Design Engineer – Joel Turner

- Under boring at Stewart Street Rupanyup complete.
- Sea Lake-Lascelles road is final rehab job and to be sealed this week.
- Footpath contract work beginning in Warracknabeal.
- School crossing at Hopetoun on Dodgshun Street complete.
- Kerbing at McLeod Street Minyip practically complete.
- Construction of open drain along Walter Street is complete next section along Stewart to begin 17/05.
- Capital Works final inspections have commenced.
- Dunmunkle Creek Culvert replacement tender document is being compiled.

OH&S Officer – Prepared by Bob Taylor

- I have just finished 2 days training with plant assessor.
- We have done a 2 day first aid course for outdoor staff.
- We are about to do spotters training for staff when working around power lines.
- Traffic management plans for construction jobs.

Technical Officer – Prepared by Nathan McLean

- Organise traffic counter installation and locations, download data and save report for future works.
- Submitted Local Government Infrastructure Projects (LGIP) final report with photos of completed projects.
- Discussions with Joel Turner and James Magee on the project agreement for the Bridges Renewal Programme funding we have received to upgrade the culverts on the Banyena Pimpinio road.
- Communicated with the Director of Infrastructure and Planning on remaining budget for footpath maintenance works. From this we have identified some footpath works to be completed by the end of June.
- The Infrastructure Services manager and I met with Brad Sward and Shawn Stapleton from Porter Plant to discuss lease vehicle options for our fleet.
- Met with Mark Johnston and Baden Jones from Plant Assessor to do some online training followed by field assessments on graders.
- Installed a 450mm backflow prevention valve as a test case. We had performance issues with the original product.
- Submitted proposed locations of towers to Peter Ziebell for the Mobile Black Spot Program
- Submitted aerodrome information to Jo Gellatly from District 17 fire brigade headquarters to update their records.
- Setup some traffic management plans for upcoming footpath maintenance works.

Technical Officer – Tony Brennan

- Continue with Inspections of Council Building sewerage connection progress in Rupanyup
- Process as required various stormwater discharge point requests
- Update vehicle plant list, checklist and report template with vehicle and plant changeovers
- Attend training for the use of Plant Assessor for Major and Minor plant inspections
- Process Dial Before You Dig enquiries for any of the above permits that maybe required
- Attend OH&S information session for Saleyards at the Bendigo Livestock Exchange

Warracknabeal Regional Livestock Exchange

- Sale held 13 April - 4,905 head
- Sale held 27 April - 5,980 head
- Sale held 11 May - 5,219 head

Caravan Park Occupancy March 2016

State	Warracknabeal	Hopetoun	Murtoa
VIC	191	291	73
NSW	15	3	18
WA	0	1	0
QLD	8	0	21
SA	21	2	38
NT	0	0	0
ACT	2	0	2
TAS	2	0	6
International	0	0	0
Permanents	(30 x 7) = 210	(31 x 0) = 0	(30 x 3) = 90
Monthly Occupancy	448	297	246

Moved Cr T Grange seconded Cr L Woods that standing orders be suspended at 10:30am.

Carried

Moved Cr H Ballentine seconded Cr K Zanker that standing orders be resumed at 10:45am.

Carried

10.8 Community Projects Report – Prepared by Dennis Smith

Country Football and Netball Program 2013/2014 and Putting Locals First Program

The Hopetoun Community Centre project is progressing very well with painting underway and front ramp poured. Plumbing and electrical fit-out will commence when the painting is completed.

Anticipated project completion is early June 2016.

Country Football and Netball Program 2014/2015

Plastering, painting, tiling, floor coverings, electrical fit-out and plumbing fit-out have all been completed for the Minyip Football and Netball Facilities Upgrade project.

The netball court re-sheeting and line marking have been completed with just a small corner section yet to be asphalted.

It is anticipated the project will be fully completed in the first week of June.

Country Football and Netball Program 2015/2016

An application for funding to construct a new netball/female change room, incorporating showers, toilets and washbasins at Anzac Park has been submitted requesting a grant of \$100,000 for a total project cost of \$153,970.

Community Facility Funding Program 2015/2016 – Planning

Please refer to “Reports for Decision” section.

Local Facilities for Local Clubs Program

This grant has now been acquitted for the construction of a cricket practice facility at the Minyip Recreation Reserve..

Community Sports Infrastructure Fund 2016/2017 – Cricket Facilities

The application to construct an additional water storage dam to irrigate Anzac Park has not been successful. Alternative funding avenues will now be investigated.

Community Sports Infrastructure Fund 2016/2017 – Minor Facilities

A combined application for improved lighting at the Brim Memorial Bowling Club and new in-ground, fully automated, sprinkler system for the Brim Recreation Reserve has been approved under this program, with a grant of \$85,200 for a total project cost of \$127,813. Works are to commence in the next Financial Year.

Regional Jobs and Infrastructure Fund

Two projects have been approved under this program.

The first project is the construction of 5 walking tracks across the Shire with a grant of \$112,200 for a total project cost of \$146,200. The tracks are located in Murtoa; 2 in Minyip, Woomelang and Yaapeet. Rabl Park (Murtoa) and the 2 tracks in Minyip are completed. The Woomelang track has commenced with timing for Yaapeet yet to be determined.

The second project is streetscape works in Brim and Minyip with a grant of \$130,500 for a total project cost of \$174,000. The Brim works are now underway and the Minyip planning well advanced.

Timing for the above works is completion in December this year.

Community Shade Grants Program

An application (on behalf of the Redda's Park Trustees) for a shade structure over the playground at Redda's Park, Brim, was submitted and has been successful in gaining funding of \$16,300 for a total project cost of \$19,000.

The poles have been installed and it is expected the main shade structure will be in place by the end of May.

Transport Investing in Regions Initiative

A grant of \$15,000 has been received under this program for works at the Patchewollock railway precinct. Work will include construction of a walking track, re-surfacing the car park and installation of interpretive signage.

We are awaiting lease arrangements from VicTrack for the walking track area.

Restoring Community War Memorials and Avenues of Honor Program

The Anzac Park Memorial Gates Restoration project is complete and acquittal documentation will now be prepared.

Other Work Undertaken

The application submitted under the Better Fishing Fund to install a pontoon at the Brim Weir Pool has been partially successful with funding of \$12,520 (20% of the grant requested) offered. Further funding sources will be investigated.

Assisting the Warracknabeal Men's Shed with several grant applications for funding to extend the size of their current premises.

Assisting the Hopetoun Recreation Reserve develop an application to install upgraded lighting for the oval, with a view to submitting the application under the next round of the Country Football & Netball Program.

11 REPORTS FOR DECISION

11.1 Finance Report – Prepared by Anita McFarlane

Recommendation

The Finance Report as at April 2016 be received.

Moved Cr L Woods seconded Cr K Zanker that Finance Report as at April 2016 be received.

Carried

11.2 Revenue Report – Prepared by Chantelle Pitt

Recommendation

The Revenue Report as at May 2016 be received.

Moved Cr G Massey seconded Cr T Grange that Revenue Report as at May 2016 be received.

Carried

11.3 Draft Budget 2016/2017 – Prepared by Anita McFarlane

Under the provisions in the Local Government Act 1989, Council is required to prepare and adopt an annual budget for each financial year. The budget is required to include certain information about the rates and charges that council intends to levy as well as a range of other information required by the Regulations which support the Act.

The draft Budget 2016/2017 is presented to Council for consideration.

Recommendation

Council, having prepared the Draft 2016/2017 Budget in accordance with Section 127 of the Local Government Act 1989, gives public notice in accordance with section 129 of the Act, to advertise in local newspapers for a minimum 28 day period and make the 2016/2017 Draft Budget available in Councils Offices in Warracknabeal and Hopetoun and on the Council's website.

Moved Cr T Grange seconded Cr G Massey that Council, having prepared the Draft 2016/2017 Budget in accordance with Section 127 of the Local Government Act 1989, gives public notice in accordance with section 129 of the Act, to advertise in local newspapers for a minimum 28 day period and make the 2016/2017 Draft Budget available in Councils Offices in Warracknabeal and Hopetoun and on the Council's website.

Carried

11.4 Yarriambiack Shire Council Sport & Recreation Strategy – Prepared by Dennis Smith

Council's previous Sport & Recreation Strategy was compiled in 1997 and we received a grant of \$30,000 through the Community Facility Funding Program 2015/16 – Planning to develop a new Shire wide Sport & Recreation Strategy. Wendy Holland from communityvibe was appointed as the consultant to develop the new Strategy in consultation with all stakeholders and a Steering Committee comprised of Cr. Massey, Cr. Grange, James McFarlane (community representative), Bernie Naylor and myself.

Council advertised the draft Sport & Recreation Strategy 2016/25 for community feedback with a closing date of 29th April 2016 for comments. No public feedback was received over the four week period and it is now proposed that the draft Strategy be adopted.

Recommendation

That the Sport & Recreation Strategy 2016/25 as presented in draft form now be adopted as the Yarriambiack Shire Council Sport & Recreation Strategy 2016/25.

Moved Cr G Massey seconded Cr T Grange that the Sport & Recreation Strategy 2016/25 as presented in draft form now be adopted as the Yarriambiack Shire Council Sport & Recreation Strategy 2016/25.

Carried

Moved Cr T Grange seconded Cr G Massey that Council write to Wendy Holland, Managing Director of Communityvibe and pass on Council's gratitude and thank her for her services in relation to the Yarriambiack Shire Council Sports & Recreation Strategy 2016/25.

11.5 Community Group Financial Assistance Scheme (May 2016) – Prepared by Marianne Ferguson

Council received 21 applications for funding under the Community Group Financial Assistance Scheme. The total amount requested by the various organisations is \$9854.50. Summary of applications received:

NAME OF ORGANISATION	DESCRIPTION OF REQUEST	FUNDING REQUESTED
Beulah Business & Information Centre	Assist in the purchase and installation of dishwasher for community kitchen	\$500.00
Beulah Landcare Group	Purchase a new garden shed for the Community Garden (Storm destroyed the existing one)	\$500.00
Beulah Memorial Park Trustees	New locks for buildings at the Recreation Reserve	\$500.00
Brim Golf Club Inc	To purchase new flags (9x) and ball washer	\$500.00
Brim Lions	To assist with the building and erection of the Equipment Shed	\$500.00
Hopetoun Cricket Club	Contribution to provide a rural pipeline supply to Hopetoun Recreation Reserve	\$500.00
Hopetoun CWA Branch	Purchase filing cabinet, card table and crock pot	\$500.00
Hopetoun Golf Club	Purchase seed to re-seed the remaining fairways at the Golf Course	\$500.00
Hopetoun Landcare Group	To engage the general community and youth in planting trees/shrubs and beautifying the lakes, schools and surroundings	\$500.00
Hopetoun Table Tennis Club	Purchase of a table tennis table	\$500.00
Hopetoun Team Outpatients Cycle Club	Purchase of light to highlight Team 112 so riders can find the support crew. Murray 2 Moyne Relay	\$350.00
Minyip Progress Association	Purchase of garden beds to complement Emma's Precinct Project	\$424.50
Minyip Shocking Arts Collective	Purchase materials to repair/repaint the interior of window display area to display member's work. To replace the ceiling hangings with suitable material	\$500.00
Warracknabeal & District Band	To assist with the running of the bands 130 th year celebrations and concert at the town hall	\$500.00
Warracknabeal Boxing Gym	To pay for 2 qualified coaches to undertake a first aid course	\$350.00
Warracknabeal Golf Bowls Club	Purchase of a new Bowling Arm to keep older bowlers in the game	\$230.00
Warracknabeal Golf Club	Materials to improve the gardens and surrounds of the Golf Course	\$500.00
Warracknabeal Hockey Club	Development and equipment for our Under 12's program	\$500.00
Warracknabeal Men's Shed	Purchase new Electric Drop Saw	\$500.00
Woomelang & District Development Association	Signage for Cronomby Tanks – Free Camping area	\$500.00
Woomelang & District Historical Society	Signage for historical buildings and sites around town	\$500.00
		\$9,854.50

Recommendation

That Council approve the above nominated projects under the 2015/2016 Community Group Financial Assistance Scheme.

Moved Cr L Woods seconded Cr T Grange that Council approve the above nominated projects under the 2015/2016 Community Group Financial Assistance Scheme.

Carried

11.6 Request for the Unused Road Reserve off Kewell North School Road be discontinued – Prepared by Nathan McLean

Council has been made aware by Renewable Energy Systems (RES) that there is a road corridor running north for 640m from the Kewell North School Road (east side of crown allotment 213A).

The Murra Warra Wind Farm development has identified the nearby area for tower 228 to be erected therefore requiring discontinuing this road reserve to the general public. (Refer to attached map).

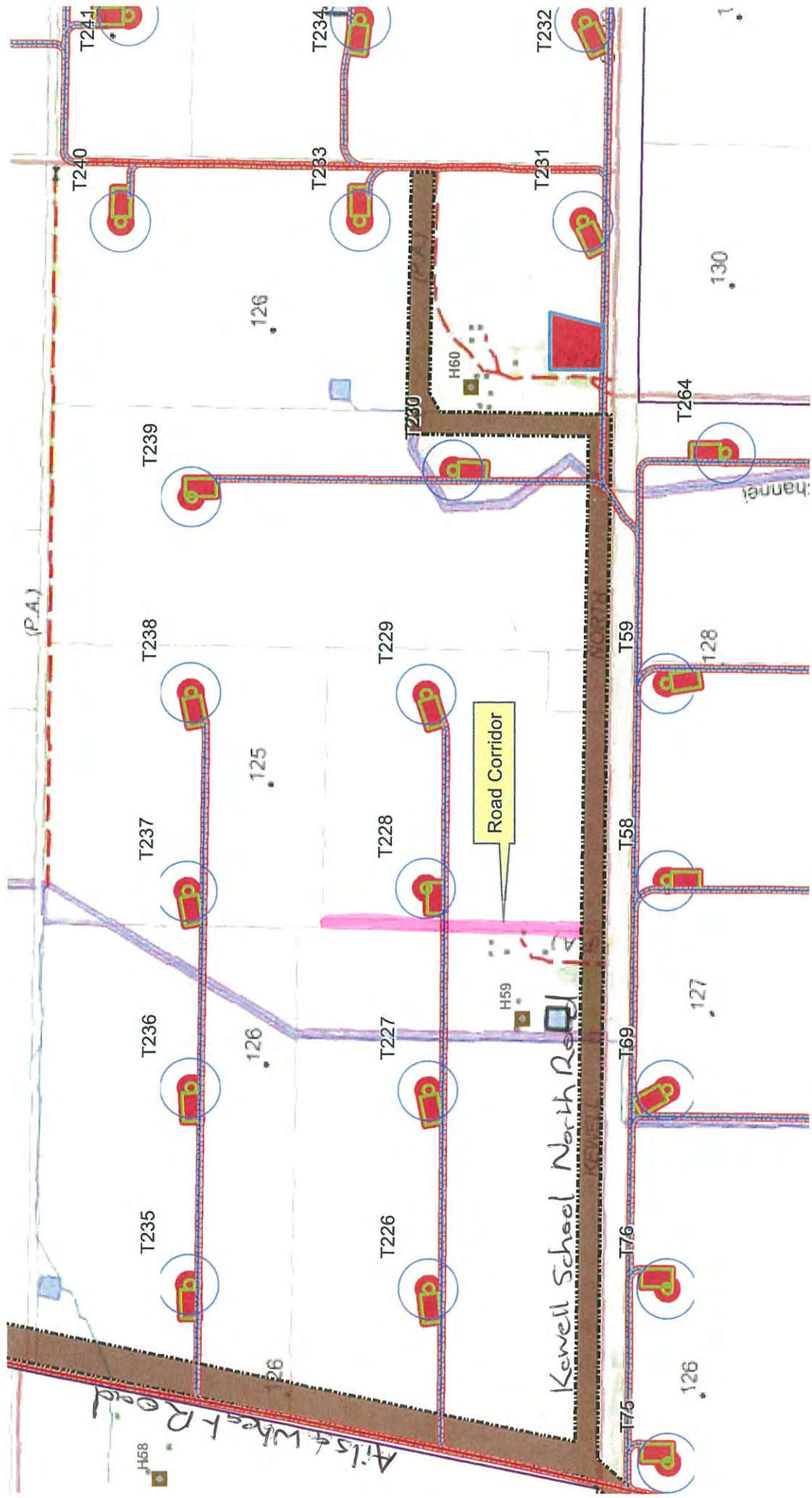
The landowner of allotments 213A and 219B currently crops across this road reserve.

Recommendation

That Council follow due process and advertise to the public that the unused road reserve off the Kewell School North road be discontinued. Sections 43 and 44 of the Planning and Environment Act 1987 gives power to Local Government to discontinue a road by a notice published in the Government Gazette and then given back to the crown.

Moved Cr H Ballentine seconded Cr K Zanker that Council follow due process and advertise to the public that the unused road reserve off the Kewell School North road be discontinued. Sections 43 and 44 of the Planning and Environment Act 1987 gives power to Local Government to discontinue a road by a notice published in the Government Gazette and then given back to the crown.

Carried



11.7 Section 193 Entrepreneurial Powers Incorporation of Rural Council's Victoria – Prepared by Ray Camping

As discussed at the Council Forum on Wednesday, 27 April 2016 Rural Councils Victoria (RCV) is an unincorporated organisation which represents the interests of rural Councils within Victoria and currently has 38 members, of which Council is one.

The RCV's work includes:

1. providing opportunities for networking and professional development;
2. activities directed at ensuring the sustainability of rural councils; and
3. activities to assist rural communities to remain sustainable.

This occurs via a number of mechanisms, including the:

1. organisation of forums and conferences for member councils;
2. engagement of forums and conferences for members councils;
3. applying for Government grants, particularly through Regional Development Victoria.

Given that the RCV is not a separate legal entity, it conducts its business through a 'Secretariat'. This involves the Executive appointing a willing council member to, essentially, act as its agent, providing administrative support and entering into contract on its behalf.

Incorporation of RCV

As the RCV is currently unincorporated, Council is, with all other member councils, exposed to liability in respect of its operations.

To address this, and to enable the RCV to operate with greater independence and ease, it is proposed to incorporate the RCV as an incorporated association. It will be called 'Rural Councils Victoria Incorporated' and will operate in accordance with the draft Rules, attached to this report as 'Attachment A'.

The benefits of the RCV being incorporated include that it:

1. is recognised as a separate legal entity, with protection from debts for members and perpetual succession;
2. has the power to own and hold property, enter into contracts and otherwise act as any other legal entity would;
3. cannot distribute profit to its members;
4. must operate in accordance with a set of rules, including a statement of purpose – being the draft Rules attached to this report as 'Attachment A'; and
5. is operated by a Committee of Management and a Secretary, which are responsible for ensuring that all legislative obligations are complied with, and purposes are being achieved.

The RCV fulfils a number of functions that are important to rural councils in Victoria. Perhaps most importantly, it currently has responsibility for applying for Government grants, particularly through Regional Development Victoria, which are of benefit to rural councils.

It will be important that the RCV is incorporated to enable it to carry on those functions with greater independence and flexibility while still being subject to the views of its members councils.

It is not expected that the manner in which the RCV operates will be different from its current operations, although election to the Committee of Management will be based on slightly different zones, as set out in the draft Rules attached to this report as 'Attachment A'.

Exercise of Entrepreneurial Powers

As council will, if in favour of this proposal, be participating in the formation and operation of a separate legal entity, it is required, in accordance with s. 193 of the Local Government Act 1989 (LG Act).

Council is advised that:

1. the total investment involved in Council's participation in the formation of Rural Councils Victoria Limited is:

\$0

Council will be required to continue paying membership fees, as fixed by the Committee from time to time, but will not be required to invest anything in respect of the incorporation; and

2. the total risk involved in Council's participation in the formation of Rural Councils Victoria Limited is:

\$0

Any liability for the activities of Rural Councils Victoria Limited will attach to it, not to the individual members.

So, the total investment and risk exposure will be \$0, meaning that Council is not required to take any further action in relation to this matter under s. 193(5c) of the Local Government Act 1989.

Next Step

If the RCV continues operating as an unincorporated association, there is a risk that its individual members, including Council, will be exposed to liability if the RCV fails to properly conduct its business. Furthermore, it will be unable to enter into contractual arrangements on its own behalf – instead relying on the Secretariat council to do so.

It is therefore recommended that Council accepts the analysis of Council's investment and risk exposure and votes in favour of the RCV being incorporated on the basis of the draft Rules attached to this report as 'Attachment A'.

It is proposed that a vote of all current members will be held at the next meeting of RCV to be held on 10 June 2016. The vote will, if a majority is in favour, authorise Jim Nolan, Chief Executive Officer of Pyrenees Shire Council (the current Secretariat council), to apply to the Register of Incorporated Associations for the incorporation of RCV and approve the draft Rules.

Recommendation

That:

1. Proposed incorporation of Rural Councils Victoria does not involve an investment and/or risk exposure that exceeds the thresholds set out in s 193(5C) of the Local Government Act 1989;
2. Council votes in favour of authorising Jim Nolan, Chief Executive Officer of Pyrenees Shire Council, to apply to the Registrar of Incorporated Associations for the incorporation of Rural Councils Victoria Incorporated; and
3. Council approves the draft Rules attached to this report as 'Attachment A' as the Rules for Rural Councils Victoria Incorporate; and
4. Council authorises CEO Ray Campling to vote on Council's behalf on this matter, in accordance with this resolution, at the meeting of RCV to be held on 10 June 2016.

Moved Cr T Grange seconded Cr K Zanker that:

1. **Proposed incorporation of Rural Councils Victoria does not involve an investment and/or risk exposure that exceeds the thresholds set out in s 193(5C) of the Local Government Act 1989;**
2. **Council votes in favour of authorising Jim Nolan, Chief Executive Officer of Pyrenees Shire Council, to apply to the Registrar of Incorporated Associations for the incorporation of Rural Councils Victoria Incorporated; and**
3. **Council approves the draft Rules attached to this report as 'Attachment A' as the Rules for Rural Councils Victoria Incorporate; and**
4. **Council authorises CEO Ray Campling to vote on Council's behalf on this matter, in accordance with this resolution, at the meeting of RCV to be held on 10 June 2016.**

Carried

Attachment A**Maddocks**

Lawyers
 140 William Street
 Melbourne Victoria 3000 Australia
 Telephone 61 3 9258 3555
 Facsimile 61 3 9258 3668
 info@maddocks.com.au
 www.maddocks.com.au
 DX 259 Melbourne

Email Letter

From Kate Oliver	Email kate.oliver@maddocks.com.au
Direct 03 9258 3333	
Partner Melanie Olynyk	
To Jim Nolan Chief Executive Officer And Lenny Jenner Chief Executive Officer	Organisation Pyrenees Shire Council Borough of Queenscliffe
	Email jim.nolan@pyrenees.vic.gov.au lenny.jenner@queenscliffe.vic.gov.au

Our Ref MSB:KZO:6707455

Dear Jim

Structure of Rural Councils Victoria

Thank you for your instructions to prepare draft Rules for Rural Councils Victoria Incorporated (RCV Inc).

We now attach for your consideration the draft Rules.

Draft Rules

In relation to the draft Rules, we note the following:

1. The draft Rules are based on the Model Rules released by Consumer Affairs Victoria and are varied to address the specific matters required by RCV Inc.
2. We have taken the purposes of RCV Inc from RCV's mission and objectives as stated on its website. We suggest reviewing these purposes to ensure that they accurately reflect the intended purposes of RCV Inc.
3. Rule 7 of the draft Rules requires RCV Inc to have at least five members. This is not a statutory requirement and may be varied if RCV sees fit to do so.
4. Rule 31(1) of the draft Rules provides that a special general meeting must be convened by the Committee upon request by at least 10 per cent of all members of RCV Inc. This threshold can be varied by RCV if it would prefer, for example, that a request must be made by more than four member councils.
5. Rule 31(2) of the draft Rules requires the Committee to convene a general meeting of RCV Inc (other than the annual general meeting) at least once in each year. This is intended to meet the requirements of the *Associations Incorporation Reform Act 2012 (Act)*.

{6707455: 16025526_1}

Interstate offices
 Canberra Sydney
 Affiliated offices around the world through the
 Advcc network - www.advcc.com

Maddocks

6. Rule 34 of the draft Rules provides for the appointment of delegates by each member council, who will exercise the vote of their respective member councils at general meetings. The appointment of those delegates is to be notified to the Committee and remains in place until the relevant member council notifies the Committee of a new appointment.
7. We have retained provision for the appointment from the Committee of a Secretary and Treasurer (as well as a Chairperson). RCV Inc is not required to appoint a Treasurer but may prefer to do so. We think that the Treasurer's duties can be carried out by the Secretary who may, in turn, instruct the 'secretariat' council to undertake them on the Secretary's behalf.
8. We have provided for the election of Chief Executive Officer members and Councillor members to the Committee in Division 3 of Part 5 of the draft Rules. We think that this reflects your instructions but suggest that Division 3 is carefully reviewed to ensure that it meets RCV Inc's requirements. We suggest paying particular attention to the timelines set out in Division 3 of the draft Rules.
9. Rule 57 of the draft Rules provides that the Committee will endeavour to meet monthly. This can be varied to such frequency as RCV Inc requires.
10. Rule 67 of the draft Rules provides for resolutions of the Committee to be made by way of email voting. This approach can be somewhat contentious and, as such, we have limited it to resolutions that are required as a matter of urgency and cannot wait until the next Committee meeting. We suggest using this approach only when absolutely necessary.
11. Schedule 1 to the draft Rules lists all members of RCV Inc, being each of the 38 rural councils. Schedule 2 to the draft Rules will list the councils in each of the Regional Development Victoria regions and will need to be populated before the draft Rules are adopted.
12. We are still addressing the formatting of the draft Rules as this has taken longer than we anticipated. Accordingly, some of the numbering and cross-referencing is currently incorrect. This is of no real consequence for the Executive Committee's initial consideration of the draft Rules and we will provide a fully formatted copy of the draft Rules tomorrow.

Incorporation Process

In order to incorporate as an association, it will be necessary for a majority of the members (ie more than half of the 38 rural councils) to:

1. authorise a person (eg you) to apply to the Registrar of Incorporated Associations (Registrar) for incorporation; and
2. approve the draft Rules.

According to s 5(2) of the Act, this must occur at a meeting of the members held at least 21 days after notice of the meeting is given to members.

The result is that incorporation cannot occur until a meeting of the members (ie the rural councils) is held to consider the matter and a majority of all members votes in favour of incorporation and the draft Rules. We understand that RCV's annual conference is due to be held in May. This will be a good opportunity for the vote to be taken. RCV will need to ensure that the members are provided with notice, at least 21 days before the annual conference, that incorporation will be considered and voted on at that meeting.

Once that has occurred, the application for incorporation can be lodged and RCV Inc incorporated.

The existing members of the Executive Committee will become the first members of RCV Inc's Committee until an election, in accordance with the draft Rules, can be held.

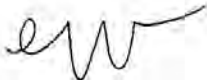

Maddocks

We also confirm that we will prepare a template report to be provided to the member councils for their consideration as required by s 196 of the *Local Government Act 1989*. This will be available for your consideration shortly.

Please carefully consider the attached draft Rules to ensure that they RCV's requirements. If they do, they can be prepared in final form ready for lodgement after the annual conference.

If you have any queries in the meantime, please contact Kate Oliver on 03 9258 3333 or kate.oliver@maddocks.com.au.

Yours sincerely



Melanie Olynyk
Partner

11.8 Municipal Rate Relief – New Houses Policy - prepared by Chantelle Pitt

The objective of this policy is to encourage and provide incentive for the construction of new (or relocated) residential housing developments within the Yarriambiack Shire Council which include sustainable water and energy initiatives.

The freezing of municipal rates for new residential housing developments for a period of three years would assist owners with reduced rates for this period.

Recommendation

That Council adopt the reviewed and updated Municipal Rate Relief – New Houses Policy as presented.

Moved Cr A McLean seconded Cr G Massey that Council adopt the reviewed and updated Municipal Rate Relief – New Houses Policy as presented.

Carried

OBJECTIVE

The Yarriambiack Shire Council wishes to encourage and provide incentive for the construction of new (or relocated) residential housing developments within this Shire which include sustainable water and energy initiatives.

The freezing of municipal rates for new residential housing developments for a period of three years would assist owners with reduced rates for this period. The new housing developments may be in a rural or urban area.

POLICY

The Yarriambiack Shire Council will base its rate calculation on the following:

$$\frac{\text{Capital Improved Value} - \text{Value of New Residential Housing Development}}{\text{Capital Improved Value}} = \text{Rate Reduction}$$

This rate calculation will be applied for a period of three years after the date of issue of Certificate of Occupancy for the new residential housing development.

At the end of the three year period the annual rate charge will be based on Council's Capital Improved Value, which will include the new housing development.

This policy does not apply to temporary housing or sheds.

Note:

The rate reduction is only applicable to the annual rate charge. All other charges associated with the property (ie garbage service and recycling charges) will be as stated in Council's Annual Rate Declaration.

REQUIREMENTS

The residence must comply with three of the five requirements, with the first one being compulsory to be eligible for municipal rate relief under this policy.

- Provision of a rain water tank with a minimum capacity of 13,000 litres with the entire residence to be plumbed to have the option of rain water or town supply (dual plumbing);
- Residence to be fitted with a solar hot water service or a heat pump hot water system;
- An EPA approved aerated wastewater treatment system for reuse to be installed;
- Residence to be fitted with photo voltaic panels of minimum 1kw capacity with connection to state power grid;
- Residence to be fitted with approved grey water reuse and irrigation system.
- Achieve a 7 star energy rating in accordance with provisions of Building Code of Australia Part 3.12.

IMPLEMENTATION

This policy is applicable to housing developments with an occupancy certificate issued on or after the date of adoption of this policy. All applications must be made within one year from the date the occupancy certificate was issued. This policy supersedes all previously adopted Municipal Rate Relief – New Houses policies.

Council Adoption Date	25 May 2016
Minute No	
Review Date	25 May 2018
Officer Responsible	Chief Executive Officer



MUNICIPAL RATE RELIEF (NEW HOUSES) APPLICATION FORM

Return to: Revenue Officer
Yarriambiack Shire Council
PO Box 243
WARRACKNABEAL VIC 3393
Fax: 03 5398 2502

Property Owner(s) Details:

Name: _____
Postal Address: _____
Telephone Number: _____

Property Details:

Assessment Number (Shown on rates notice): _____
Current Address of Property: _____

Occupancy Certificate Number: _____

Date Occupancy Certificate Issued: _____

REQUIREMENTS

To be eligible for municipal rate relief, the residence must comply with three of the five requirements, with the first one being compulsory:

1. Provision of a rain water tank with a minimum capacity of 13,000 litres with the entire residence to be plumbed to have the option of rain water or town supply (dual plumbing)
2. Residence to be fitted with a solar hot water service or a heat pump hot water system
3. An EPA approved aerated wastewater treatment system for reuse to be installed
4. Residence to be fitted with photo voltaic panels of minimum 1kw capacity with connection to state power grid
5. Residence to be fitted with approved grey water reuse and irrigation system. Permit No. _____
6. Achieve a 7 star energy rating in accordance with provisions of Building Code of Australia Part 3.12.

Signature: _____

Date: _____

Office Use Only

12 GENERAL BUSINESS (including strategic direction and specific issues)

Cr A McLean expressed his personal disappointment with the service of the National Broadband Network. Cr A McLean still waits for connection after numerous communication.

Yarriambiack Council in conjunction with Horsham Paws have received a grant for \$32,000 to assist healthcare card holders and pensions with the de-sexing and micro-chipping of cats and dogs.

Minyip Police Station – Senior Constable Michael Bauldock has been appointed and will commence on 30 May 2016.

The police command hopes to start building a new police complex in Murtoa in the next six months.

Cr T Grange thanked everyone for their support in relation to the Minyip and Murtoa Police Station matters.

13 CLOSED SESSION**14 MINUTES FROM MEETINGS****15 ATTACHMENTS / REPORTS**

Planning Permit Activity Report for April 2016
Rates Report – May 2016
Income Statement by Resources for April 2016
Income Statement by Department for April 2016
Capital Expenditure for April 2016
Balance Sheet as at 31 April 2016.

16 NEXT MEETING

The next meeting of Council will be held on Wednesday, 22 June 2016 at 9:30am at Warracknabeal.

17 CLOSE 11:30am _____ **Mayor**

YARRIAMBIACK SHIRE COUNCIL

INCOME STATEMENT BY RESOURCES FOR APRIL 2016

	2014/2015 Budget	2014/2015 Actuals	April Actuals	2015/2016 Budget	YTD Actuals	Forecast	YTD Variance	YTD % Variance
Income								
Asset Disposal & Fair Value Adjustments	\$ (400,000)	\$ (375,190)	(567)	(297,800)	(287,268)	(312,800)	(10,532)	4%
Contributions, Donations & Reimbursement	\$ (309,839)	\$ (264,320)	(33,005)	(235,911)	(181,955)	(230,461)	(53,956)	23%
Government Grants & Charges	\$ (9,225,566)	\$ (11,155,366)	(140,791)	(8,870,887)	(6,687,164)	(7,432,084)	(2,183,723)	25%
Interest Income	\$ (139,921)	\$ (138,836)	(3,829)	(107,021)	(71,138)	(77,021)	(35,883)	34%
Rates & Charges	\$ (10,594,460)	\$ (10,827,963)	(48,091)	(11,314,254)	(11,372,001)	(11,323,417)	57,747	(1%)
Sale Proceeds - Contra Sales	\$ -	\$ -	-	-	(173)	(173)	173	0%
User Charges, Fees & Fines	\$ (1,051,752)	\$ (1,163,322)	(93,217)	(1,028,072)	(809,640)	(1,115,849)	(218,432)	21%
Income Total	\$ (21,721,538)	\$ (23,924,996)	(319,500)	(21,853,945)	(19,409,338)	(20,491,805)	(2,444,607)	11%
Expenditure								
Asset Disposal & Fair Value Adjustments	\$ 300,412	\$ 944,791	-	309,424	-	309,424	309,424	0%
Bad & Doubtful Debts	\$ -	\$ 36,998	-	-	-	-	-	0%
Contributions & Donations	\$ 892,342	\$ 851,753	18,960	977,245	754,466	809,261	222,779	23%
Depreciation Amortisation & Impairment	\$ 6,251,313	\$ 6,568,314	-	6,438,426	-	6,438,426	6,438,426	100%
Employee Costs	\$ 7,637,865	\$ 7,403,109	531,980	7,770,428	6,097,407	7,273,720	1,673,021	22%
Finance Costs	\$ 72,866	\$ 108,979	0	123,396	50,208	68,396	73,188	59%
Materials	\$ 5,215,260	\$ 4,955,062	122,543	4,633,460	3,705,401	4,725,957	928,059	20%
Other Expenses	\$ 1,357,868	\$ 1,333,339	29,649	1,299,629	1,082,067	1,342,183	217,562	17%
Expenditure Total	\$ 21,727,926	\$ 22,202,345	703,132	21,552,008	11,689,550	20,967,367	9,862,458	46%
Total	\$ 6,388	\$ (1,722,651)	383,632	(301,937)	(7,719,788)	475,562	7,417,851	

YARRIAMBIACK SHIRE COUNCIL

INCOME STATEMENT BY DEPARTMENT FOR APRIL 2016

	2014/2015 Budget	2014/2015 Actuals	April Actuals	2015/2016 Budget	YTD Actuals	Forecast	YTD Variance	YTD % Variance
Income								
Community Services	\$ (1,974,579)	\$ (2,215,881)	(154,748)	(1,863,121)	(1,881,337)	(2,126,449)	18,216	(1%)
Corporate Services	\$ (14,552,348)	\$ (17,406,375)	(64,167)	(15,348,378)	(12,320,055)	(12,562,198)	(3,028,323)	20%
Economic Development	\$ (988,531)	\$ (1,047,968)	(44,645)	(268,264)	(457,983)	(497,651)	189,719	(71%)
Engineering	\$ (2,725,221)	\$ (1,476,163)	(14,990)	(2,749,800)	(3,155,942)	(3,406,221)	406,142	(15%)
Recreation & Culture & Leisure	\$ (264,361)	\$ (486,460)	(10,181)	(360,970)	(323,241)	(570,913)	(37,729)	10%
Regulatory Services	\$ (157,739)	\$ (160,509)	(24,781)	(147,663)	(182,819)	(201,845)	35,156	(24%)
Waste & Environment	\$ (1,058,759)	\$ (1,131,638)	(5,987)	(1,115,749)	(1,087,962)	(1,126,528)	(27,787)	2%
Income Total	\$ (21,721,538)	\$ (23,924,996)	(319,500)	(21,853,945)	(19,409,338)	(20,491,805)	(2,444,607)	11%
Expenditure								
Community Services	\$ 2,750,681	\$ 2,653,577	169,011	2,784,790	2,132,390	2,892,241	652,400	23%
Corporate Services	\$ 1,928,109	\$ 1,652,233	74,943	1,971,414	1,274,714	1,750,237	696,700	35%
Economic Development	\$ 1,020,560	\$ 1,248,749	62,603	772,285	626,201	823,823	146,084	19%
Engineering	\$ 11,069,421	\$ 11,838,719	228,954	10,954,703	3,872,395	10,561,536	7,082,308	65%
Governance	\$ 1,012,911	\$ 865,027	55,714	1,080,027	801,323	917,406	278,704	26%
Recreation & Culture & Leisure	\$ 1,377,604	\$ 1,292,057	8,182	1,344,019	909,730	1,409,671	434,289	32%
Regulatory Services	\$ 663,416	\$ 663,719	18,138	662,004	469,001	610,140	193,003	29%
Waste & Environment	\$ 1,905,224	\$ 1,988,264	85,587	1,982,766	1,603,797	2,002,313	378,969	19%
Expenditure Total	\$ 21,727,926	\$ 22,202,345	703,132	21,552,008	11,689,550	20,967,367	9,862,458	46%
Total	\$ 6,388	\$ (1,722,651)	383,632	(301,937)	(7,719,788)	475,562	7,417,851	

**YARRIAMBIA SHIRE COUNCIL
CAPITAL EXPENDITURE FOR APRIL 2016**

	2014/2015 Budget	2014/2015 Actuals	April Actuals	2015/2016 Budget	YTD Actuals	Forecast	YTD Variance	YTD % Variance
01929 - Administration - Capital								
0900 - Building Capital Works	\$ 5,000	\$ 17,910	0	30,000	28,021	28,020	1,979	7%
0910 - Furniture & Equipment Capital Works	\$ 2,000	\$ -	0	2,060	0	0	2,060	100%
01939 - Asset Management - Capital								
0920 - Computer / IT Capital Works	\$ -	\$ 6,528	0	39,500	37,065	39,500	2,435	6%
01949 - Information Technology - Capital								
0920 - Computer / IT Capital Works	\$ 20,000	\$ 6,258	0	20,000	1,636	20,000	18,364	92%
02919 - HACC Administration - Capital								
0910 - Furniture & Equipment Capital Works	\$ -	\$ 2,800	0	0	3,436	3,436	(3,436)	0%
0920 - Computer / IT Capital Works	\$ -	\$ -	0	0	0	0	0	0%
02929 - MECC - Capital								
0910 - Furniture & Equipment Capital Works	\$ 2,228	\$ -	0	2,000	0	15,000	2,000	100%
02939 - Senior Citizens - Capital								
0900 - Building Capital Works	\$ 80,000	\$ 288	4,728	95,000	67,793	101,500	27,207	29%
02949 - Environmental Health - Capital								
0910 - Furniture & Equipment Capital Works			0	0	4,043	5,500	(4,043)	0%
02959 - Animal Pound - Capital								
0930 - Animal Pound - Capital Works	\$ -	\$ -	0	0	14	0	(14)	0%
02969 - Maternal & Child Health - Capital								
0900 - Building Capital Works	\$ 20,000	\$ 70,732	0	6,556	5,540	11,058	1,016	15%
0920 - Computer / IT Capital Works	\$ 2,500	\$ -	0	6,500	0	0	6,500	100%
02979 - Fire Hydrants - Capital								
0965 - Fire Hydrants - Capital	\$ -	\$ -	0	4,000	0	0	4,000	100%
02989 - Preschools - Capital								
0900 - Building Capital Works	\$ 43,000	\$ 487	0	5,000	7,120	7,120	(2,120)	(42%)
03909 - Industrial Estate - Capital								
0905 - Industrial Estate Capital Works	\$ 35,000	\$ -	0	15,000	11,045	13,000	3,955	26%
03919 - Caravan Parks - Capital								
0900 - Building Capital Works	\$ 76,000	\$ 57,525	0	10,000	34,562	35,000	(24,562)	(246%)
0910 - Furniture & Equipment Capital Works	\$ 2,000	\$ -	0	2,000	0	2,000	2,000	100%
03929 - Public Amenities - Capital								
0900 - Building Capital Works	\$ 5,000	\$ -	1,373	70,000	66,519	65,000	3,481	5%
04939 - Hall - Capital								
0900 - Building Capital Works	\$ 48,000	\$ 48,459	0	50,000	2,588	2,588	47,412	95%
05909 - Parks & Playgrounds - Capital								
0975 - Playground Capital Works	\$ 21,630	\$ 105,386	0	10,000	137,409	137,408	(127,409)	(1274%)
05919 - Recreation Reserve - Capital								
0900 - Building Capital Works	\$ -	\$ -	0	348,000	180,636	360,000	167,364	48%
05939 - Swimming Pool - Capital								
0900 - Building Capital Works	\$ 20,000	\$ -	0	20,000	0	10,000	20,000	100%
05949 - Sporting Complex - Capital								
0900 - Building Capital Works	\$ 5,000	\$ 37,330	0	5,000	0	5,000	5,000	100%
0910 - Furniture & Equipment Capital Works	\$ 4,000	\$ -	0	4,000	0	4,000	4,000	100%
05959 - Gymnasium - Capital								
0910 - Furniture & Equipment Capital Works	\$ 4,000	\$ -	0	0	0	0	0	0%
06909 - Local Roads - Capital								
0935 - Urban Road Construction	\$ 186,000	\$ 255,868	7,081	191,120	140,196	159,120	50,924	27%
0940 - Rural Road Construction	\$ 2,363,544	\$ 2,605,985	177,813	2,325,481	1,973,216	2,225,481	352,265	15%
0945 - Reseals	\$ 229,911	\$ 231,432	0	336,912	133,241	336,912	203,671	60%
0950 - Resheets	\$ 1,178,760	\$ 1,465,280	85,995	1,135,608	1,065,876	1,505,608	69,732	6%
0955 - Shoulder Resheets	\$ 378,721	\$ 489,651	79,155	376,840	741,900	736,840	(365,060)	(97%)
06919 - Footpath - Capital								
0980 - Footpath Construction	\$ 201,337	\$ 136,014	0	211,992	52,610	211,592	159,382	75%
06929 - Bridge - Capital								
0990 - Bridge Construction	\$ 32,726	\$ -	0	33,764	0	0	33,764	100%
06939 - Kerb & Channel - Capital								
0985 - Kerb & Channel Construction	\$ 300,000	\$ 278,972	0	311,410	298,566	341,090	12,844	4%
06959 - Aerodrome - Capital								
0900 - Building Capital Works	\$ -	\$ 22,542	209,900	0	307,244	0	(307,244)	0%
0950 - Resheets	\$ 150,000	\$ 37,980	0	530,458	21,470	530,458	508,988	96%
06979 - Depot - Capital								
0900 - Building Capital Works	\$ 250,000	\$ 275,601	0	108,000	319,923	300,000	(211,923)	(196%)
07909 - Drainage - Capital								
0995 - Drainage Construction	\$ 33,297	\$ 50,478	0	35,000	0	20,000	35,000	100%
07929 - Transfer Stations & Landfills - Capital								
0960 - Waste Site Capital Works	\$ 20,000	\$ 6,285	0	20,000	8,001	20,000	11,999	60%

**YARRIAMBIACK SHIRE COUNCIL
CAPITAL EXPENDITURE FOR APRIL 2016**

	2014/2015 Budget	2014/2015 Actuals	April Actuals	2015/2016 Budget	YTD Actuals	Forecast	YTD Variance	YTD % Variance
08909 - Livestock Exchange - Capital								
0900 - Building Capital Works	\$ 10,300	\$ 29,717	0	5,000	0	0	5,000	100%
69760 - Staff Vehicle Purchases								
6800 - Plant Purchases	\$ 320,000	\$ 282,970	0	320,000	290,716	320,000	29,284	9%
69860 - Works Plant Purchases								
6800 - Plant Purchases	\$ 740,000	\$ 825,708	54,083	900,000	617,829	900,000	282,171	31%
Total	\$ 6,789,954	\$ 7,348,186	\$ 620,128	\$ 7,586,201	\$ 6,558,216	\$ 8,472,231	\$ 1,027,985	14%

YARRIAMBIACK SHIRE COUNCIL
BALANCE SHEET
AS AT 30th APRIL 2016

	2014/2015 Budget	2014/2015 Actuals	April Actuals	2015/2016 Budget	YTD Actuals	Forecast	YTD Variance	YTD % Variance
Current Assets								
Cash & Cash Equivalents Investments	\$ 2,992,000	\$ 4,322,000	\$ (1,901,819)	\$ 1,429,000	\$ 3,355,299	\$ 1,429,000	\$ (1,926,299)	(135%)
Rate Debtors	\$ 900,000	\$ 1,185,000	\$ (84,129)	\$ 850,000	\$ 2,000,970	\$ 850,000	\$ (1,150,970)	(135%)
Debtors	\$ 511,000	\$ 407,000	\$ 131,734	\$ 94,000	\$ 435,817	\$ 94,000	\$ (341,817)	(364%)
Other Current Accrued Assets	\$ 180,000	\$ 206,000		\$ 180,000	\$ 17,096	\$ 180,000	\$ 162,904	91%
Inventory On Hand	\$ 900,000	\$ 484,000	\$ 4,027	\$ 711,000	\$ 514,243	\$ 711,000	\$ 196,757	28%
Assets Held for Resale	\$ 84,000	\$ 31,000		\$ 15,000	\$ 31,320	\$ 15,000	\$ (16,320)	(109%)
Current Assets Total	\$ 5,567,000	\$ 6,635,000	\$ (1,850,187)	\$ 3,279,000	\$ 6,354,745	\$ 3,279,000	\$ (3,075,745)	
Non Current Assets								#DIV/0!
Non Current Debtors	\$ -	\$ 1,000	\$ -	\$ -	\$ 609	\$ -	\$ (609)	0%
Investments	\$ 350,000	\$ 481,000	\$ -	\$ 357,000	\$ 480,752	\$ 357,000	\$ (123,752)	0%
Fixed Assets	\$ 149,645,000	\$ 154,054,000	\$ 620,128	\$ 159,177,000	\$ 160,614,002	\$ 159,177,000	\$ (1,437,002)	(1%)
Non Current Assets Total	\$ 149,995,000	\$ 154,536,000	\$ 620,128	\$ 159,534,000	\$ 161,095,363	\$ 159,534,000	\$ (1,561,363)	
TOTAL ASSETS	\$ 155,562,000	\$ 161,171,000	\$ (1,230,059)	\$ 162,813,000	\$ 167,450,108	\$ 162,813,000	\$ (4,637,108)	
Current Liabilities								
Creditors	\$ (1,200,000)	\$ (2,070,000)	\$ 886,552	\$ (1,200,000)	\$ (704,493)	\$ (1,200,000)	\$ (495,507)	41%
Current Loans	\$ (151,000)	\$ (136,000)		\$ (62,000)	\$ (135,973)	\$ (135,973)	\$ 73,973	(119%)
Short Term Provisions	\$ (2,619,000)	\$ (2,854,000)	\$ (63,498)	\$ (2,619,000)	\$ (2,891,914)	\$ (2,619,000)	\$ 272,914	(10%)
Trust & Deposits	\$ -	\$ (31,000)	\$ (1,645)	\$ -	\$ (163,661)	\$ -	\$ 163,661	0%
Current Liabilities Total	\$ (3,970,000)	\$ (5,091,000)	\$ 821,409	\$ (3,881,000)	\$ (3,896,041)	\$ (3,954,973)	\$ 15,041	
Non Current Liabilities								
Long Term Provisions	\$ (404,000)	\$ (519,000)		\$ (404,000)	\$ (519,433)	\$ (404,000)	\$ 115,433	(29%)
Non Current Loans	\$ (199,000)	\$ (215,000)	\$ 25,018	\$ (229,000)	\$ (103,819)	\$ (229,000)	\$ (125,181)	55%
Non Current Liabilities Total	\$ (603,000)	\$ (734,000)	\$ 25,018	\$ (633,000)	\$ (623,252)	\$ (633,000)	\$ (9,748)	
TOTAL LIABILITIES	\$ (4,573,000)	\$ (5,825,000)	\$ 846,427	\$ (4,514,000)	\$ (4,519,293)	\$ (4,587,973)	\$ 5,293	
NET ASSETS	\$ (150,989,000)	\$ (155,346,000)	\$ 383,632	\$ (158,299,000)	\$ (162,930,816)	\$ (158,225,027)	\$ 4,631,816	
Current Assets								
Accumulated Surplus/Deficit	\$ (64,189,000)	\$ (60,384,000)	\$ 383,632	\$ (58,941,000)	\$ (61,411,043)	\$ (58,867,027)	\$ 2,470,043	(4%)
Asset Revaluation Reserve	\$ (86,800,000)	\$ (94,962,000)	\$ -	\$ (99,358,000)	\$ (101,519,773)	\$ (99,358,000)	\$ 2,161,773	(2%)
TOTAL EQUITY	\$ (150,989,000)	\$ (155,346,000)	\$ 383,632	\$ (158,299,000)	\$ (162,930,815)	\$ (158,225,027)	\$ 4,631,815	

YARRIAMBIACK SHIRE COUNCIL

Investments

Bendigo Bank	\$ 325,769.81	2.60%	01/09/2016
Commonwealth Bank	\$ 129,070.64	2.35%	19/07/2016
AMP (oncall)	\$ 510.39		Oncall
\$	455,350.84		

Loans

	Term & Rate	Finish Date
National Australia Bank - Unfunded Superannuation	\$ 264,810 Fixed at 5.21%	30/06/2018
\$	264,810	

Rates Report - May 2016

Prepared by Chantelle Pitt

Rate Code	Ward Description	Total Income	Rebate Total	Receipts	Total
General Rates	Dunmunkle	\$ 3,172,640.94	\$ (47,775.35)	\$ (2,659,259.06)	\$ 465,606.53
	Hopetoun	\$ 3,445,765.43	\$ (37,189.56)	\$ (2,996,018.36)	\$ 412,557.51
	Warracknabeal	\$ 4,206,484.29	\$ (60,537.68)	\$ (3,616,443.59)	\$ 529,503.02
Total		\$ 10,824,890.66	\$ (145,502.59)	\$ (9,271,721.01)	\$ 1,407,667.06
120L Residential Garbage Service	Dunmunkle	\$ 144,521.44	\$ (9,265.56)	\$ (87,512.35)	\$ 47,743.53
	Hopetoun	\$ 120,718.31	\$ (7,091.04)	\$ (66,599.19)	\$ 47,028.08
	Warracknabeal	\$ 210,063.66	\$ (9,624.16)	\$ (134,725.00)	\$ 65,714.50
Total		\$ 475,303.41	\$ (25,980.76)	\$ (288,836.54)	\$ 160,486.11
120L Commercial Garbage Service	Dunmunkle	\$ 4,504.36	\$ -	\$ (3,966.96)	\$ 537.40
	Hopetoun	\$ 5,271.88	\$ -	\$ (4,200.81)	\$ 1,071.07
	Warracknabeal	\$ 4,560.84	\$ -	\$ (3,396.01)	\$ 1,164.83
Total		\$ 14,337.08	\$ -	\$ (11,563.78)	\$ 2,773.30
120L Rural Garbage Service	Dunmunkle	\$ 4,487.92	\$ (109.65)	\$ (3,940.06)	\$ 438.21
	Hopetoun	\$ 2,336.32	\$ -	\$ (1,834.68)	\$ 501.64
	Warracknabeal	\$ 6,078.24	\$ (55.81)	\$ (5,147.18)	\$ 875.25
Total		\$ 12,902.48	\$ (165.46)	\$ (10,921.92)	\$ 1,815.10
240L Residential Garbage Service	Dunmunkle	\$ 6,446.57	\$ (309.12)	\$ (4,885.57)	\$ 1,251.88
	Hopetoun	\$ 7,533.42	\$ (387.45)	\$ (4,394.50)	\$ 2,751.47
	Warracknabeal	\$ 23,583.84	\$ (604.36)	\$ (17,630.09)	\$ 5,349.39
Total		\$ 37,563.83	\$ (1,300.93)	\$ (26,910.16)	\$ 9,352.74
240L Commercial Garbage Service	Dunmunkle	\$ 42,505.63	\$ -	\$ (29,120.10)	\$ 13,385.53
	Hopetoun	\$ 32,833.11	\$ -	\$ (28,067.46)	\$ 4,765.65
	Warracknabeal	\$ 98,838.74	\$ -	\$ (86,311.77)	\$ 12,526.97
Total		\$ 174,177.48	\$ -	\$ (143,499.33)	\$ 30,678.15
240L Rural Garbage Service	Dunmunkle	\$ 10,199.52	\$ -	\$ (9,161.64)	\$ 1,037.88
	Hopetoun	\$ 9,491.18	\$ -	\$ (8,152.65)	\$ 1,338.53
	Warracknabeal	\$ 20,403.34	\$ -	\$ (19,598.88)	\$ 804.46
Total		\$ 40,094.04	\$ -	\$ (36,913.17)	\$ 3,180.87
80L Residential Garbage Service	Dunmunkle	\$ 31,365.06	\$ (2,108.42)	\$ (17,932.21)	\$ 11,324.43
	Hopetoun	\$ 32,727.96	\$ (2,468.47)	\$ (17,799.34)	\$ 12,460.15
	Warracknabeal	\$ 38,735.68	\$ (1,902.42)	\$ (25,111.01)	\$ 11,722.25
Total		\$ 102,828.70	\$ (6,479.31)	\$ (60,842.56)	\$ 35,506.83
80L Rural Garbage Service	Dunmunkle	\$ 1,118.56	\$ -	\$ (1,048.64)	\$ 69.92
	Hopetoun	\$ 838.92	\$ -	\$ (838.92)	\$ -
	Warracknabeal	\$ 3,495.50	\$ (45.48)	\$ (3,338.47)	\$ 111.55
Total		\$ 5,452.98	\$ (45.48)	\$ (5,226.03)	\$ 181.47
Residential Kerbside Recycling	Dunmunkle	\$ 118,778.05	\$ (7,979.75)	\$ (73,677.14)	\$ 37,121.16
	Hopetoun	\$ 101,818.95	\$ (6,926.75)	\$ (62,610.52)	\$ 32,281.68
	Warracknabeal	\$ 174,170.15	\$ (8,116.30)	\$ (116,627.56)	\$ 49,426.29
Total		\$ 394,767.15	\$ (23,022.80)	\$ (252,915.22)	\$ 118,829.13
Commercial Kerbside Recycling	Dunmunkle	\$ 10,600.86	\$ -	\$ (8,034.65)	\$ 2,566.21
	Hopetoun	\$ 8,316.87	\$ -	\$ (7,522.51)	\$ 794.36
	Warracknabeal	\$ 16,082.26	\$ -	\$ (13,922.92)	\$ 2,159.34
Total		\$ 34,999.99	\$ -	\$ (29,480.08)	\$ 5,519.91
Rural Kerbside Recycling	Dunmunkle	\$ 2,115.72	\$ (27.45)	\$ (1,923.80)	\$ 164.47
	Hopetoun	\$ 1,894.43	\$ -	\$ (1,639.32)	\$ 255.11
	Warracknabeal	\$ 1,504.80	\$ (24.42)	\$ (1,480.38)	\$ -
Total		\$ 5,514.95	\$ (51.87)	\$ (5,043.50)	\$ 419.58
Municipal Charge	Dunmunkle	\$ 125,301.75	\$ (5,263.40)	\$ (81,119.11)	\$ 38,919.24
	Hopetoun	\$ 146,353.67	\$ (4,669.28)	\$ (83,051.33)	\$ 58,633.06
	Warracknabeal	\$ 180,733.52	\$ (5,364.17)	\$ (118,100.08)	\$ 57,269.27
Total		\$ 452,388.94	\$ (15,296.85)	\$ (282,270.52)	\$ 154,821.57
SDL/Bins/Fire/Old Municipal Charge	Dunmunkle	\$ 6,492.77	\$ -	\$ (463.17)	\$ 6,029.60
	Hopetoun	\$ 4,667.06	\$ -	\$ -	\$ 4,667.06
	Warracknabeal	\$ 5,310.18	\$ -	\$ -	\$ 5,310.18
Total		\$ 16,470.01	\$ -	\$ (463.17)	\$ 16,006.84
Credits	Dunmunkle	\$ -	\$ -	\$ (16,284.46)	\$ (16,284.46)
	Hopetoun	\$ -	\$ -	\$ (13,699.32)	\$ (13,699.32)
	Warracknabeal	\$ -	\$ -	\$ (12,331.05)	\$ (12,331.05)
Total		\$ -	\$ -	\$ (42,314.83)	\$ (42,314.83)
Fire Services Fixed Charge	Dunmunkle	\$ 230,455.51	\$ (16,850.00)	\$ (163,128.85)	\$ 50,476.66
	Hopetoun	\$ 264,180.55	\$ (12,400.00)	\$ (184,062.64)	\$ 67,717.91
	Warracknabeal	\$ 333,801.18	\$ (19,550.00)	\$ (240,988.28)	\$ 73,262.90
Total		\$ 828,437.24	\$ (48,800.00)	\$ (588,179.77)	\$ 191,457.47
Fire Services Levy	Dunmunkle	\$ 137,670.05	\$ -	\$ (125,008.81)	\$ 12,661.24
	Hopetoun	\$ 163,035.05	\$ -	\$ (150,483.01)	\$ 12,552.04
	Warracknabeal	\$ 185,383.33	\$ -	\$ (172,077.63)	\$ 13,305.70
Total		\$ 486,088.43	\$ -	\$ (447,569.45)	\$ 38,518.98
Grand Total		\$ 13,906,217.37	\$ (266,646.05)	\$ (11,504,671.04)	\$ 2,134,900.28

% Outstanding of Current Rates & Charges

15.35%

% Outstanding 2015

13.96%

% Outstanding 2014

12.43%

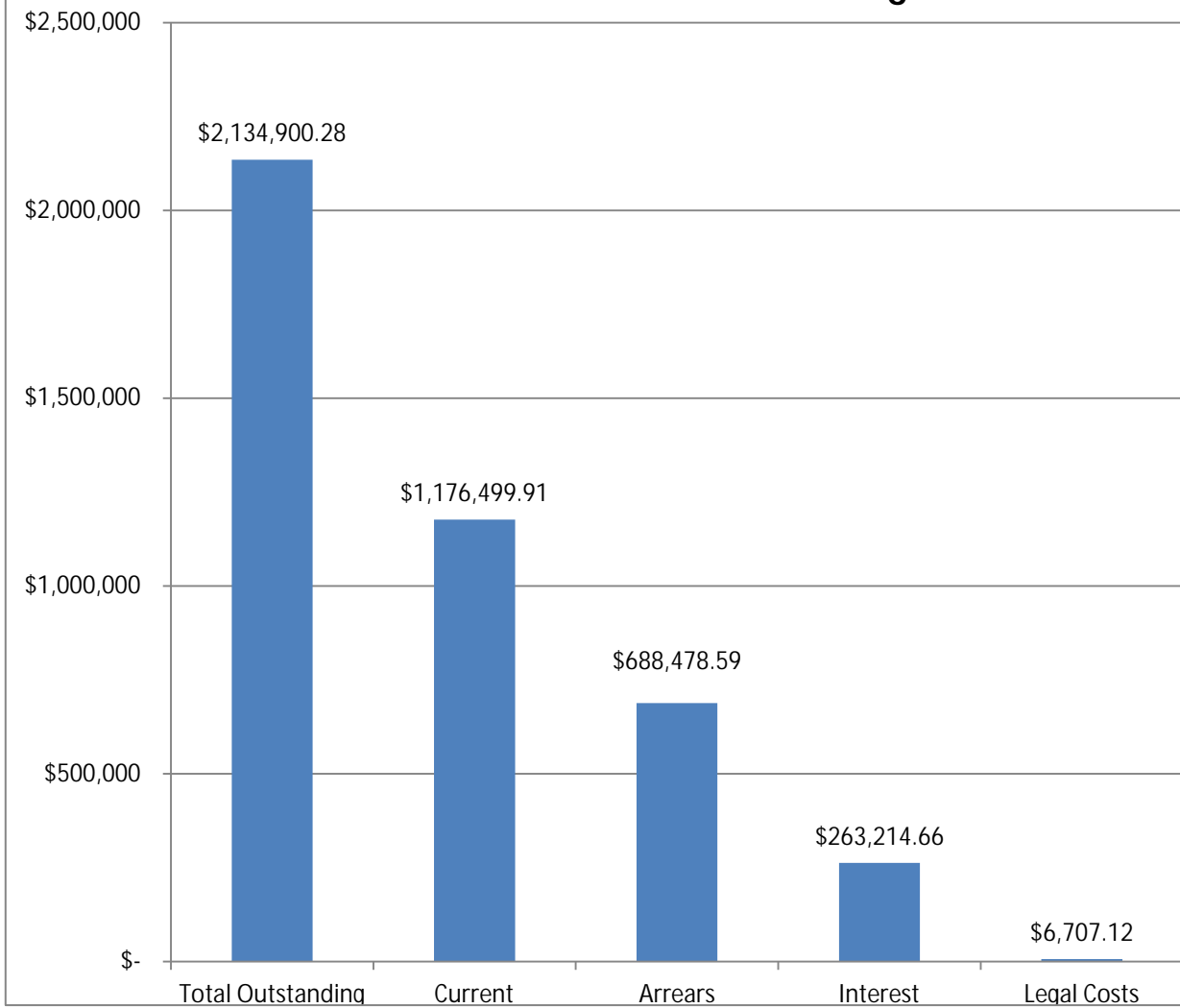
% Outstanding 2013

14.39%

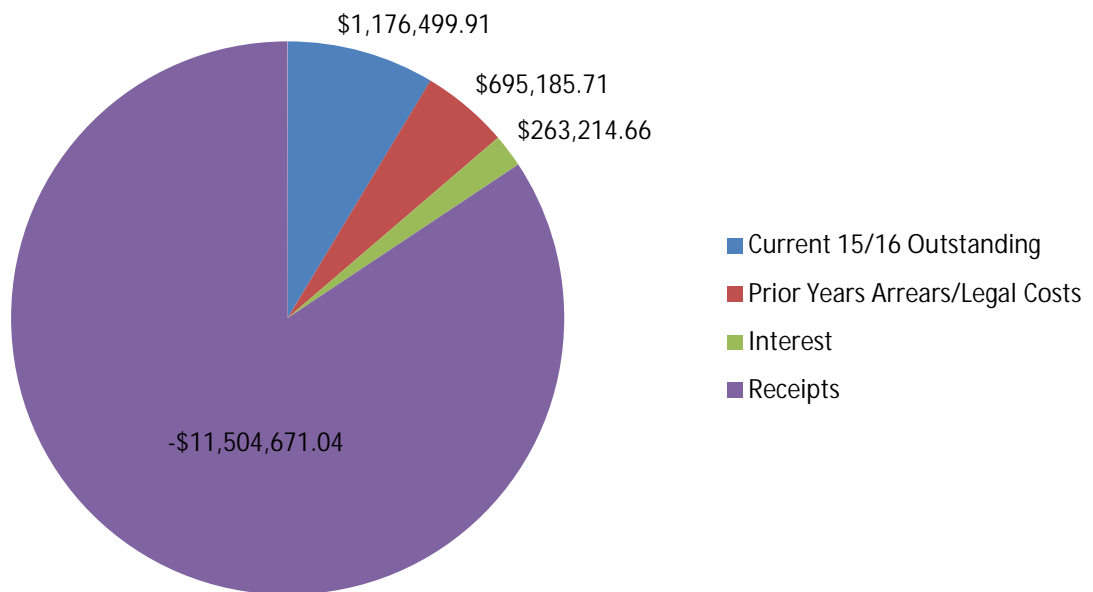
Recommendation

That the report be received.

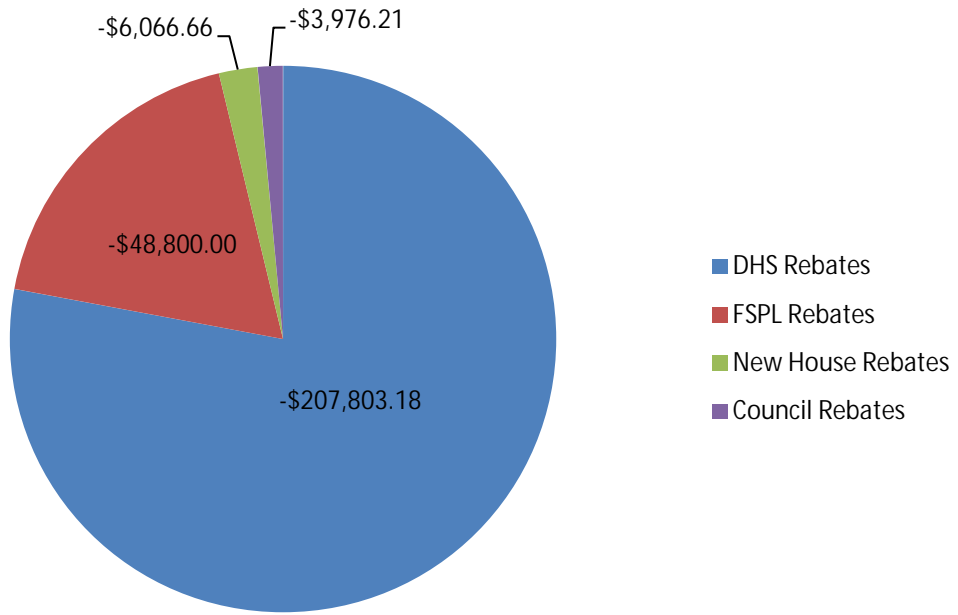
Breakdown of Rates Outstanding



Breakdown of Rates



2015/16 Rebates



Application Identifier x (ppr v0.04) 1.1	Application type 1.2	Property Location					Estimated Cost of Works 1.7	Proposed Use or Development 1.8	Applicant Details			Date Application Received 2.1	Responsible Authority Outcome 4.1	Date of Responsible Authority Outcome 4.2		
		Street Address		Crown Description		Lot on Plan			Name 1.9.1	Street Number, Name, Type					Locality 1.9.1.2	
		Street Number, Name, Type 1.3.1.1	Locality 1.3.1.2	Allotment, Parish/Township 1.3.4	Lot 1.3.5.1	Plan 1.3.5.2				Street Number, Name, Type 1.9.1.1	Locality 1.9.1.2					
TP69-15	New application	Reeds Rd	Lascelles	CA37 Parish Gama			25,000	Use and Development of Land for mineral extartction (Gypsum Extraction)	Mark Smith	32 Campbell St	Birchip	27/10/2015	Notice of decision issued by delegate of the Responsible Authority	27/04/2016		
TP04-16	New application	9 Boolite-Donald Rd	Boolite	CA24a, Parish of Dunmunkle			250,000	Construction of Telecommunications Facility	Exomm Intergrated Services	Shop 3, 157 Martin St	Brighton	02/03/2016	Permit issued by a delegate of the Responsible Authority	11/04/2016		
TP07-16	New application	68 Phillips St	Beulah	CA4 Sec 9 Parish Galaquil			5,000	Sale of Package Liquor	Willem Polman	24 Hent Highway	Beulah	15/02/2016	Notice of decision issued by delegate of the Responsible Authority	27/04/2016		
TP08-16	New application	63 Molyneaux St	Warracknabeal	CA12(pt), Sec 29 Parish Werrigar	Lot 1	TP390691A	12,700	Re-erection of Dwelling	Mikhail Pavlovitch	722 Glenelg Highway	Smythes Creek	05/04/2016	In progress			
TP09-16	New application	46 Henty Highway	Warracknabeal		Lots 5 & 7	PS023940	28,000	Construction of a Garage	George Grant	PO Box 431	Warracknabeal	14/04/2016	In progress			
TP10-16	New application	12 Mitchell Place	Hopetoun	CA 1, Parish Goyura		PC364953V	334,000	Extensions to Existing Building	Rural Northwest Health	12 Mitchell Pl	Hopetoun	19/04/2016	In progress			
TP11-16	New application	53-55 Scott St	Warracknabeal		Lot 1	TP214898P	0	2 Lot Subdivision	Northwest Real Estate	PO Box 435	Warracknabeal	19/04/2016	In progress			
TP12-16	New application	6 R Learmonth Rd	Minyip		Lot 2	PS421080C	1,000,000	Grain Processing & Storage	Wimpak Export Company Pty Ltd	PO Box 101	Minyip	21/04/2016	In progress			
TP13-16	New application	123 King Rd	Crymelon		Lot 2	LP110620	0	Subdivision	Mark Bish	123 King Rd	Crymelon	26/04/2016	In progress			