

MINUTES OF ORDINARY MEETING OF YARRIAMBIACK SHIRE COUNCIL HELD ON WEDNESDAY 09 NOVEMBER 2011 AT THE MUNICIPAL OFFICE 34 LYLE STREET WARRACKNABEAL AT 9:30 AM

1 WELCOME

2 ACKNOWLEDGEMENT

We acknowledge the traditional owners of the land on which we meet today and pay our respect to both past and present elders.

3 PRAYER

Almighty God, without whom no Council can stand nor anything prosper we ask that you be present and guide us in our deliberations today. We pray that we will be fair in our judgements and wise in our actions and that decisions will be made with goodwill and a clear conscience for the betterment and welfare of the people of Yarriambiack Shire.

Amen

4 PRESENT

Crs J Kempfert, A McLean, J Wise, H Ballentine, G Lovel, K Zanker, Ray Campling (Chief Executive Officer).

5 APOLOGIES

Cr R Kingston, James Magee (Director Infrastructure & Planning) Terry Saunders (Manager Economic & Community Development).

Moved Cr G Lovel seconded Cr H Ballentine that apologies be accepted.

Carried

6 CONFIRMATION OF MINUTES

Ordinary Meeting of Council – 12 October 2011

Moved Cr J Wise seconded Cr K Zanker the Minutes of the Ordinary Meeting of Council held on 12 October 2011 be confirmed.

Carried

Closed Session – 12 October 2011

Moved Cr G Lovel seconded Cr H Ballentine the Minutes of the Closed Meeting of Council held on 12 October 2011 be confirmed.

Carried

7 DECLARATION OF CONFLICT OF INTEREST

Cr J Wise declared a Declaration of Conflict of Interest in regards to item 11.7 – Community Group Financial Assistance Scheme.

8 BUSINESS ARISING

8.1 Action List from last meeting

8.2 Ongoing and Pending Action List

9 PETITIONS

10 REPORTS

Corporate Reports

10.1 Mayor's Report

10.2 Councillor/Delegate Reports

10.3 Chief Executive Officer – Activity Report

10.4 Director Infrastructure & Planning Report

10.5 Works Report

10.6 Community Services Report

10.7 Infrastructure Services Report

10.8 Economic & Community Development Report

11 REPORTS FOR DECISION

11.1 Finance Report (*tabled*)

11.2 Revenue Report (*tabled*)

11.3 Dangerous Dog Policy (Dog Attack Prevention Strategy)

11.4 Emergency Management – Appointment of Deputy Municipal Emergency Resource Officers

11.5 Proposal to Gravel Ailsa Road

11.6 Renaming of Webbs Road, Murtoa to Rosecrea Road and Forest Home Road, Murtoa

11.7 Community Group Financial Assistance Scheme – December 2011

11.8 SHARE Community Grants

11.9 Planning Application: TP 22-11

10.1 Mayor's Report – prepared by Cr John Kemfert

13 October	Attended Yaapeet Community Consultation Visit
14 October	Attended 2011 WorkCo Ltd Awards Night held at Longerenong College
21 October	Attended Murtoa Stick Shed Future Management Steering Committee Meeting
22 October	Attended the B & M Macklin St Arnaud Cup – Northern Grampians Shire Council Hospitality Marquee
24 October	Attended 'Live4Life' Forum at Yarriambiack Shire
26 October	Council Forum
28 October	Attended Official Opening of the Wimmera Medical Centre by the Hon David Davis MP, Minister for Health
3 November	Attended Grampians Regional Management Forum and End of Year Dinner at Ararat
4 November	Mayoral Get Together – hosted by Yarriambiack Shire Council
5 November	Attended Lubeck Community Flood Recovery Dinner

10.2 Councillor's Reports**Cr K Zanker**

11 October	Wimmera Volunteers Staff Appraisal Meeting
12 October	Council Meeting
12 October	Town Hall Committee Meeting
13 October	Community Consultation Yaapeet
19 October	Wimmera Volunteers Staff/Board Dinner
21 October	Wimmera Regional Library Meeting
21 October	Doug McColl Celebration Evening
22 October	Attended the Awakening's Ball
24 October	Live4Life – presentation from Macedon Ranges Council
26 October	Council Forum
27 October	Arts Council Annual General Meeting
28 October	Yarrilinks Strategic Planning Day
4 November	Wimmera Volunteers – morning tea celebrating 'International Volunteer Managers Day (IVMDAY) 2011'

Cr H Ballentine

13 October	Maree Dyer (past Tempy resident) and I unveiled Parish Maps at Tempy, attended morning tea and toured local farms
13 October	Attended Community Visitation to Yaapeet
20 October	Attended Wimmera Mallee Tourism Steering Group Meeting at the Wimmera Business Centre in Horsham
26 October	Council Forum
27 October	Chaired Yarriambiack Tourism Association Meeting in Warracknabeal
1 November	Attended Hopetoun Senior Citizens Cup Luncheon and judged Hat Competition

Cr G Lovel

19-21 October	Waste Management Association Melbourne
24 October	Grampians Regional Waste Management Group Meeting in Stawell
26 October	Council Forum
27 October	Wimmera Regional Freight Hub Meeting at Dooen/Horsham

Cr J Wise

15 October	Australian Local Government Women's Association 60 th Anniversary Celebration & Presentation of 2011 Bursary Award in Box Hill
21 October	Attended Celebration of Doug McColl's 'Victorian Senior of the Year Award' at Rural Northwest Health Warracknabeal Campus
24 October	Opened Woodbine's 59 th Annual General Meeting
26 October	Council Forum
28 October	Wimmera Leadership Graduation Dinner - Horsham
5 November	Australian Local Government Women's Association Victorian Branch Strategic Meeting – Macedon Ranges
8 November	Wimmera Development Association General Meeting and AGM

Cr A McLean

13 October	Attended the unveiling of the Tempy Pioneer's Map at Tempy
13 October	Attended the Community Consultation BBQ at Yaapect
14 October	Participated on the evaluation panel for the SHARE Grants
20 October	Attended Grampians Wimmera Mallee Water Community Consultative Committee Meeting in Ouyen
26 October	Attended Council Forum in Warracknabeal
28 October	Attended Municipal Association of Victoria State Council Conference in Melbourne
2 November	Attended the Sunraysia Highway Improvement Committee Meeting at Birchip
2 November	Attended the Yarriambiack Creek Committee Meeting in Warracknabeal

10.3 Chief Executive Officer – Activity Report – Prepared by Ray Campling

- Attended Yaapeet Community Visitation
- Attended Rural Council's Victoria Meeting in Bendigo
- Met with Pat McAloon – Internal Audit Committee Member
- Met with Minister for Planning, Matthew Guy in regards to Council's C17 Amendment Proposal

- Met with Dean Miller – North Western Municipalities Association
- Met with Keith Jackson – Grampians Regional Management Forum
- Met with Damian Drum, Member for Northern Victoria - various matters
- Attended Wimmera Southern Mallee Project Steering Meeting in Horsham
- Attend Wimmera Development Association Meeting with Cr Wise
- Met with Terry Lewis, Regional Manager – Department of Primary Industries
- Met with Peter Brown, Horsham Rural City Council CEO – various matters
- Attended Victorian Electoral Commission Meeting in Horsham – 2012 Council Elections

- Attended Wimmera CEO's Meeting in Horsham
- Met with Peter Rademaker – SHARE Program
- Met with Glenelg Shire Council staff – Governance and Community Engagement
- Met with Colin Morrison, Executive Officer – Grants Commission
- Met with Peter Vernell – Staff training options
- Met with Louis Watson – Community Development options
- Attended Grampian Regional Management Forum and Dinner in Ararat with Mayor Kemfert

- Met with the new Board of Wimmera Catchment Management Authority in Horsham
- Attended Wimmera Development Association (WDA) – Annual General Meeting in Horsham
- Met with Jodie Arnold, Mildura Rural City Council – various matters
- Attended WDA Leadership Graduation with Cr Wise in Horsham
- Attended Woodbine Annual General Meeting
- Attended Rural Council's Victoria Executive Meeting and Forum in Melbourne
- Attended Municipality Association of Victoria Annual State Conference in Melbourne
- Met with Dan Logan – Community Engagement

10.4 Director Infrastructure & Planning Report – Prepared by James Magee**Yaapeet Rail Line**

Recent announcements regarding the upgrade of the Yaapeet Line have been greatly appreciated; however the upgraded section will not go beyond the township of Rainbow.

The section of line between Rainbow and Yaapeet has not been identified for upgrade and will remain as 'bronze status'. This will mean that much of the 30,000 tonne of grain which is accepted into storage at Yaapeet each year will be hauled to Rainbow via a Council road.

Further upgrading of the 16 km northern section of the Yaapeet line would mean fewer trucks on Council roads and greater safety for our road users.

Moved Cr H Ballentine seconded Cr J Wise that:-

- **Council write to Graincorp to clarify their ongoing operational facility at Yaapeet and to request their support for the upgrade to Silver status of the railway line between Rainbow and Yaapeet.**
- **Council write to relevant Ministers requesting the upgrade of the rail line between Rainbow and Yaapeet.**

Carried

Mobile Phone Coverage

Mobile phone coverage within Yarriambiack Shire has gradually improved during the last decade; however two of our communities have little or no mobile coverage. Patchewollock and Yaapeet have poor access to mobile services and this was again brought to Council's attention at our recent community meeting at Yaapeet.

I believe it is time for Council to lobby on behalf of these communities for improved mobile phone services.

Moved Cr A McLean seconded Cr J Wise that Council write to Optus and Telstra to improve mobile phone services for the Patchewollock and Yaapeet communities.

Carried

Iluka

All road works and loading site works have now been completed at Hopetoun.

A second trial train visited Hopetoun 27 October 2011, with an earlier trial completed in September 2011.

Kalari have commenced advertising for staff.

Assets –Prepared by Mick Evans

- Implement the new Obstacle Limitation survey overlay that Council purchased into the GIS system to help guide the Planning Department and assist with aerodrome management
- Implement the new Bush & Fire Prone Areas overlay into the Council's GIS system
- Ongoing review of the Council's computer CRM system (Civica) and address any issues raised
- Commence collating data for the Department of Planning & Community Development Asset Management Data Collection Survey

OH&S - Risk Management

- Assist with the implementation of the OH&S Action Plan with OH&S Consultant, Collin Supple
- Commenced implementation of the new draft OH&S Structure and OH&S Committee Structure for the Yarriambiack Shire Council
- Implement the election process for new OH&S Representatives
- Developed a new Risk Management Register

Design – Prepared by John Boehm**Council Works and Capital Works Program**

Surveys and Plans are in progress for the following:

- Reconstruction of pavement and kerbing on both sides of Clifford Street Warracknabeal
- Completion of pavement and sealing works for McDonald Street and Haby Lane Murtoa;
- Designs and Set-out for three median traffic islands along the Illuka access road (Campbell Street) Hopetoun – now complete with hotmix asphalted intersections;
- Lascelles West Road Reconstruction – 2.5km is being constructed and approximately 1km is left to set out;
- Dimboola Minyip Road Widening – set-out is complete with works well advanced.

Flood Control Works

- Warracknabeal Outlet Weir Pool – Box culverts – road works are well advanced with VicRoads planning to open the main road to traffic as soon as possible. Good progress is being made with all stages of work
- Brim flood control works including the Brim West Road floodway – works are well advanced but the road works have been halted for harvest
- Murtoa south side Bypass Drain project – a chain mesh safety fence along the drain bordering private house properties is now organised and should be completed in several weeks.

Community Projects

- A Warracknabeal Development Committee has obtained funding to apply for a Planning Permit and commence works for a Highway Rest Stop in Warracknabeal
- Proposals for a disabled access ramp at the Murtoa Post Office are being drawn up – one preferred proposal will be investigated.

Environment – Prepared by Geoff Harvey

- Attended Wimmera Landcare Forum, Kaniva
- Attended Sustainability Accord Workshop, Ballarat
- Submitted accord grant to Department of Sustainability and Environment
- Yarrilinks Meeting, Horsham
- Emergency Management Working Group Meeting
- Submitted application for Yarrilinks group for funding for Landcare Facilitator
- Organise Yarrilinks planning day

Technical Support – Prepared by Zoe Heard

Continued work with the Hopetoun Depot including:

- Obtaining further quotes for fencing
- Obtaining further quotes to finalise shed
- Produced maps/plans for internal staff
- Weekly update of the Vehicle Register
- Aerodrome duty - inspect aerodrome twice weekly
- Set-up traffic counter
- Organised Tech Services Meeting (prepared minutes and agenda items)
- Completed next years Gravel Shoulder Program

Commenced work on this year's footpath program including:

- segmenting sections of the footpath in Asset Asyst
- Setting up programs for the hand held device so that it can be used whilst inspecting footpaths

Building & Planning Activity

In **October 2011** the following permits were issued:

Building: 5 Building Permits were issued in **October 2011**

Total Value of Building Work: **\$80,065**

Murtoa – Shade Shelter

Rupanyup – Alterations

Woomelang – Garage

Warracknabeal – Alterations

Murtoa – Alterations

10 applications were submitted in **October 2011**

Planning: 4 Planning Permits were issued in **October 2011**

App No: TP43-11
Applicant: Price Merrett Consulting – Mark Carter
Address of Land: Lot 2, Audrey Street, Hopetoun
Proposal: The land to be developed by the extension of Grain Bunkers and Earthworks
Date Issued: **25/10/2011**

App No: TP44-11
Applicant: Wilken Engineering – Scott Milne
Address of Land: 251 Warracknabeal-Birchip Road, Warracknabeal being Lot 143 Parish of Werrigar
Proposal: The Use of the Land for a Rural Store (land used to store unprocessed agricultural produce, or products used in agriculture) and a Rural Industry (servicing and repairs of vehicles used and owned by the owner/applicant in the transport of agricultural grain to and from the subject land) and to Develop the land by the erection of Sheds, Storage Bunkers, Car Parking, Fuel Bowsers, Office, Container Inspection Platform, Drainage and associated Earthworks
Date Issued: **19/10/2011**

YARRIAMBIACK SHIRE COUNCIL

COUNCIL MEETING

MINUTES

09 NOVEMBER 2011

App No: TP48-11
Applicant: Ross Sudholz
Address of Land: 19-11 Friend Street & 19 Lloyd Street, Murtoa
Proposal: The land to be subdivided in accordance with the endorsed plans
Date Issued: **25/10/2011**

App No: TP50-11
Applicant: Kalari Pty Ltd – Darren Whyte
Address of Land: Volume 10734 and Folio 892 being 33 Hopetoun-West Road, Hopetoun.
Proposal: The land to be used for service industry (repair, service or wash vehicles) and developed by the erection of an office complex, fuel bowser, wash down facility, water tanks and the construction of a dam
Date Issued: **25/10/2011**

12 applications were submitted in **September 2011**

10.5 Works Report – Prepared by Brain Poulton**Capital Works Program – Roads and Streets 2011-2012**

PROJECT	% COMPLETE	START DATE	COMPLETION DATE	COMMENT
Anderson Street Warracknabeal (\$23,221)		Feb 2012		Road Shoulder Road Reconstruction
Anderson Street Warracknabeal (\$21,300)		Feb 2012		Kerb & Channel Shire
Campbell Street Hopetoun (\$146,296)	100%	July 2011	October 2011	Road Reconstruction Shire
Campbell Street / Hopetoun West Intersection Hopetoun (\$130,328)	100%		September 2011	Road Reconstruction Shire
Campbell Street / Lascelles Street – Henty Highway Intersection Hopetoun (\$149,176)	100%	August 2011	October 2011	Road Reconstruction
Degenhardt Street Murtoa (\$10,048)		Nov 2011		Road Reconstruction Shire
Dingwell Street Beulah (\$14,067)		Nov 2011		Road Reconstruction Shire
Dingwell Street Beulah (\$5,024)		Nov 2011		Road Reconstruction Shire
Dettmann Lane Woomelang (\$12,727)		Jan 2012		Road Reconstruction Shire
Church Street Woomelang R2R (\$58,053)		Jan 2012		Road Reconstruction Shire

YARRIAMBIA SHIRE COUNCIL

COUNCIL MEETING

MINUTES

09 NOVEMBER 2011

PROJECT	% COMPLETE	START DATE	COMPLETION DATE	COMMENT
Haby Lane Murtoa (\$9,143)		Nov 2011		Road Reconstruction Shire
Stewart Street Rupanyup R2R (\$46,883)		April 2012		Road Reconstruction & Hotmix Intersection Shire
Hopetoun Reservoir Lane 7 (\$60,844)		Dec 2011		Road Reconstruction Shire
Luna Park Beulah (\$33,492)		Nov 2011		Road Reconstruction Shire
Brock Street Woomelang (\$18,000)		Feb 2012		Kerb & Channel
Brock Street Woomelang (\$12,560)		Feb 2012		Kerb & Channel
Clifford Street Warracknabeal (\$24,000)	30%	Oct 2011		Kerb & Channel Shire
Clifford Street Warracknabeal (\$29,473)		Oct 2011		Kerb & Channel Shire
Clifford Street Warracknabeal (\$24,000)		Oct 2011		Kerb & Channel Shire
McLeod Street Minyip (\$19,650)		Mar 2012		Kerb & Channel Shire
McLeod Street Minyip (\$14,625)		Mar 2012		Shoulder Sealing
South Street Minyip (\$11,850)		Dec 2011		Kerb & Channel
South Street Minyip (\$8,820)		Dec 2011		Shoulder Sealing

YARRIAMBIACK SHIRE COUNCIL

COUNCIL MEETING

MINUTES

09 NOVEMBER 2011

PROJECT	% COMPLETE	START DATE	COMPLETION DATE	COMMENT
Breen Street Murtoa (\$74,927)	100%	July 2011	September 2011	Kerb & Channel Contractor
Breen Street Murtoa (\$9,196)	100%	July 2011	September 2011	Kerb & Channel Contractor
Anderson Street Warracknabeal (\$21,300)		Feb 2012		Kerb & Channel Shire
Luna Park Beulah (\$50,000)		Nov 2011		Bridges & Culverts Contractor
Brim West (\$11,000)	90%	Sept 2011		Bridges & Culverts Contractor
Devereux Street Warracknabeal (\$6,275)	100%	Aug 2011	September 2011	Drainage Shire
Devereux Street Warracknabeal (\$3,143)	100%	Aug 2011	September 2011	Drainage Shire
Devereux Street Warracknabeal (\$5,582)	100%	Aug 2011	September 2011	Drainage Shire
Gardiner Street Warracknabeal (\$25,000)		Mar 2012		Drainage Contractor
Gardiner Street Warracknabeal (\$20,000)		Mar 2012		Drainage Contractor
Woomelang Tip R2R (\$72,566)		Feb 2012		Road Reconstruction Shire
Dumbuoy Road Warracknabeal (\$40,000)		Mar 2012		Road Reconstruction Shire
Dimboola/Minyip Road R2Market (\$443,808)	80%	Sept 2011		Road Reconstruction Shire
Rainbow Yaapeet Road R2Market (\$487,417)		April 2012		Road Reconstruction Shire

YARRIAMBIACK SHIRE COUNCIL

COUNCIL MEETING

MINUTES

09 NOVEMBER 2011

PROJECT	% COMPLETE	START DATE	COMPLETION DATE	COMMENT
Rupanyup (\$17,851)		Feb 2012		Road Reconstruction Shire
Brim East (\$48,700)	100%	Sept 2011	September 2011	Road Reconstruction Contractor
Burrum North Road R2R (\$247,913)	100%	Oct 2011	October 2011	Road Reconstruction Contractor
Lascelles West R2R (\$264,615)	100%	Sept 2011	October 2011	Road Reconstruction Shire
Lascelles West R2R (\$64,579)		Jan 2012		Road Reconstruction Shire
Lascelles West R2R (\$43,052)		Jan 2012		Road Reconstruction Shire
Lascelles West R2R (\$21,526)		Jan 2012		Road Reconstruction Shire
Watchem Warracknabeal R2R (\$115,507)	100%	Aug 2011	August 2011	Road Reconstruction Shire
Galaquil West Road (\$228,629)		March 2012		Road Reconstruction Shire
Sheep Hills Minyip Road (\$113,492)	100%	Sept 2011	October 2011	Road Reconstruction Contractor
Ashens Jackson Road (\$155,409)		April 2012		Road Reconstruction Shire

Footpath Program 2011/2012

PROJECT	% COMPLETE	START DATE	COMPLETION DATE	COMMENT
Gladstone Street Beulah (\$5,828)		Jan 2012		Gravel Path Shire
Garrard Street Hopetoun (\$14,295)		Feb 2012		Premix Path Shire
Toole Street Hopetoun (\$714)		Feb 2012		Reseal Footpath Shire
Church Street Minyip (\$11,490)	100%	Oct 2011	October 2011	Concrete Path Contractor
Market Street Minyip (\$5,065)	100%	Oct 2011	October 2011	Quarry Dust Path Contractor
Mill Street Minyip (\$2,037)	100%	Oct 2011	October 2011	Quarry Dust Path Contractor
Duncan Street Murtoa (\$4,838)		Nov 2011		Concrete Path Contractor
Hamilton Street Murtoa (\$4,082)		Nov 2011		Quarry Dust Path Contractor
Hamilton Street Murtoa (\$4,208)		Nov 2011		Quarry Dust Path Contractor
Hamilton Street Murtoa (\$6,728)		Nov 2011		Quarry Dust Path
Lake Street Murtoa (\$7,512)	100%	Oct 2011	October 2011	Quarry Dust Path Contractor
Miller Street Murtoa (\$2,541)		Dec 2011		Quarry Dust Path Contractor
Cromie Street Rupanyup (\$2,493)		Jan 2012		Reseal Footpath Shire
Chamberlain Street Rupanyup (\$8,368)		Jan 2012		Quarry Dust Path Contractor

YARRIAMBIACK SHIRE COUNCIL

COUNCIL MEETING

MINUTES

09 NOVEMBER 2011

PROJECT	% COMPLETE	START DATE	COMPLETION DATE	COMMENT
Chamberlain Street Speed (\$7,322)		Mar 2012		
Alamein Avenue Warracknabeal (\$13,008)		Jan 2012		
Jamouneau Street Warracknabeal (\$5,203)		Jan 2012		
Kokoda Avenue Warracknabeal (\$16,259)		Feb 2012		
Kokoda Avenue Warracknabeal (\$2,385)		Feb 2012		
Kokoda Avenue Warracknabeal (\$16,151)		Feb 2012		
Kokoda Avenue Warracknabeal (\$15,826)		Feb 2012		
Kokoda Avenue Warracknabeal (\$14,959)		Feb 2012		
Milbourne Street Warracknabeal (\$14,091)		Mar 2012		
Woolcock Street Warracknabeal (\$10,948)		Mar 2012		
Various (\$10,000)				
Various (\$10,000)				

Gravel Re-sheet Works

Total Re-sheet Program 65.820 km

Completed Re-sheets 7.950 km

Roads completed – October

- Desert Road
- Pirro Road
- Fred Frankles Road
- Schaches Road
- Kellys Road
- Anderson Neville Road

Shoulder Re-sheeting

- Warracknabeal Watchem Road

10.6 Community Services – Prepared by Gavin Blinman

Kindergartens

Following a community meeting at Beulah, we will not be offering a pre-school program in 2012 at Beulah. Only one 4 year old had enrolled and we have offered other options to families.

We will now inform all parties including the Department of Education & Early Childhood Development (DEECD) and work out the best way to engage the children in a Pre-School Program. We have offered a transport service and would now need to discuss this with the DEECD and then meet again with Beulah families.

Woomelang has now formally written to us to become part of our Kindergarten Cluster, we have commenced the paper work and will submit this to the DEECD.

All kindergarten staff have completed two days of professional development to update qualifications in First Aid and Anaphylaxis management. Staff also spent time discussing the new National Standards, Act and Quality Management we will come under in 2012.

Following a recent audit we have begun to update our kindergarten equipment. Murtoa has already had old and/or unsafe equipment replaced.

A schedule will be implemented to update and replace any unsafe or old equipment in our Kindergartens.

Aged and Disability

This month we met with Dunmunkle Health Assessment Staff to ensure we are not over servicing the south of the Shire and set up a better working relationship with Dunmunkle Health. We are also trying to recruit staff to the Home & Community Care area again and will look at agencies that can supply future workforce employees to assist us.

Staff attended training in the use of Home & Community Care software.

We have held two more successful 'Seniors Week' events this month at Rupanyup with the Police Show Band and Beulah Pipe Band.

We had good attendance at each concert and the Department of Seniors Victoria representative, who attended, has encouraged us to hold events again next year.

We are currently re-advertising the Portsea Camp as we usually take 25 children and we only have ten enrolled at the moment.

Environmental Health / Local Laws

Inspections of food premises are continuing. A new business has commenced in Rupanyup. Several onsite wastewater preliminary assessments have been conducted across the Shire. An application for a new system at the Yarriambiack picnic area in Warracknabeal is currently being processed.

Recreational water inspections across the Shire have commenced to identify any potential blue algae blooms.

The Shire Ranger attended a conference during his holidays to up-skill in Advanced Livestock Handling and Animal Management, including the Dangerous Dog Legislation. He also attended a session on the new Codes of Practice for Dog Pounds and Animal Shelters. The Relieving Ranger was kept busy in his absence and infringement notices were issued for having too many dogs in town limits. Sheep on roads has also been an issue.

Besides dealing with an influx of dogs, (up to six per week) we have had a pig impounded from the Murtoa district. No-one has claimed the animal which is large and has caused a few issues for us.

New works at the pound have been completed to enable us to clean the pound with water under pressure.

Youth

This month has seen the resignation of our Youth Worker in the south, she is returning to University.

We have applied for funding under the "Engage Program", which will involve youth in our Shire in community decision making and learning, by training them to run an annual youth event.

We will build on the current 'Yarriambiack has Talent' theme to develop an event similar to 'Y-Fest' but for youth.

We have held a meeting of concerned health and education service providers to look at mental health issues again this month. A team from Macedon Ranges Shire presented their successful Live4Life program to about 20 people at the Shire office. Discussions on the 'need for more education in our communities' was also held.

Following a recent suicide in Warracknabeal, we are looking at developing a way to promote positive mental health in our communities. The Engage Program funding may help us with this.

Emergency Relief

We have now had community meetings in Hopetoun, Beulah, Brim and Woomelang to discuss the formation of volunteer relief committees. Generally the idea has been well received and communities have a real interest in being more involved and learning more about our Shire Emergency Plan.

Emergency relief numbers have been quiet over the last few months as we continue to refer clients to Wimmera Uniting Care for budget counselling.

Lisa Cook (Flood Recovery Officer) has been working with Red Cross in the Rupanyup area to follow up on personal support issues.

Volunteer Transport

Transport requests are lower this month as we move to the summer and a generally quiet period for transport needs.

All volunteers now have a Council uniform and Lisa (Aged & Disability Services Officer) is planning a volunteer's lunch again in November.

Maternal and Child Health

This month for Children's Week our nurses held a series of healthy nutrition days across the Shire.

Also nurses are reviewing the program and hours to look at improvements we can make in 2012 to the Maternal Health Program.

SHARE Program (Sustainable Healthy Adaptable Resilient Engaged) –Prepared by Marianne Ferguson

Caravan Parks

An information day was held on Thursday 3 November to assist community groups to develop Emergency Management Plans as a component of their Caravan Park Registration.

Public Safety Infrastructure Grant

Submissions for the Murtoa and Warracknabeal Caravan Parks for funding to upgrade fire safety equipment have been submitted to the Public Safety Infrastructure Grant. The combined total funding requested was \$79,420 Inc. GST.

10.7 Infrastructure Services Manager – Prepared by Bernie Naylor

Contract C169/2011 Front End Loader

Council has advertised on 17 September 2011 for the supply and delivery of one Four Wheel Drive Front End Loader to be based out of the Warracknabeal Depot.

Tenders for this item of plant closed on Friday 14 October 2011.

Council has received ten tenders which will be discussed in Council's Closed Session.

Hopetoun Swimming Pool / Poulton Park Toilet Upgrade

As Council would be aware we have received funding of \$135,000 for this project which is matched by Council on a two for one basis.

Council did not receive any tender submissions for this project.

Following discussion with local trade's people from the Hopetoun area, we are now in a position to apply for a building permit and it is anticipated that works will commence in December 2011.

Council has applied for another extension re funding, with the project to be completed by May 2012.

Yaapeet Transfer Station

Following discussions with Allan Moyle, Council's Transfer Station Supervisor at Yaapeet, it has been suggested that the transfer station only open on Sunday's due to very low numbers using the service during the week.

Council discussed this with the Yaapeet community at the recent Community Consultation Meeting.

Allan will continue to go to Yaapeet on the Thursday, but spend his time undertaking town maintenance instead of opening the transfer station.

Anyone who requires urgent access to the transfer station on Thursdays can catch up with Allan while he is undertaking town maintenance.

Staff Vacancies Advertised

Due to pending retirements, reallocation of staff and the acquisition of additional plant, Council has advertised for following positions:-

- Two Tractor Drivers – Warracknabeal & Hopetoun
- One Handyperson – Warracknabeal
- One Part-time Transfer Station Operator – Warracknabeal

Wimmera Regional Transport Group

Attended the Wimmera Regional Transport Group meeting on Tuesday, 18 October 2011 in Horsham.

The following issues were discussed at this meeting:-

- Meeting with Minister Mulder 21 September 2011
- Wimmera Regional Intermodal Freight Hub
- Western Highway Re-alignment Horsham
- Horsham Aerodrome Upgrade
- Grain Freight Logistics Task Force
- Flood Restoration Works – Councils
- Passenger Services – Wi-Fi Proposal – Wimmera Development Association seeking support
- 2011/2012 Harvest Report

Also discussed was the draft submission regarding “C” Routes – Detour Route Improvement Strategy.

Warracknabeal Jeparit Road

Works are progressing well on the installation of culverts at the Warracknabeal Weir.

All culverts and head walls have now been completed with the road pavement now being constructed.

It is anticipated that the road will be open to traffic around 4 November 2011.

10.8 Economic & Community Development Report – Prepared by Terry Sanders

Meetings Attended

13/10/2011 – Yaapeet Community Consultation Visit
18/10/2011 – Regional Development Australia Workforce Development Research Project
19/10/2011 – Regional Victoria Living Expo Information Session, Melbourne
20/10/2011 – Wimmera Mallee Tourism Steering Committee
21/10/2011 – Stick Shed Steering Committee, Ballarat
27/10/2011 – Yarriambiack Tourism Association
02/11/2011 – Wimmera Development Association (WDA) – Regional Victoria Living Expo

Economic Development

Workforce Development in the Grampians Region

Early this year, Regional Development Australia (RDA) Grampians met with industry at roundtables in both the Central Highlands and Wimmera Regions. One key issue identified was having a skilled workforce that enabled growth and investment within our region.

As a result, RDA Grampians in partnership with University of Ballarat and Skills Victoria is undertaking a “Workforce Development in the Grampians Region” research project.

The project will identify emerging directions for the Manufacturing, Health, Agriculture and Tourism sectors and how education and training providers can best anticipate and meet emerging workforce development needs.

I attended the recent project information session in Horsham and have provided details of related studies that have been completed and industry contacts for inclusion in the proposed focus group discussions.

Regional Victoria Living Expo 27 – 29 April 2012 Melbourne Convention & Exhibition Centre

The Regional Victoria Living Expo is an added component to the “Living, Working, Investing in Regional Victoria” campaign and will be supported by an extensive media campaign to encourage Victorians, particularly Melbournians, looking for an alternative lifestyle, to visit the Expo and find out about housing affordability, job vacancies, investment prospects, education, sporting, cultural and recreational opportunities across regional Victoria.

The Expo will be held each year for the next four years and each participating regional Council will receive \$20,000 from Regional Development Victoria to cover the cost of display and collateral material.

The Wimmera Mallee Councils including Buloke, Hindmarsh, Horsham, West Wimmera and Yarriambiack, have decided to join forces to mount a combined display. Meetings are currently being planned by WDA to finalise the details.

Murtoa Stick Shed

On Friday 21 October 2011, Mayor John Kemfert and I attended the first meeting of the Stick Shed Steering Committee in Ballarat.

This committee was formed at the conclusion of the Future Management Workshop organised by the Heritage Council and held in Murtoa on 23 September 2011, with the main issues identified as:-

- Access
- Ownership
- Terms of Reference for the management body
- Funding
- Physical infrastructure/services/limitations
- Potential usage and usage models – vision

The Steering Committee's major concern was to progress the access issue and the Graincorp representatives were very supportive.

A number of options were proposed, including accessing part of Council's depot land. These are to be investigated and report presented at the next meeting.

Industrial Estates

David Young is working on both the Warracknabeal and Hopetoun Industrial Estate subdivisions, with the Hopetoun exercise expected to be delayed due to the re-zoning process.

Housing Development

The advice from the Department of Planning & Community Development (DPCD) is that we may have to update our "Small Towns Residential Development Study" completed in August 2005 to justify the proposed re-zoning of additional land to residential.

David Young is holding further discussions with DPCD in relation to this matter.

Woomelang Travellers Rest

Negotiations continue.

Tourism

Yarriambiack Tourism Association

The Association met on 27 October but unfortunately due to a number of last minute apologies, did not have a quorum. However, we were able to progress the town tourist maps (which should be available before Christmas) discuss the need for a tourist signage review and plan the next familiarisation tour.

Members were also updated on developments regarding the Wimmera Mallee Tourism Steering Committee.

Wimmera Mallee Tourism Association

The Steering Committee met on 20 October with Jo Bourke, CEO, Wimmera Development Association and Justine Linley, CEO, Northern Grampians Shire.

The main objective was to discuss the implementation of the Regional Strategic Plan's Tourism Objectives and the role of the Steering Committee in that process.

Y-Fest 2012

The Y-Fest Promotions Committee met on 8 November for the first time to plan next year's event.

As Council would be aware, the event continues to grow each year and the committee is keen to continue that trend.

For 2012, we hope to encourage more local businesses and service organisations to participate in the parade and that includes the schools.

COMMUNITY DEVELOPMENT**Community Projects****Community Facility Funding Program 2012/2013**

Waiting on the outcome of our three applications under this program.

Department of Planning & Community Development (DPCD) has now carried out site visits for each project.

Sustainable Sports Grounds Program 2011/2012

Waiting on the outcome of our application under this program.

Regional & Local Community Infrastructure Program 2010/2011

The Final Reports for the Beulah Playgroup and Hopetoun Skate Park Projects, funded through this program have now been submitted.

Grant Acquitted

The Tempy Settlers Commemoration Sign project acquittal documentation has been prepared and forwarded to the Public Records Office Victoria.

On Thursday 13 October an unveiling of the new signage was held at the Tempy Wayside Stop area with a very large crowd in attendance (approx. 100 attendees) which is a fantastic turn-out for a small rural community. The sign certainly attracted a great deal of interest from young and old alike and has generated much community enthusiasm for the second stage of the project (construction of the Commemorative Wall).

Warracknabeal Town Hall Project

It is anticipated all works associated with the Small Towns Development Fund grant will be concluded by 1 November.

Weir Pools and Lake Lascelles Project

Works at the Warracknabeal, Brim and Beulah Weir Pools and Lake Lascelles, funded through the Sustainable Small Towns Development Fund, are progressing smoothly, with approximately 75% of the work completed.

Minyip Fourth Tennis Court Project

The new court's concrete base has now been poured and the plexipave surface and line markings will be completed once the weather warms up. This project is funded through the Community Facilities Funding Program – Minors.

Murtoa Football Change Rooms Project

This project is funded through the Country Football and Netball Club and the old building has now been demolished and a Planning Permit submitted for the new building with work/drawings underway for the Building Permit Application. It is hoped the new concrete base can be poured prior to the end of November.

Woomelang Netball Court Extension

The concrete extensions are due to be poured at the end of October with the rebound ace surface and court line marking to be completed when the weather warms up. This project is also funded through the Country Football and Netball Program.

11 REPORTS FOR DECISION

11.1 Finance Report – Prepared by Anita McFarlane

The Finance Report as at October 2011 will be tabled.

RECOMMENDATION

The Finance Report as at October 2011 be received.

Moved Cr J Wise seconded Cr K Zanker that Finance Report as at October 2011 be received.

Carried

11.2 Revenue Report – Prepared by Chantelle Pitt

The Revenue Report as at November 2011 will be tabled.

RECOMMENDATION

The Revenue Report as at November 2011 be received.

Moved Cr K Zanker seconded Cr A McLean that the Revenue Report as at November 2011 be received.

Carried

Moved Cr A McLean seconded Cr G Lovel that standing orders be suspended at 10:20am.

Carried

Moved Cr G Lovel seconded Cr J Wise that standing orders be resumed at 10:40am.

Carried

11.3 Dangerous Dog Policy (Dog Attack Prevention Strategy) – Prepared by Greg Wilson

This policy will allow Council under Section 17 of the Domestic Animals Act 1994 to refuse registration of declared dangerous or restricted breed dogs within the Shire of Yarriambiack.

RECOMMENDATION

That Yarriambiack Shire Council adopts the Dangerous Dogs Policy.

Moved Cr A McLean seconded Cr K Zanker that Council adopt the Dangerous Dog Policy (Dog Attack Prevention Strategy).

Carried

DOG ATTACK PREVENTION STRATEGY

OBJECTIVE

- Council will implement a dog attack prevention strategy; to protect the health and safety of the Yarriambiack community and to eliminate any unacceptable risk to humans and animals caused by dogs that have inflicted serious injury or have a propensity to inflict serious injury.

PRINCIPLE/PROCEDURE

- Council may refuse to register dogs declared dangerous [other than guard dogs] including those deemed a restricted breed dog, whose importation into Australia is prohibited under the customs [prohibited imports] regulations 1956 of the Commonwealth.
- Council will afford dog owners the appeal rights and processes available to them in accordance with the Domestic animals Act 1994. This policy will apply to any dog declared dangerous from [insert date] and any restricted breed dog upon a new application for registration from the date of commencement of this policy. Each case of refusal of registration will be assessed on its merits.
- Implement the dog attack prevention campaign based on education, awareness and enforcement under current legislation.
- Advocate the necessary changes to strengthen State Government Legislation in regard to dangerous / restricted breed dogs through MAV Local Government Authorities Bureau of Animal Welfare and animal welfare agencies.
- If a declared dangerous or restricted breed dog is to be registered within the Yarriambiack Shire, a \$500.00 registration fee per year will apply to each animal.

Ray Campling
Chief Executive Officer

Council Adoption Date	09 November 2011
Minute No.	11.4
Review date	August 2011
Department / Area	Community Services / Local Laws
Responsible Officer	Coordinator Environmental Health/Local Laws

11.4 Emergency Management – Appointment of Deputy Municipal Emergency Resource Officers – Prepared by James Magee

Under Council's Municipal Emergency Management Plan, various officers are nominated to perform roles as outlined in the plan. Due to staff changes, I wish to nominate additional officers to the role of Deputy Municipal Emergency Resource Officers.

RECOMMENDATION

That the following staff be adopted as Deputy Municipal Emergency Resource Officers:-

- Geoff Harvey
- Zoe Heard
- John Boehm

Moved Cr J Wise seconded Cr K Zanker that the Yarriambiack Shire Council adopt the above recommendation.

Carried

11.5 Proposal to Gravel Ailsa Road – Prepared by Michael Evans

Council has received requests from five different parties concerned over the condition and access of the gravelled section of Ailsa Road. The segment concerned is from Ailsa Wheat Road to the Borung Highway.

The main issues of concern from the five parties are:-

- Need for access to a different school bus route in all weather conditions, as the old bus route was cancelled due to low passenger numbers, resulting in non viable bus route
- Use of road to transport grain to Dimboola during harvest
- Road is frequently used as a link road
- After the flooding in 2010-2011 the only access to Warracknabeal was via this road and it was the only road useable for the transport of grain during harvest for that period of time
- Safety concerns due to road deterioration and a Grampians Wimmera Mallee Water main burst resulting in damaged sections.

Council records indicate this section of the road was downgraded in 2004.

Last year Council changed the segment to a Priority Maintenance (PM) classification on the Road Hierarchy making it eligible to be graded more regularly than other roads.

The Ailsa Road segment is 8.79 km long (Pullen's Road to Elsom's Road) with 6.96 km needing to be re-constructed and re-gravelled at a cost of \$129,500 to lift the classification to a Rural Access 2 RA2. A further 1.83 km (Ailsa Wheat Road to Pullen's Road) is already at Category RA2 (PM) but will need to be placed on the re-sheeting program in the next year or two.

For one party to take their children into town on wet days, the distance travelled would be approximately 17 kms to the school from their property gate.

Of the five parties who submitted letters, only one has a primary farm on the Ailsa Road.

Council could decide to make this section of road a Special Purpose (SP) road and allow the road to be upgraded, as per the changes made in the hierarchy review last year. Each road that is a Special Purpose (SP) category in the road hierarchy is decided on an individual basis by Council.

RECOMMENDATION

Based on Council's Road Hierarchy and Policy, I recommend that the request be denied and that the road be patched and graded as soon as time and resources allow.

Moved Cr A McLean seconded Cr J Wise that Council deny the above request and that the road be patched and graded as soon as time and resources allow, based on Council's Road Hierarchy and Policy.

Carried

11.6 Renaming of Webbs Road Murtoa to Rosecrea Road and Forest Home Road Murtoa – Prepared by Michael Evans

Council has received confirmation that all three parties concerned with the renaming of Webbs Road, have come to an agreement in relation to the proposed name change. The road will be split in two with the first half of the road to be named “Roscrea Road” and the second half of the road to be named “Forest Home Road”.

Council has contacted Geographic Names on the proposal and even though it doesn't meet their guide lines the advice is they will accept this proposal.

Council is not required to re-advertise the proposed name change as all parties concerned have agreed upon the change.

RECOMMENDATION

I recommend that Council adopt the request to change the name of Webbs Road to Roscrea Road and Forest Home Road as per the proposed plan tabled and resume the process of applying to Geographic Names to change the road name.

Moved Cr G Lovel seconded Cr K Zanker that Council adopt the request to change the name of Webbs Road to Roscrea Road and Forest Home Road as per the proposed plan tabled and resume the process of applying to Geographic Names to change the road name.

Carried

Due to a Declaration of Conflict of Interest in regards to item 11.7 Cr J Wise left Council Chambers at 10:50am.

11.7 Community Group Financial Assistance Scheme – December 2011- Prepared by Dennis Smith

Background

Council received 17 applications for funding under this scheme of which 15 conformed to the criteria (one applicant had received funding in the June 2011 round and one applicant was not a community group). The total budget for this round is \$10,000 therefore all remaining applicants receive the maximum amount of \$500.

Summary of Applications Received – December 2011 Round of Funding

Community Group	Project Details	Amount Requested	Amount Recommended
Brim Active Community Group	Christmas Function	\$500	\$500
Hopetoun Progress Association	Seating/table for skate park	\$500	\$500
Hopetoun Tennis Club	Purchase metal storage cabinets	\$500	\$500
Minyip Cricket Club	Purchase refrigerator	\$500	\$500
Minyip Progress Association	Purchase signage for Minyip Park project	\$500	\$500
Minyip Tennis Club	Purchase blinds	\$500	\$500
Murtoa Lake Marma Committee	Bench seats and picnic tables around the Lake	\$500	\$500
Murtoa S.L.A.A.M.	Replace kitchen doors	\$500	\$500
Warracknabeal Historical Centre	Translation of diaries into a journal	\$500	\$500
Warracknabeal St. Marys Parents Club	Purchase new oven	\$500	\$500
Warracknabeal Town Hall Committee	Purchase small laptop computer	\$500	\$500
Warracknabeal Wheatlands Museum	Purchase of paint	\$500	\$500
Woomelang & District Development Assoc.	Town beautification project	\$500	\$500
Yaapeet Community Club	Purchase outdoors tables and seating for camping area	\$500	\$500
Yaapeet Tennis Club	Purchase trophy cabinet	\$500	\$500
	Total		\$7,500

RECOMMENDATION

That Council approve the payment of the above grants.

Moved Cr H Ballentine seconded Cr K Zanker that the Yarriambiack Shire Council approve the above grants.

Carried

Cr J Wise returned to Council Chambers at 10:55am.

11.8 SHARE Program (Sustainable Healthy Adaptable Resilient Engaged) – Prepared by Marianne Ferguson

SHARE COMMUNITY GRANT

The SHARE Community Grant Evaluations took place on Friday 14 October 2011. The evaluation panel consisted of Cr Andrew McLean; Cr Helen Ballentine; Woomelang community member, Melissa Mitchell; Community Services Manager, Gavin Blinman; Community Projects Co-Coordinator, Dennis Smith and Community Development Officer, Marianne Ferguson. Although DPCD Community Engagement Coordinator - Grampians Team, Lauren Scully was not in attendance, her feedback regarding the applications was taken into consideration. 41 applications were assessed with 18 applications recommended for funding. A total of \$27,478 including GST is proposed to be distributed amongst successful projects across the Shire.

SHARE Community Grants Round 2 – Evaluation Meeting 14.10.11		
NAME OF ORGANISATION	DESCRIPTION OF REQUEST	FUNDING ALLOCATED
Beulah Bowling & Croquet Club Inc	Annual Men's Invitation Fours Event – printing/ advertising/catering	\$550
Beulah Football Club Inc	Purchase of pie warmer and two BBQ's	\$1100
Beulah Memorial Hall Committee	Maintenance – funding to repair leaking roof on supper room and front section of hall. Toilet block needs updating eg. wash benches and toilets. Fix and paint kitchen cupboards. Ongoing maintenance in general.	\$1100
Beulah Public Purpose Creek Committee	Design and purchase an entrance sign for the Caravan Park	\$500
Brim Lions Club Inc	Fishing Competition at the Creek – Advertising and BBQ	\$330
Hopetoun & District Traders Association	Purchase Christmas decorations for the shopping precinct in Hopetoun.	\$1000
Hopetoun Football Club	Purchase a defibrillator	\$2300
Lascalles Progress Association	Purchase undercoat, sealer and topcoat for north wall of toilet block	\$2200
Minyip Memorial Hall	Upgrade cooking facilities (cook-tops and ovens) in hall kitchen	\$2498
Patchewollock Gun Club	Update the throwers to Australian Safety Standards and erect fencing for OH&S Safety Regulations	\$1650

YARRIAMBIACK SHIRE COUNCIL

COUNCIL MEETING

MINUTES

09 NOVEMBER 2011

NAME OF ORGANISATION	DESCRIPTION OF REQUEST	FUNDING ALLOCATED
Rupanyup Nursing Home Support Group Dunmunkle Health Services	2012 Music Project – Finance part of the finger food luncheon/morning tea.	\$500
Warracknabeal Croquet Club	Social days, purchase trophies and BBQ's	\$500
Warracknabeal Hockey Club	Purchase safety equipment including goal keeping equipment, first-aid kits and protective equipment for junior players	\$1100
Warracknabeal RSL	Concrete slab and footpath for outdoor rotunda and BBQ area.	\$3000
Warracknabeal Trap & Skeet Club Inc	Funding to enclose the open side of clubroom shed with glass and the installation of a heater	\$2250
Woomelang & District BNC	Paint & Renovate Court House for occupancy of the new 'Men's Shed'	\$4400
Woomelang & District Development Association	Purchase gravel to pave walking tracks around the Cronomby Tanks recreation area in Woomelang	\$1000
Woomelang Police Emergency Services Day	To engage local volunteer catering groups to provide food and refreshments for exhibitors at the Bi-Annual Emergency Services Day, held 21, 22 & 23 June 2012	\$1500
	Total	\$27,478 incl. GST

RECOMMENDATION

That Council approve the above nominated projects for the SHARE Community Grants and distribute funds accordingly.

Moved Cr J Wise seconded Cr K Zanker that the Yarriambiack Shire Council approve the above nominated projects for the SHARE Community Grants and distribute funds accordingly.

Carried

11.9 Planning Application – Prepared by David Young**Planning Application: TP 22-11**

Applicant's Name:	Robin Barber				
Land/Address:	Lot 25 Layfield Street Rosebery				
Owners Name:	Cheryl Dabonde c/- Hayley Cooper				
Proposal: Planning Scheme Definition	Re-Erection of Dwelling				
Previous Planning applications	Nil	Any covenants? Any s173 agreements?	<input type="checkbox"/> No		
Why is a planning permit required?	Clause 35.07-1 Section 2 Land under 40 Hectares				
Zone	FZ	Overlay	ESO 2	Clause(s)	

Proposal

The Owner wishes to erect a dwelling on the land. The dwelling will not be associated with a rural use. The dwelling will be in accordance with the plans submitted. (See Appendix 1.0)

Subject site & locality

The land is relatively flat and contains little vegetation. Power lines traverse adjoining properties which can be extended to service the proposed dwelling. Currently there is limited access to the property near the location of the proposed dwelling.

The land is part of the old Rosebery township which consists of a number of small vacant allotments. There is an old church, now used for the sale of art and food; a CFA building and two dwellings to the north. The majority of roads are dirt and the one to the subject land will require upgrading to make it comply with the requirements under the planning scheme if approved by Council. (See Appendix 2.0)

Public Notification

The application was required to be advertised pursuant to Section 52 of the Planning and Environment Act 1987 as the proposed application may cause detriment to surrounding properties.

Council has received one objection to the application. This is based on servicing requirements and conflicts between the applicant's animals and the objector's land. (See Appendix 3.0)

Referrals

External Referrals/Notices Required by the Planning Scheme:

Referrals/Notice	Advice/Response/Conditions
Section 55 notices	Nil

Assessment

The zoning of the land and any relevant overlay provisions

The land is zoned Farming. Under the provisions of this zone a permit is required for a dwelling.

Purpose of Farming Zone

- To implement the State Planning Policy Framework and the Local Planning Policy Framework, including the Municipal Strategic Statement and local planning policies
- To provide for the use of land for agriculture
- To encourage the retention of productive agricultural land
- To ensure that non-agricultural uses, particularly dwellings, do not adversely affect the use of land for agriculture
- To encourage use and development of land based on comprehensive and sustainable land management practices and infrastructure provision
- To protect and enhance natural resources and the biodiversity of the area

35.07-2 Use of land for a dwelling

A lot used for a dwelling must meet the following requirements:

- Access to the dwelling must be provided via an all-weather road with dimensions adequate to accommodate emergency vehicles
- The dwelling must be connected to a reticulated sewerage system or if not available, the waste water must be treated and retained on-site in accordance with the State Environment Protection Policy (Waters of Victoria) under the Environment Protection Act 1970
- The dwelling must be connected to a reticulated potable water supply or have an alternative potable water supply with adequate storage for domestic use as well as for fire fighting purposes
- The dwelling must be connected to a reticulated electricity supply or have an alternative energy source
- These requirements also apply to a dependent person's unit

35.07-6 Dwelling issues

- Whether the dwelling will result in the loss or fragmentation of productive agricultural land
- Whether the dwelling is reasonably required for the operation of the agricultural activity conducted on the land
- Whether the dwelling will be adversely affected by agricultural activities on adjacent and nearby land due to dust, noise, odour, use of chemicals and farm machinery, traffic and hours of operation

- Whether the dwelling will adversely affect the operation and expansion of adjoining and nearby agricultural uses
- The potential for the proposal to lead to a concentration or proliferation of dwellings in the area and the impact of this on the use of the land for agriculture

The State Planning Policy Framework (SPPF)

The SPPF has general guidelines relating to development of Dwellings in Farming Zones. It does emphasise the need to protect rural land from inappropriate uses, infrastructure and rural activities. It also emphasises the need to consider effects on surrounding farm land.

Local Planning Policy Framework

22.01-1 Urban Growth Boundaries

This policy applies to the urban edge of towns as defined by the existing extent of township and residential zones.

Policy Basis

The Yarriambiack Shire is characterised by a number of urban centres and small towns located in the midst of productive agricultural areas. The maintenance of a clear distinction between urban and rural areas is essential to efficient township development and continued agricultural production.

Objectives

- To provide a high quality urban environment and encourage the consolidation of existing township areas by maximising development opportunities within these areas
- To lessen conflict between agriculture and urban land uses
- To establish an urban edge to all settlements based on current zonings, to provide certainty for development in urban areas and provide certainty for ongoing agricultural production in rural areas

Policy

It is policy that:

- New residential use and development will be encouraged to locate in urban centres within existing designated urban zones
- Urban use and development outside identified urban zones will be strongly discouraged
- Land in agricultural production will be protected from adjoining land use

21.08-1 Settlement

The settlement pattern of Yarriambiack Shire is characterised by a number of small towns, each with its own identity. Factors contributing to the character of these townships include unique rural settings, built heritage and a rich community culture. The uniqueness and quality of life offered in each township is of great importance to the people of the Shire.

Some of the towns have lost the threshold population size to attract and maintain the necessary services and facilities to provide a quality of life to residents and the surrounding farming district. Given the preferred land use and development vision based on population thresholds and factors of location, environment and entrepreneurial initiative to rejuvenate towns, the settlement strategy is to consolidate development and to provide infrastructure within towns in order of highest potential as follows:

- Warracknabeal
- Murtoa
- Hopetoun
- Minyip
- Rupanyup
- Beulah
- Woomelang

Other settlements including Patchewollock, Brim, Yaapeet, Tempy, Speed and Lascelles will continue to be supported.

Strategies

- Encourage consolidation of development and growth to take place within the identified townships with potential so as to:
 - maximise utilisation of existing infrastructure investment;
 - support infrastructure improvement;
 - improve and extend the range of goods, services and amenities for both urban and rural communities;
 - increase job opportunities;
 - facilitate further industrial and commercial development; and
 - avoid development conflicts within agricultural areas for non-agricultural purposes
- The Shire, in partnership with the community, must ensure equitable access to minimal provision of service delivery by government and private sectors to maintain a safe living environment.
- Encourage development and provide incentives for development in townships.
- Protect existing residential amenity and provision of housing choice.
- Encourage uses of vacant housing stock, which do not compromise residential amenity.
- Ensure that recreational facilities are maintained especially those with sensitive environments and the historic buildings and items throughout the Shire.

Implementation

- Through the planning scheme, by appropriate application of zones and overlays and the application of the policies in this scheme by the responsible authority in administering the planning scheme.
- In administering the planning scheme, the responsible authority will take account of the general strategies and the strategies relating to particular settlements, in making decisions on proposals to use and develop land.
- By defining the edge between the urban and rural land uses around the towns and containing all development within townships.

- Conduct an inventory of threshold populations needed to support government and private services and facilities to monitor various service provisions to townships.
 - Direct future provision of private and government services and physical infrastructure to townships identified as having highest potential to maintain population base.
-

Discussion

The subject application does not meet the requirements nor respond to the purpose of the Farming Zone. Both the State (SPPF) and Local Planning Policy Framework (LPPF) discourage dwellings in farming areas that do not serve or support agricultural activities. The application does not provide for the use of the land for an agricultural purpose. The LPPF also discourages development in townships other than those identified in the Planning Scheme (the scheme).

The subject land forms part of the old Rosebery township and the dwelling is not required for the operation of the agricultural activity conducted on the land nor on adjoining land. There is the real potential for the proposal, if approved, to lead to a concentration of dwellings in the immediate area that are also not used for agricultural purposes. There are approximately 35 empty allotments in immediate proximity that potentially could be built on.

A main issued for Council consideration is if the proposed dwelling will be adversely affected by agricultural activities on adjacent and nearby land. This can be from dust, noise use of chemicals and farm machinery, traffic and hours of operation. There have been many issues in farming areas throughout the State from people moving into rural areas but expecting residential lifestyles.

The SPPF in general, emphasises the need to protect rural land from inappropriate use, infrastructure and rural activities. It also emphasises the need to consider effects on surrounding farm land.

The LPPF policy 22.01-1 clearly identifies urban growth areas throughout the Shire. One of the objectives of the policy is "To establish an urban edge to all settlements based on current zonings, to provide certainty for development in urban areas and provide certainty for ongoing agricultural production in rural areas." The policy of Council is clear in this matter:

"Policy

It is policy that:

- *New residential use and development will be encouraged to locate in urban centres within existing designated urban zones*
- *Urban use and development outside identified urban zones will be **strongly discouraged***
- *Land in agricultural production will be protected from adjoining land use"*

Council policy 21.08-1 Settlement states that "Some of the towns have lost the threshold population size to attract and to maintain the necessary services and facilities to provide a quality of life to residents and the surrounding farming district. Given the preferred land use and development vision based on population thresholds and factors of location, environment, and entrepreneurial initiative to rejuvenate towns, the settlement strategy is to consolidate development and to provide infrastructure within towns in order of highest potential"

It is clear from this that Rosebery is not one of the towns listed for Council to encourage development. Furthermore the strategies for this policy clearly outline issues Council should consider and actions it should take in relation to development.

These strategies are as stated:

“Encourage consolidation of development and growth to take place within the identified townships with potential so as to:

- maximise utilisation of existing infrastructure investment;
- support infrastructure improvement;
- improve and extend the range of goods, services and amenities for both urban and rural communities;
- increase job opportunities;
- facilitate further industrial and commercial development; and
- avoid development conflicts within agricultural areas for non-agricultural purposes.”

In addition to the requirements of the Planning Scheme, Council needs to consider the ongoing cost associated with servicing the dwelling, road maintenance, waste disposal etc.

Summary

The Yarriambiack Planning Scheme is clear in its direction not to approve dwellings in old townships that do not have any association with farming activities. The scheme identifies those locations that Council should support development and the reasons why.

Based on the above it is recommended that Council refuse the application.

RECOMMENDATION

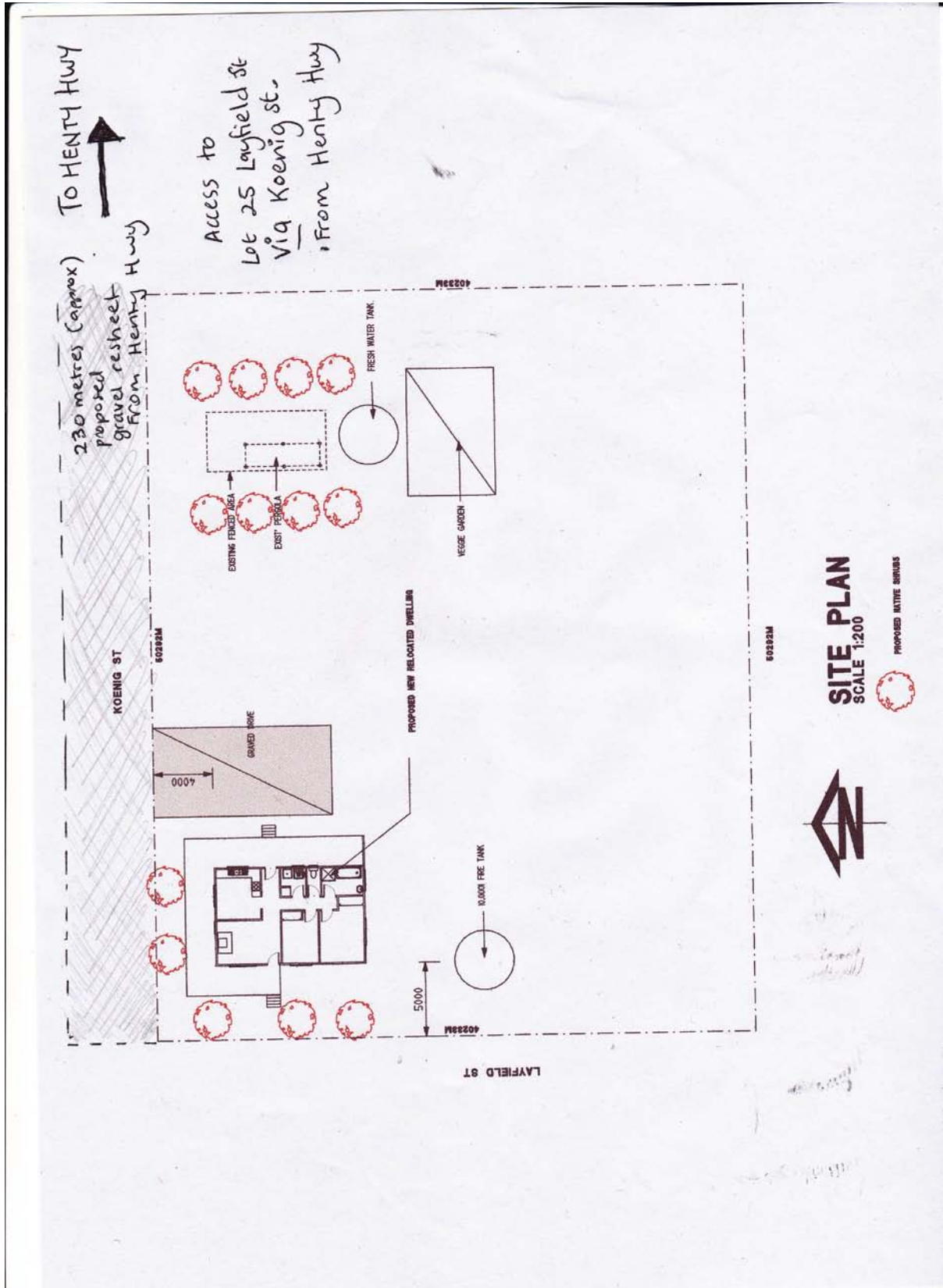
That Council having considered all the matters required under Section 60 of *the Planning and Environment Act 1987* decides to Refuse to Grant a Permit for the Use and Development of the land for a Dwelling at Lot 25 Layfield Street Rosebery for the following reasons:

- 1) The proposed development is not in accordance with the purpose of the Farming Zone
- 2) The proposed development is not in accordance with Council’s policies in relation to development within the Shire
- 3) The proposed Use and Development will create a conflict between rural and urban environments.

Moved Cr G Lovel seconded Cr K Zanker that Council refuse to grant a permit for the use and development of the land for a dwelling at Lot 25 Layfield Street Rosebery.

Carried

Appendix 1.0 Development Plan

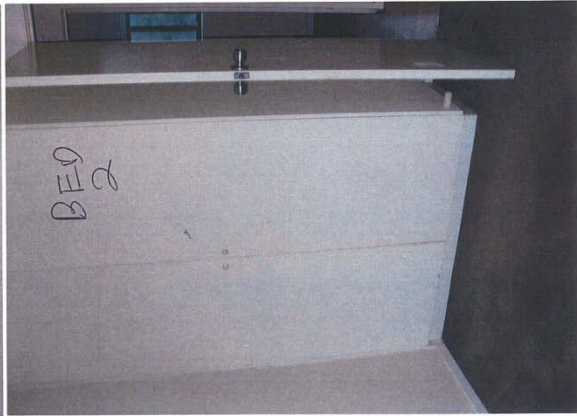


YARRIAMBIACK SHIRE COUNCIL

COUNCIL MEETING

MINUTES

09 NOVEMBER 2011





Appendix 2.0 Township Plan



Appendix 3.0 Letter of Objection

50 837299 3/10/11
Box 104
Hopton
Vic

I MR Pw MITCHELL OF 203
WINDY RIDGE RD ROSEBERY VIC

WOULD LIKE TO PUT IN A
FEW OBJECTIONS.

REFERENCE NO T.P. 22-11

① DOGS DIGGING UP MY
GARDEN

② THERE IS NO POWER.
ON BLOCK

3 THERE IS NO PIPE LINE
WATER. ON BLOCK.

yours

Mr P.W. Mitchell
Box 104
Hopton Vic
3396.

12 GENERAL BUSINESS (including strategic direction and specific issues)

Cr A McLean spoke on road conditions in relation to the Sunraysia Highway.

Moved Cr G Lovel seconded Cr J Wise that Council write and congratulate CEO, John Ackland - Workco, on being awarded – ‘The Life Membership Award of Group Training Australia’.

13 CLOSED SESSION

Moved G Lovel seconded Cr K Zanker that Council move into Closed Session.

Carried

Moved Cr A McLean seconded Cr K Zanker that Council move back into Open Session.

Carried

Moved Cr G Lovel seconded Cr J Wise that Council adopt Item 13.2 of the Closed Session of Council.

Carried

Moved J Wise seconded Cr K Zanker that Council move into Closed Session.

Carried

Moved Cr A McLean seconded Cr H Ballentine that Council move back into Open Session.

Carried

Moved Cr J Wise seconded Cr K Zanker that Council adopt Item 13.1 of the Closed Session of Council.

Carried

14 MINUTES FROM MEETINGS

15 ATTACHMENTS / REPORTS

Yarriambiack Shire Council Income Statement by Resources for October 2011

Income Statement by Department for October 2011

Rates Report – November 2011

Yarriambiack Shire Council Balance Sheet as at 31th October 2011

Map – Proposed Webbs Road Name Change

16 NEXT MEETING

The next meeting of Council will be held on Wednesday 14 December 2011 at 9:30am at Warracknabeal.

17 CLOSE 3:10pm
