

AGENDA OF ORDINARY MEETING OF YARRIAMBIACK SHIRE COUNCIL TO BE HELD ON WEDNESDAY 23 MARCH 2016 AT THE MUNICIPAL OFFICE 34 LYLE STREET WARRACKNABEAL AT 9:30AM

1 WELCOME

2 ACKNOWLEDGEMENT

We acknowledge the traditional owners of the land on which we meet today and pay our respect to both past and present elders.

3 PRAYER

Almighty God, without whom no Council can stand nor anything prosper we ask that you be present and guide us in our deliberations today. We pray that we will be fair in our judgements and wise in our actions and that decisions will be made with goodwill and a clear conscience for the betterment and welfare of the people of Yarriambiack Shire.

Amen

4 PRESENT

Cr R Kingston, Cr T Grange, Cr A McLean, Cr K Zanker, Cr H Ballentine, Cr G Massey, Cr L Woods, Ray Campling (Chief Executive Officer), James Magee (Director Infrastructure & Planning) and Bernardine Schilling (Executive Assistant)

5 APOLOGIES

6 CONFIRMATION OF MINUTES

Ordinary Meeting of Council – 24 February 2016

Closed Session of Council – 24 February 2016

7 DECLARATION OF CONFLICT OF INTEREST

8 BUSINESS ARISING

8.1 Action List from last meeting

Cr A Mclean seconded by Cr H Ballentine moved motion to write to Federal Member Andrew Broad MP and Minister for Communications the Hon Mitch Fifield to revisit possible NBN service for Woomelang.

Letter sent 26 February 2016 Ref Bs:39-2016, C110/12

8.2 Ongoing and Pending Action List

9 PETITIONS

10 REPORTS

Corporate Reports

- 10.1 Mayor's Report
- 10.2 Councillor's Reports
- 10.3 Chief Executive Officer – Activity Report
- 10.4 Director Infrastructure & Planning Report
- 10.5 Capital Works Program Report
- 10.6 Community Services Report
- 10.7 Infrastructure Services Report
- 10.8 Community Projects Report

11 REPORTS FOR DECISION

- 11.1 Finance Report
- 11.2 Revenue Report
- 11.3 Request for the Closure of Hopetoun Lane 12
- 11.4 Gravel Sources for Re-sheeting of Gravel Roads
- 11.5 Councillor Caretaker Procedure Policy Review
- 11.6 Sport & Recreation Strategy 2016-2025
- 11.7 Council Rate Variation
- 11.8 Murtoa South Drainage

10.1 Mayor's Report – Prepared by Ray Kingston

26 February	Attended North West Municipalities meeting in Edenhope
26 February	Attended Municipal Association of Victoria Strategic Planning Workshop in Edenhope
01 March	YCHANGE Stakeholders meeting - Teleconference
04 March	Attended three Seasonal Conditions meeting in Horsham
06 March	Took part in Gender Diversity panel discussion in Horsham - a couple of opportunities came up out of this to promote the upcoming election and encourage women to stand
07 March	Met with Carlyne Hamdorf from Grampians Women's Health - re her role in Yarriambiack in the area of preventing violence against women
07 March	Attended the Yarriambiack Shire Council's International Women's Day celebration. Shire Office
09-11 March	Attended Rural Councils Victoria Rural Summit in Marysville
11 March	Chaired Lighting the Regions teleconference in Bendigo - project nearing it's conclusion
14-17 March	Wimmera Councils Canberra Delegation meeting - comprehensive report to be provided
18 March	Official Opening of Rural North West Health's redevelopment at Warracknabeal
18 March	Met with the Victorian Governor, the Hon Linda Dessau
18 march	Attended the Victorian Women on Farms Opening Dinner at Hopetoun
20 March	Attended the Victorian Women on Farms Closing Ceremony and Official Handover at Hopetoun
21 March	Presided over Australian Citizenship Ceremonies for Susan Fuhler & Abilash Nedumparamim at the Yarriambiack Shire Council
21 March	Facilitated Beulah's Community Action Plan review at Beulah

10.2 Councillor's Reports**Cr H Ballentine**

- 26 February Spoke at Seasonal Drought Committee meeting in Horsham
- 29 February Chaired Yarriambiack Tourism meeting at Longerenong Homestead
- 06 March Attended the Opening of the Woomelang fire station and SES building
- 07 March Attended the Women in Agriculture Forum at Parliament House
- 18-20 March Chaired the Hopetoun Women on Farms Gathering

Cr G Massey

- 29 February Yarriambiack Tourism meeting at Longerenong Homestead
- 01 March RES Windfarm briefing at Warracknabeal
- 09 March Council Forum
- 18 March Met with the Victorian Governor, the Hon Linda Dessau
- 19 March Attended Hopetoun Women on Farms Gathering
- 20 March Attended Hopetoun Women on Farms Gathering

Cr K Zanker

- 25 February Rural Financial Counselling meeting
- 28 February Attended the North West Municipalities Association meeting
- 28 February Attended the MAV Strategic Planning event in Edenhope
- 10 March Attended WORDS Linking Learning meeting
- 17 March Attended the "Looking over the Farm Gate" dinner and performance in Hopetoun
- 18 March Attended the CAN meeting in Warracknabeal
- 18 March Attending the official 125 year celebration opening of Rural Northwest Health
- 18 March Attended the Hopetoun Women on Farms Gathering Dinner
- 19-20 March Attended the Hopetoun Women on Farms Gathering
- 21 March Attended the Wilkur fire shed discussions

YARRIAMBIACK SHIRE COUNCIL

COUNCIL MEETING

AGENDA

23 MARCH 2016

Cr A McLean

- | | |
|-------------|--|
| 26 February | Attended the Municipal Association of Victoria (MAV) Strategic Work Plan meeting at Edenhope |
| 01 March | Attended RES Wind Farm Information Session in Warracknabeal |
| 04 March | Attended The Grampian Central West Waste and Resource Recovery Group Audit and Board meetings in Melbourne |
| 04 March | Attended the Drought Relief Fishing competition at Hopetoun |
| 05 March | Attended the Cricket Victoria's drought relief day at Tempy, this included a junior's coaching clinic and the displaying of the One Day Cricket World Cup Trophy |
| 06 March | Attended the Official Opening of the Woomelang Emergency Services Complex |
| 09 March | Attended Council Forum |
| 11 March | Attended Wimmera Development Associations Industry Information Day at Grains Innovation Park in Horsham |
| 15 March | Attended the YCHANGE working group meeting in Hopetoun |
| 16 March | Attended and Chaired the Sunraysia Highway Improvement Committee meeting at St Aruad |
| 18 March | Met the Victorian Governor, Linda Dessau at Brim |
| 21 March | Attended the Community Planning Forum at Beulah |

YARRIAMBIACK SHIRE COUNCIL

COUNCIL MEETING

AGENDA

23 MARCH 2016

Cr T Grange

- | | |
|-------------|--|
| 24 February | Attended Council Forum |
| 24 February | Attended the Municipal Association of Victoria (MAV) Strategic Planning Forum at Edenhope |
| 24 February | Attended the Minyip Shocking Arts AGM in Minyip |
| 26 February | Attended the MAV Strategic Planning forum at Edenhope |
| 29 February | Met with Minyip Shocking Arts grants officer and Dennis Smith in Minyip |
| 01 March | Attended RES Windfarm information event in the Yarriambiack Shire meeting room |
| 03 March | Attended the Minyip Progress meeting in Minyip |
| 06 March | Representing the Mayor along with Crs McLean and Ballentine attended the opening of the Woomelang Emergency Service Complex by the Hon Jane Garrett - Minister for Emergency Services at Woomelang |
| 08 March | Attended the Wimmera Development Association Board meeting in Horsham |
| 09 March | Council Forum meeting |
| 15 March | Attended a Police Community Public meeting in Minyip |
| 18 March | Attended a councillor only formal meet and greet for the Victorian Governor, the Hon Linda Dessau AM in Brim |

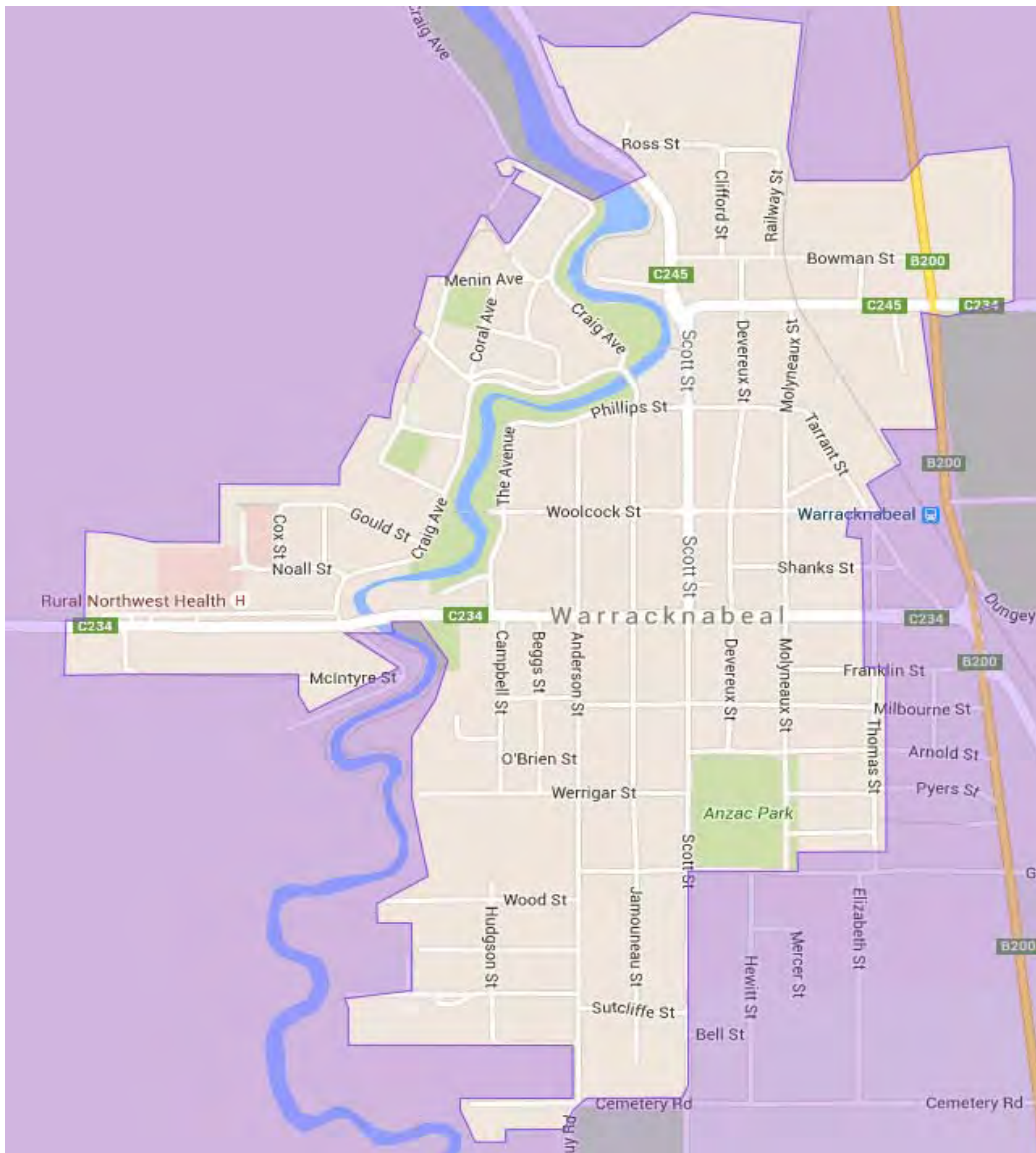
10.3 Chief Executive Officer, Activity Report – Prepared by Ray Campling

- Attended Wimmera Southern Mallee Crime Prevention meeting in Stawell
- Met with CEO Marianne Hendron – Women’s Health Grampians
- Attended the launch of the Brim Silo video at the Brim Sports Centre
- Attended Wimmera Local Government CEO’s meeting in Horsham
- Attended North West Municipalities Association followed by MAV Strategic Plan meeting in Edenhope
- Attended Grampians Regional Management Forum in Ballarat
- Attended Wimmera Southern Mallee LLN meeting at Federation University
- Met with David Leahy, recently appointed West Wimmera Shire Council CEO
- Attended Violence Against Women Regional Strategy in Ballarat
- Met with NWMA Chair Gary Norton – various matters
- Spoke at International Women’s Day Breakfast at Warracknabeal Neighbourhood House
- Met with Governor’s Advisor Mr Lachy Lamour to finalise details re Governor’s visit to the area
- Met with Mark Hogan, Regional Development Victoria – various matters
- Met with Tony Doyle, CEO Hindmarsh Shire – Canberra deputations
- With Deputy Mayor Terry Grange attended Wimmera Development Association meeting in Horsham
- Met with Brad Ead – Council’s Internal Auditor
- With Mayor Ray Kingston attended Rural Council’s Victoria Rural Summit in Marysville
- With Mayor Kingston and other Wimmera Mayors and CEO’s undertook various deputations to politicians at Parliament House, Canberra
- Attended various Hopetoun Women of Farms Gathering 2016 activities

10.4 Director Infrastructure & Planning Report – Prepared by James Magee

NBN Services for Warracknabeal

The Warracknabeal township is listed for connection to NBN in 2017. The exact technology nominated at present is fibre to the node (FTTN), a technology that has greater capacity and speeds than the wireless service. The wireless NBN service is currently available to residents in areas surrounding the township however this has recently expanded into the township zone. See map below:



While there are positive aspects from a timing point of view for the areas affected, it is disappointing that the area with the higher level of service (FTTN) seems to be diminishing without consultation and that business's such as those in the industrial areas will not have access to the best communication technology available.

School Crossing Proposed for Hopetoun

The Hopetoun P12 School have commenced the 2016 school year with both primary and secondary students located at the Dodgshun Street (formerly high school) campus. Council have been requested by the Principal to install a children's crossing. Design works have been done and a proposed location marked on ground. The school is notifying nearby residents and inviting discussion and comments by 22 March 2016.

V/LINE Bus Stop Murtoa

Council has secured funding for a second bus stop in Murtoa. The stop will be on the southern side of the street opposite the existing site. The works are expected to be done in May 2016.

Green Army

Tree planting works this month have been focussed on the Rupanyup and Hopetoun Transfer Station sites. Dripper systems have been installed at these sites as well. Training this month included a chemical users course, an emergency evacuation exercise and a workshop on the drug Ice.

For the next month participants will be finishing off the last of the trees at Hopetoun Transfer Station and starting weed control at Beulah including treatment of cactus. There will also be some bindii eradication works done at the Murtoa Racecourse.

New Fuel Outlet for Rupanyup

Riordan Fuels have been granted a planning permit for a stand alone card operated diesel tank at Rupanyup. The area will have good access for larger vehicles and has been promoted by a group of local farmers for many years. Council will lease an area of its depot to the fuel group to establish the facility. The site will be near the Telstra tower with access off McIntyre's Road.

Environment – Prepared by Geoff Harvey

- Inspected tips
- Arranged treatment for priority weed species
- Inspected Yarto Road and arranged treatment for weeds
- Attended meetings with Green Army supervisor re works and planning
- Projects with Green Army
- Responded to various requests and complaints from ratepayers

Risk & Safety Report to Council – Prepared Barry Sullivan

The development of the new Business Continuity Plan (BCP) is on track, with the management team attending a workshop on 20 January with Jardine Lloyd Thompson (JLT). Vital services to Council operations were recognised and short listed allowing Council to continue to function after a catastrophic event. Sub plans for essential services have been developed and submitted to (JLT) to allow them to continue to develop the BCP.

An electrical Testing and Tagging database has been developed to maintain a central database for all electrical items tested within Council buildings. Thirty two former record books have now been recorded onto the Central database and into a master manual. Record and information folders have been developed for authorised staff to use in the field. Community Services & Development staff have engaged an accredited contractor to start testing and tagging buildings under the responsibility of Community Service staff.

A safety Inspection has been conducted on community buildings currently under renovation to ensure Councils Community Project Supervisors and Contractor (engaged by Council) are compliant with the OHS Act and OHS Regulations. Council Community Project Officers use the; *Guide to Managing OHS on Community Projects Manual* to ensure all safety documentation and systems are in place prior to a project commencing.

With a recent reclassification of Glyphosate Roundup from Group 2B to 2A, a review is being conducted to determine if Council are following best practice standards.

A confidential survey was conducted by Home & Community Service Staff (HACC) to determine safety risk present within their working environment. 100% of staff completed the survey. There were a small number of safety issues highlighted which will be discussed further at the next HACC meeting.

A confidential office health & safety audit form will be issued to all Council staff who work from the main & technical services office to identify both health and safety issues present. The survey is based on a Worksafe Officewise questionnaire. The results of the survey will be compiled and health & safety issues address through the DWG meetings, OHS meetings and consultation with management.

Have reviewed risk assessments on future events to occur within Yarriambiack Shire Council to ensure the event organisers have covered all risks for the event.

Further improvements to the risk register filing system documentation to improve the system including scanning and recording several hundred old incident, hazard, near miss and Worksafe reports.

10.5 Capital Works Program 2015/2016 – Prepared by Chris Lehmann

Roads & Streets – Urban Roads				
<i>Project</i>	<i>% Completed</i>	<i>Start Date</i>	<i>Completion Date</i>	<i>Comments</i>
Brock Street Woomelang		May 2016		Improve median strip with new tree and turning areas
Cemetery Road Warracknabeal	100%	February 2016	February 2016	Construct and seal 4 metres wide, 200 metres long from Anderson Street heading west (near Mens Shed)
Cook Street Woomelang		April 2016		Construct and seal 5.5 metres wide, Roberts Street to Church Street
Gould Street Warracknabeal	100%	February 2016	February 2016	Construct and seal 7 metres wide Cox Street to Allan Street
Long Street Warracknabeal	100%	February 2016	February 2016	Construct and seal 4 metres wide Dungey Street to Dally Street
Market Street Minyip	100%	March 2016	March 2016	Construct and seal shoulder 2.5 metres wide Foundry Street to McLeod Street
Mill Street Minyip	100%	July 2015	August 2015	Willmores
Roberts Street Woomelang		May 2016		Construct and seal 5.5 metres wide, Brock Street to Cook Street
Scott Street Warracknabeal	100%	February 2016	February 2016	Construct and seal 15 metres wide at Arnold Street intersection
Smith Street Warracknabeal	100%	February 2016	February 2016	Construct and seal 4 metres wide from Dungey Street
Taylor Street Warracknabeal	100%	January 2016	January 2016	Construct and seal 4 metres wide Anderson Street to Secondary College

Roads & Streets – Rural Roads				
<i>Project</i>	<i>% Completed</i>	<i>Start Date</i>	<i>Completion Date</i>	<i>Comments</i>
Banyena Pimpinio Road	100%	October 2015	December 2015	Reconstruct and widen seal to 6.6 metres, total distance 2.8 kms (2 jobs). Job starts at Murtoa Minyip Road heading east
Brim West Road	100%	December 2015	December 2015	Reconstruct seal (4 metres), two sections, total distance 2.86 kms. Job between Fishers Road and Warracknabeal Rainbow Road
Dimboola Minyip Road	40%	March 2016	April 2016	Reconstruct seal to 6.6 metres, length 1.2 kms, works start at Barrat Quarry Road heading east
Gama Sea Lake Road	40%	March 2016	April 2016	Reconstruct seal 4 metres, length 2 kms, section starts east of Lascelles North Road heading east
Longerenong Road	100%	February 2016	February 2016	Widen seal to 6.6 metres for 1.94 kms. Starting point 3 kms from Murtoa Glenorchy Road
Patchewollock Temy Road	100%	September 2015	November 2015	Construct 6.6 metre seal, length 1.5 kms, starts end of seal Patchewollock end
Sea Lake Lascelles Road		April 2016		Reconstruct seal 6.6 metres, length 1.3 kms, starts at Shire boundary heading west

Roads & Streets – Rural Roads (continued)				
<i>Project</i>	<i>% Completed</i>	<i>Start Date</i>	<i>Completion Date</i>	<i>Comments</i>
Watchem Warracknabeal Road	100%	September 2015	October 2015	Reconstruct seal to 5.5 metres, length 1.6 kms. Starting 400 metres east of Rupanyup Road and going east
Sheep Hills Bangerang Road	100%	January 2016	February 2016	Construct 4 metre seal, 1.4 kms long, starting end of seal heading north

Gravel Shoulders				
<i>Project</i>	<i>% Completed</i>	<i>Start Date</i>	<i>Completion Date</i>	<i>Comments</i>
Banyena Pimpinio Road		March 2016		Construct 2 metre wide sandstone shoulder both sides of seal. 2 sections, total length 2.7 kms
Brim West Road	100%	March 2016	March 2016	Construct 2 metre wide sandstone shoulder both sides of seal, 3.4 kms long (either side of Hood Lane)
Dimboola Minyip Road		April 2016		Construct 2 metre wide sandstone shoulder both sides of seal, 1 km long
Hopetoun Yaapeet Road	100%	December 2015	January 2016	Construct 2 metre wide limestone shoulder both sides of seal, 3.2 kms in length (either side of Websters Road)
Minyip Dimboola Road		May 2016		Construct 2 metre wide sandstone shoulder both sides, 500 metres in length
Minyip Rich Avon Road		June 2016		Construct 2 metre wide sandstone shoulder both sides of seal, 1.6 kms in length

Gravel Shoulders (continued)				
<i>Project</i>	<i>% Completed</i>	<i>Start Date</i>	<i>Completion Date</i>	<i>Comments</i>
Rosebery Rainbow Road		April 2016		Construct 2 metre wide limestone shoulder both sides of seal, 1 km in length (near Kemp's Road)
Rupanyup Road	50%	November 2015		Construct 2 metre wide sandstone shoulder both sides of seal. 2 sections, total length 8.5 kms
Sea Lake Lascelles Road		May 2016		Construct 2 metre wide limestone shoulder both sides of seal, 1 km in length (east of Maxwells Road)
Sheep Hills Bangerang Road	100%	February 2016	February 2016	Construct 2 metre wide sandstone shoulder both side of seal, 2.1 kms in length
Wyperfeld Park Road		April 2016		Construct 2 metre wide limestone shoulder both sides of seal, 1.5 kms in length (south of Mitchells Road)
Yaapeet Kenmare Road		April 2016		Construct 2 metre wide limestone shoulder both sides of seal, 1.6 kms in length (south of Hopetoun Rainbow Road)

Gravel Re-Sheets				
<i>Project</i>	<i>% Completed</i>	<i>Start Date</i>	<i>Completion Date</i>	<i>Comments</i>
3LK Road		May 2016		Construct 4 metre wide road, 510 metres in length using Great Western Gravel
A Matthews Road		April 2016		Construct 5 metre wide road, 920 metres in length using St Arnaud Gravel
Ailsa Road	100%	October 2015	October 2015	Construct 5 metre wide sandstone road, 1.29 kms in length
Ailsa Wheat Road	100%	November 2015	November 2015	Construct 4 metre wide sandstone road, 1.17 kms in length
Antwerp Road		April 2016		Construct 4 metre wide sandstone road, 440 metres in length
Areegra Exchange	100%	August 2015	August 2015	St Arnaud Gravel
Averys Road	100%	August 2015	August 2015	Hewitts Pit Sandstone
Bangerang Hall Road	100%	July 2015	July 2015	Hewitts Pit Sandstone
Boolite Donald Road	100%	February 2016	February 2016	Construct 5 metre wide road using St Arnaud Gravel
Boundary Road 2		May 2016		Construct 5 metre wide limestone road, 2.26 kms in length
C Readings Road		May 2016		Construct 4 metre wide road, 1 km in length using Great Western Gravel
Cannum 5 Chain Road		June 2016		Construct 5 metre wide sandstone road, 2.5 kms in length
Clyne Road		June 2016		Construct 4 metre wide sandstone road, 1.5 kms in length
Dogwood Road		May 2016		Construct 4 metre wide sandstone road, 1.8 kms in length

YARRIAMBIAK SHIRE COUNCIL

COUNCIL MEETING

AGENDA

23 MARCH 2016

Gravel Re-Sheets (continued)				
<i>Project</i>	<i>% Completed</i>	<i>Start Date</i>	<i>Completion Date</i>	<i>Comments</i>
Echunga Road	100%	February 2016	February 2016	Construct 4 metre wide limestone road, 970 metres in length
Feerys Road	100%	February 2016	February 2016	Construct 4 metre wide sandstone road, 810 metres in length
Gama South Road		June 2016		Construct 4 metre wide limestone road, 960 metres in length
Goslings Road	100%	July 2015	July 2015	Eys Pit Limestone
Guleys Road		May 2016		Construct 4 metre wide limestone road, 1 km in length
Hoffmans Road	100%	August 2015	August 2015	Murphys Pit Sandstone
Hollands Road	100%	August 2015	August 2015	Hewitts Pit Sandstone
Holtkamps Road	100%	July 2015	July 2015	Chapmans Pit Sandstone
Jollys Road		May 2016		Construct 4 metre wide limestone road, 1.5 kms in length
Lah Angle Road	100%	August 2015	August 2015	Hewitts Pit Sandstone
Lascelles North Road	100%	September 2015	September 2015	Construct 4 metre wide limestone road, 4.4 kms in length R2R funding
Lawler Carron Road	100%	July 2015	July 2015	Construct 4 metre wide road using St Arnaud Gravel
McIntyres Road		May 2016		Construct 4 metre wide road, 600 metres in length using Great Western Gravel
Mellis Road	100%	January 2016	January 2016	Construct 4 metre wide road, 2.3 kms in length using St Arnaud Gravel
Moloneys Road		May 2016		Construct 4 metre wide sandstone road, 2.6 kms in length

Gravel Re-Sheets (continued)				
<i>Project</i>	<i>% Completed</i>	<i>Start Date</i>	<i>Completion Date</i>	<i>Comments</i>
Murtoa Cemetery Road	100%	July 2015	July 2015	Chapmans Pit Sandstone
Niewands Road		June 2016		Construct 4 metre wide sandstone road, 1.5 kms in length
Olneys Road		April 2016		Construct 4 metre wide road, 460 metres in length using St Arnaud Gravel
Patchewollock Tip Road	100%	October 2015	November 2015	Construct 4 metre wide limestone road, 380 metres in length
Pullens Road		April 2016		Construct 4 metre wide sandstone road, 1.6 kms in length
Ratray Road	100%	August 2015	August 2015	Hewitts Pit Sandstone
Rosebery Rainbow Road		April 2016		Construct 4 metre wide limestone road, 500 metres in length
Thompsons Road	100%	August 2015	August 2015	St Arnaud Gravel
Turriff West Road		May 2016		Construct 5 metre wide limestone road, 1.9 kms in length
Two Mile Road		April 2016		Construct 4 metre wide limestone road, 2.6 kms in length
V Schultzs Road	100%	January 2016	January 2016	Construct 4 metre wide sandstone road, 760 metres in length
Wallup Hall Road		April 2016		Construct 4 metre wide sandstone road, 2.7 kms in length
Wardles Road West	100%	August 2015	August 2015	Murphys Pit Sandstone
Wathe Reserve Road		April 2016		Construct 4 metre wide limestone road, 860 metres in length
Woods Road		May 2016		Construct 4 metre wide road using St Arnaud Gravel

Gravel Re-Sheets (continued)				
Project	% Completed	Start Date	Completion Date	Comments
Woollards Road	100%	October 2015	October 2015	Construct 4 metre wide limestone road, 1.8 kms in length
Yaapeet South Road	100%	January 2016	January 2016	Construct 5 metre wide limestone road, 2.5 kms in length
Yarto Speed Road		April 2016		Construct 4 metre limestone road, 3.2 kms in length

Footpaths				
Project	% Completed	Start Date	Completion Date	Comments <i>Works part of contract</i>
Beggs Street Warracknabeal		April 2016		Section 1 - Construct 1.5 metre concrete footpath starting at O'Brien Street towards King Street (107 metres) Section 2 - Werrigar Street to O'Brien Street (72 metres)
Craig Avenue Warracknabeal		April 2016		Construct 1.5 metre concrete footpath starting at 80 Craig Avenue to Kokoda Avenue (137 metres)
Lyle Street Warracknabeal		April 2016		Construct 1.5 metre concrete footpath Molyneaux Street to Devereux Street (108 metres)
Lascelles Street Hopetoun		April 2016		Construct 1.5 metre concrete footpath from Police Station to Strachan Street (79 metres)

YARRIAMBIACK SHIRE COUNCIL

COUNCIL MEETING

AGENDA

23 MARCH 2016

Footpaths				
Project	% Completed	Start Date	Completion Date	Comments <i>Works part of contract</i>
Cromie Street Rupanyup		April 2016		Construct 1.5 metre footpath from Woods Street going north (110 metres long)
Main Street Minyip		April 2016		Construct 1.5 metre footpath from 139 Main Street to Walking Track (53 metres)
O'Brien Street Warracknabeal		April 2016		Construct 1.5 metre concrete footpath from Campbell Street to Beggs Street (102 metres)
Phillips Street Warracknabeal		April 2016		Construct 1.5 metre concrete footpath on south side of Wheatlands Warehouse (32 metres)
Strachan Street Hopetoun	100%	March 2016	March 2016	Construct 1.5 metre concrete footpath from Toole Street to gate at Recreation Reserve (115 metres)
Hewitt/Bell Streets Warracknabeal				Pedestrian Crossing
Scott/Bell Streets Warracknabeal				Pedestrian Crossing
Scott/Milbourne Streets Warracknabeal				Pedestrian Crossing

Kerb & Channel				
Project	% Completed	Start Date	Completion Date	Comments <i>Works part of Contract</i>
Cromie Street Murtoa	50%	March 2016		Renew kerb and 4 metre sealed road (Marma to Breen Street)
Dennys Street Hopetoun	100%	August 2015	September 2015	Willmores
Foundry Street Minyip		April 2016		Section 1 - Renew kerb and seal up to kerb (Main to Market Street) Section 2 - Renew kerb and seal to new kerb (Wimmera to Main Street)
McLeod Street Minyip		April 2016		Renew and add new kerb and seal to new kerb (Main to Market Street)
Stewart Street Rupanyup	100%	September 2015	February 2016	Renew kerb and underground drainage and seal up to new kerb

Bridges & Culverts and Drainage				
Project	% Completed	Start Date	Completion Date	Comments
Lloyd/Munro Streets Murtoa				Drainage – Install Pipe & Storm Water Pit
Gladstone Street Beulah				Renew Culverts
Lloyd/Munro Streets Murtoa				Upgrade Drainage System
Phillips Street Beulah				Renew Culverts

- Stabilisation patches in sealed roads (Miller Contracting)
- Drainage pipes and pit cleaning (Rupanyup & Warracknabeal)
- Clean up – Hopetoun Women on Farms Gathering weekend

10.6 Community Services Report – Prepared by Gavin Blinman

Kindergartens

We have interviewed and appointed a new graduate teacher Holly Deveraux to commence at the Warracknabeal Kindergarten on Tuesday, 15 March. Holly will work two weeks with Marilyn Hewitt (who has filled in for this term) to complete an orientation and then takeover in term two. Glenda Hewitt will provide mentoring support two days per week.

All staff recently voted for the new Local Government Early Years agreement. This agreement has been agreed to by the Department of Education & Training, so will be funded and ensure staff pay scales come in line with the school system.

Environmental Health / Local Laws – Prepared by Tim Rose & Greg Wilson

All food business registrations have been completed for the 2016 period. Overall, cooperation from proprietors was good with only a small minority requiring further direction in order to comply with the *Food Act 1984*. One complaint has been received over this period and it has been investigated, with educational material provided to the proprietor. A new business has also opened within the Shire, with the proprietors currently in the process of finalising the requirements of the *Food Act 1984* and the Food Standards Code.

Blue Green Algae monitoring has been increased in recent weeks due to the levels identified in both Lake Lascelles and Lake Marma. Greg Wilson (Local Laws Officer) has undertaken regular sampling since BGA was identified. Lake Lascelles has previously returned results that have only marginally failed. In contrast, Lake Marma results have identified significant levels of toxic BGA species up to four times the limit considered acceptable to public health standards. These lakes will be next sampled on Tuesday, 15 March 2016 with the results expected on Thursday. As per Council's BGA policy, signage at these lakes will not be removed until two declining sample results are received that are below the threshold stated in the BGA Circular.

Onsite waste water applications have continued over this period with a number of progress inspections being conducted in the South of the Shire. Compliance with permit conditions remains high.

A number of Caravan Park inspections have been conducted in order to provide owners with appropriate registration as per the requirements. Applications are currently being assessed and it is anticipated that certificates will be issued in coming days.

It has been a busy month once again for many reasons with a wide range of issues concerning cats and dogs. The cat problem has continued right across the Shire with multiple cats trapped and euthanized, as all of the cats have been wild and unsuitable for re-housing.

There has been a number of wandering dog issues, most have been dealt with by talking to the owners about compliance re fencing and containing animals. Two problem dogs that were aggressive however have been surrendered and euthanized, as it was posed a public safety issue.

There have been five other dogs impounded and surrendered to Council, all these dogs have been healthy friendly dogs and have been adopted out or are waiting adoption.

One issue regarding cars in backyards in town has been finally resolved, however there are now other yards to be investigated, that have an excess of old cars stored in them.

Data for cat and dog renewals has been sent to the printers, these should be posted out shortly, as the only hold up is Australia Post, but we hope this will be done shortly and notices posted within the week, as registrations are due by 10 April.

'Permits to Burn' are now available for farmers for broadacre stubble and windrow burning. Due to the extended heat wave the lifting of restriction has been put on hold for the northern and central parts of the Shire. The next possible date for this will be 21 March, once we have confirmation this will be advertised by Council and the CFA.

Aged and Disability – Prepared by Lisa Dunkley

In the HACC area Council have reviewed the assessment role and added an extra eight hours to bring the role to 30 hours per week this is within our current funding and meets the targets set by DHHS.

Memory Strategies group will recommence this month in Hopetoun and Minyip with guest speakers through out the year.

We are lucky enough to have Anne Watson, who works in Mental Health in Ballarat, engage with the community care workers, on what signs to look for with clients who may be suffering depression.

All Community Care Workers have just completed their Medication updates. Police checks and working with Children checks will be updated also, to maintain staff qualifications as per our State and Federal funding agreements.

Volunteer Meals and Transport – Prepared by Michelle Hallam

Transport

For the month of February 2016, the Yarriambiack Shire completed 11 drives and had two cancellations. This month, elderly were mainly accessing services to Horsham and Ballarat.

The table below is a comparison over the last three years.

February 2016	11 drives, 2 cancellations
February 2015	10 drives, 1 cancellations
February 2014	12 drives

Meals on Wheels

February 2016	793 Meals
February 2015	1,071 Meals

Surveys have been sent out across the Shire to obtain feedback from the service users. Once the surveys have been returned they will be evaluated and feedback will be provided to Lisa, Gavin and to the kitchens involved.

Centre Based Meals

Warracknabeal Centre Based Meal Program has been reviewed. Due to no significant improvement to the total numbers attending and savings in staff costs, we will continue with two days per week until the end of 2016. If demand increases significantly Council will review the program once again. Letters have been sent to service users.

Maternal and Child Health (MCH) – Prepared by Nanette Freckleton and Michelle Schilling

Birth notifications =43

Enrolments = 54

School immunisations commenced in March (year 7 only from 2016). All three vaccines offered at this year level - Gardasil x 3, Varilrix x 1 and Boostrix x 1.

Linking Learning /Lets Read program continues across the Shire with 160 books given at the Key Ages and Stages assessments of 4 months, 12 months, 18 months and 3.5 years.

Babies and Children's immunisations continue monthly and are well attended.

Drought

We have submitted the priority list for the allocation of 10 million between 10 Councils to Regional Development Victoria (RDV), however following the announcement by the state government on Drought funded projects we have sought clarification on a few things.

While Drought funding addresses farming community needs, we will need to work with RDV and Business Victoria to ensure local business also has the capacity to sustain and recover from the drought.

The projects we have submitted will not all fit under the infrastructure projects announced so we will need to look for other funding opportunities.

At the time of this report I am waiting on a response from RDV about the \$120,000 for Local Government, hoping this is for each Council but concerned it's between 10 Councils.

Youth Report – Prepared by Murray McKenzie

- Workshops progressing very well for Endoreic Short Film Festival, please keep 16 April free for the Premier at Lake Lascelles
- Thanks to the Mayor for Assisting with promotion of the Skate events 3 & 24 April - great coverage in local papers
- Continued meetings with the Hands on Learning and Satellite VCAL instructors have been taking place, to initiate our \$30k Co design project
- Funding received for National Youth Week Event - Youth Action Council to support this with a Yarriambiack Young Achiever Awards
- Attended Caravan and Camping Expo in Melbourne went very well
- Attended FReeZA and Push Conference in Melbourne - excellent information to assist with our future programs

SHARE Program 'Sustainable Healthy Adaptable Resilient Engaged' – Prepared by Marianne Ferguson**Brim Public Amenities Upgrade**

Renovations on the Brim Public Amenities are almost complete. Works include a new roof, new fittings and fixtures and polished concrete floors.

Community Planning Forums

Community Planning Forums will be held in Beulah on Monday, 21 March and Woomelang on Monday, 18 April 2016. Mayor Ray Kingston will facilitate the events that will see project ideas collated for the Beulah and Woomelang Community Action Plans.

Small Towns Transformation

The Murtoa Progress Association, Hopetoun Progress Association and Woomelang and District Development Association have submitted expressions of interest to Regional Arts Victoria Small Towns Transformation funding program. Six small towns with populations of 2,000 or less will be eligible for \$350,000 to realise creative projects to transform their community.

Wimmera Mallee Tourism

Wimmera Mallee Tourism attended the Adelaide and Melbourne Camping Shows in February. Wimmera Mallee Tourism is currently investigating the opportunity of TV coverage for the region.

Yarriambiack Tourism

The Yarriambiack Tourism Meeting was held on Monday, 29 February at the Longerenong Homestead. The Yarriambiack Tourism Facebook Page currently has 1,281 'Likes'. The Brim brochure has been reprinted. The Beulah and Hopetoun brochures are currently being altered for reprint. Yarriambiack Tourism is currently working with Juddy Roller, a Melbourne Street Art company to develop destination posters for numerous locations around the Shire. This project is in the initial stages.

10.7 Infrastructure Services Report – Prepared by Bernie Naylor**Asset Engineer – Mick Evans**

- Ongoing development of Council's renewal gap reports for CT Management and the Municipal Association of Victoria
- In conjunction with the Design Engineer, gather information to be able to design Warracknabeal's proposed transfer station
- Assisted IT Consultant with IT issues in the Technical services department
- Developed Gravel Pit mapping and gravel road re-sheeting material zones
- In conjunction with the design engineer, assist community groups with drawing design and funding applications for the Warracknabeal Angling Club and Warracknabeal Aerodrome Transfer Station
- Attended the shared services GIS working group meeting in Horsham

Design Engineer – Joel Turner

- Set out work done at Stewart/Walter/Gibson Street Rupanyup
- All road set outs complete
- All road walk throughs complete
- Boring under Stewart Street in progress by Halls Gap Plumbing
- Footpath contract work has begun in Hopetoun on Strachan Street
- Kerbing to commence in Cromie Street, Murtoa on 15 March 2016

OH&S Officer – Prepared by Bob Taylor

- Working on policies and procedures for outdoor staff
- Currently updating First Aid Kits
- Updating Traffic Management Plans

Technical Officer – Tony Brennan

- Appointed Kevin Connor to Caretaker position at Murtoa Caravan Park
- Approved as required, Consent Requests for the National Heavy Vehicle Regulator
- Served 2 x Notices to Vacate at Warracknabeal Caravan Park
- Updated Road Reserve Work Permits/Asset Protection Permit ledger as required
- Processed 'Dial Before You Dig' enquiries for any of the above permits that maybe required
- Met with Cec Hopper & Sons Project Manager Gary De Wit regarding the connection of Council buildings to the new sewer system in Rupanyup

Warracknabeal Regional Livestock Exchange

- Processed incident forms as required for two minor incidents at 2 March sale
- Updated contact and connection details for the Avdata system at the truckwash
- Sale held 17 February - 5,904 head
- Sale held 2 March - 5,284 head

Caravan Park Occupancy February 2016

State	Warracknabeal	Hopetoun	Murtoa
VIC	40	48	96
NSW	2	0	0
WA	0	0	0
QLD	3	2	27
SA	3	2	1
NT	0	0	0
ACT	0	0	0
TAS	0	0	2
International	0	0	1
Permanents	(29 x 10) = 290	(29 x 0) = 0	(21 x 3) = 63 (6 x 4) = 24
Monthly Occupancy	338	52	214

Technical Officer – Prepared by Nathan McLean

- Organised traffic counter installation and locations, download data and save report for future works
- Followed up with project managers regarding progress on their Local Government Infrastructure Projects
- Hopetoun Lane 12 closure proposal to Council forum
- Completed traffic management plans and communicated with contractors for installation of bus stop and tactiles in Marma street, Murtoa
- Setup a playground checklist folder to be conducted by town maintenance staff throughout the Shire
- Met with Jack Masi from AWMA Water Management Solutions to discuss proposed sites for backflow prevention floodgates on the Yarriambiack Creek
- Met with Brad Sward from Porter Plant to discuss what they can offer us for leasing vehicles in our fleet
- Completed funding application for the “Bridges Renewal Programme” for the Banyena Pimpinio road upgrade of the major culverts over the Dunmunkle creek
- Working on “Stronger Communities Programme” grant for the ambulance transfer station upgrade at the Warracknabeal airport

10.8 Community Projects Report – Prepared by Dennis Smith

Country Football and Netball Program 2013/2014 and Putting Locals First Program

The Hopetoun Community Centre project is well underway with the internal toilets/showers removed new shower bases poured and the extension flooring, framework and roofing completed.

Country Football and Netball Program 2014/2015

The internal walls have been stripped and 'old' showers and toilets removed for the Minyip Football and Netball Facilities Upgrade project. Electrical and plumbing roughing in work has been completed and the disabled access ramps poured.

The netball court surrounds have been prepared in the non-compliant run-off areas in readiness for re-sheeting. Asphaltting is scheduled for late March/early April together with line marking and on completion the netball rings will be adjusted to the correct height.

Country Football and Netball Program 2015/2016

An application for funding to construct a new netball/female change room, incorporating showers, toilets and washbasins at Anzac Park has been submitted requesting a grant of \$100,000 for a total project cost of \$153,970.

Community Facility Funding Program 2015/2016 – Planning

The final draft of the new Sport and Recreation Strategy has been completed – please refer to Reports for Decision.

Local Facilities for Local Clubs Program

The construction of the cricket practice wickets at the Minyip Recreation Reserve is now complete. Appropriate acknowledgement signage will be arranged when a reply from Minister Eren regarding a possible official opening is received.

Community Sports Infrastructure Fund 2016/2017 – Cricket Facilities

An application has been submitted under this program for an additional non-potable water irrigation supply for Anzac Park – which is the construction of a 5ML dam in the south east corner at the Wheatlands Museum site, with pumping infrastructure to transfer the water to Anzac Park. The application requests a grant of \$54,100 for a total project cost of \$81,176.

Community Sports Infrastructure Fund 2016/2017 – Minor Facilities

A combined application for improved lighting at the Brim Memorial Bowling Club and new in-ground, fully automated, sprinkler system for the Brim Recreation Reserve has been submitted under this program. The application requests a grant of \$85,200 for a total project cost of \$127,813.

Regional Jobs and Infrastructure Fund

Two projects have been approved under this program.

The first project is the construction of 5 walking tracks across the Shire with a grant of \$112,200 for a total project cost of \$146,200. The tracks are located in Murtoa; 2 in Minyip, Woomelang and Yaapeet. Rabi Park (Murtoa) is complete, the 2 tracks in Minyip should be completed before the end of March and timing for Woomelang and Yaapeet is yet to be determined.

The second project is streetscape works in Brim and Minyip with a grant of \$130,500 for a total project cost of \$174,000. Preliminary meetings with both the Brim Active Community Group and Minyip Progress Association have been held.

Community Shade Grants Program

An application (on behalf of the Redda's Park Trustees) for a shade structure over the playground at Redda's Park, Brim, was submitted and has been successful in gaining funding of \$16,300 for a total project cost of \$19,000.

Restoring Community War Memorials and Avenues of Honour Program

The Anzac Park Memorial Gates restoration project is now complete and acquittal documentation will be prepared.

Other Work Undertaken

I have assisted the Brim Lions Club to develop, and submit, an application under the Better Fishing Fund to install a pontoon at the Brim Weir Pool.

Assisting the Warracknabeal Men's Shed with several grant applications for funding to extend the size of their current premises.

11 REPORTS FOR DECISION

11.1 Finance Report – Prepared by Anita McFarlane

Recommendation

The Finance Report as at February 2016 be received.

11.2 Revenue Report – Prepared by Chantelle Pitt

Recommendation

The Revenue Report as at March 2016 be received.

11.3 Request for the Closure of Hopetoun Lane 12 – Prepared by Nathan McLean

On Wednesday, 10 February Council moved that due process of the Geographic Name Guidelines be followed and advertised to the public that consideration be given to close Hopetoun Lane 12. This has been identified as a privately owned road on a Certificate of Title.

Council advertised in all relevant local papers and invited comments or objections from any interested parties as per the Geographic Name Guidelines. There were two comments received with no objections.

Recommendation

That Council adopt the road closure of Hopetoun Lane 12 and remove from the Yarriambiack Shire Council Road Register.

11.4 Gravel Sources for Re-sheeting of Gravel Roads – Prepared by James Magee

The following plan of Yarriambiack Shire shows the current sources of gravel utilised for gravel road re-sheeting. The Assets Engineer who formulates the capital programs each year will utilise this plan when nominating a gravel pit for each separate job.

The plan has been formulated to maximise quality of gravel across as greater area as possible until the length of the cartage lead makes it economically unviable to transport that material any further.

Council of course have the discretion to nominate a specific material outside this policy and can do so at a Forum meeting or a Council meeting.

This policy does not apply to sealed road construction or gravel shoulders of sealed roads as generally the closest source of gravel is utilised to keep costs to a minimum.

Recommendation

That Council endorse the attached plan for formulation of the Gravel Re-sheet Program.

**11.5 Councillor Caretaker Procedure Policy Review – Prepared by Ray
Campbell**

The purpose of the Councillor Caretaker Procedure Policy is to ensure that ordinary business of Local Government in the Yarriambiack Shire Council continues throughout an election period in a responsible and transparent manner and in accordance with statutory requirements and established “caretaker” conventions.

These procedures commit Council during the caretaker period to:

1. Avoid making significant new policies or major decisions that could unreasonably bind a future Council; and
2. Ensure that public resources, including staff resources, are not used in election campaigning or in a way that may improperly influence the result of an election, or improperly advantage existing councillors as candidates in the election.

Recommendation

That the Councillor Caretaker Procedure Policy (as tabled) be adopted and be reviewed again in two years time.

11.6 Sport & Recreation Strategy 2016-2025 – Prepared by Dennis Smith

Wendy Holland, from communityvibe, has completed the final draft of our Sport & Recreation Strategy 2016-2025, and presented the draft Strategy to the 9 March Council Forum. Following from this it is proposed to release the document for community comment and feedback for a period of four weeks.

Recommendation

That the draft Sport & Recreation Strategy 2016-2025 be released for community comment and feedback for a period of four weeks

11.7 Council Rate Variation – Prepared by Ray Campling

As Councillors would be aware and appreciate in January 2015, the Essential Services Commission (ESC) received a terms of reference from the Minister for Finance, in consultation with the Minister for Local Government, to conduct a review and report on Local Government rates capping and variation framework.

Following this review and various associated reports the Minister for Local Government will set the rate cap each year that will specify the maximum increase in Council's rates for the forthcoming financial year. The Minister has the capacity to set a cap that applies to all Victorian Councils, a group of Councils or a single Council. The rate set by the Minister for Local Government is 2.5% for all Councils in 2016/2017.

In circumstances where the rate cap is deemed insufficient for a specific Councils needs, Council can apply to the Essential Services Commission for a higher cap. All Victorian Councils were provided with a timeframe of January 29th, 2016 to inform the Essential Services Commission if they intended to apply for a rate increase higher than the rate cap of 2.5% set by the Minister for Local Government, Natalie Hutchins under the Fair Go Rate System.

In submitting their notifications, Councils were not required to specify the rate increase that they would be seeking. Councils proceeding with an application for a rate increase in excess of the rate cap of 2.5% have until March 31st, 2016 to submit their submissions to the Essential Services Commission.

Yarriambiack Shire Council was one of the 21 Councils that submitted an intention to apply for a higher rate cap. The basis of Councils submission was that it provided Council with an additional period of time during it's draft budget deliberation period to further subjectively and critically fully examine it's draft budget, review it's operations, procedures and practices. The intention was to safeguard and assess the communities' realistic needs, requirements and expectations and to ascertain if there was an obvious project requiring to be undertaken that couldn't be absorbed within a 2.5% rate increase. Council's very much 'dislike' having to continually increase rates to meet and address community needs and expectation, as it is simply unfair particularly on the farming sector that contributes a significant proportion of the overall annual rate income.

In saying that Councils 'dislike' continually increasing rates, I have no doubt and I am constantly informed that rate payers 'dislike' paying the ever increasing rate rises; but unfortunately as I have regularly mentioned and discussed over a period of more than 10 years the Australian Local Government sector only receives 3% of the Australian Taxation income while the State Government receive 16% and the Federal Government receives 81%! During the 1970's Local Government received 6% of the Australian Taxation Dollar!

As a consequence of Council proactively examining and scrutinizing it's operations, procedures and practices in particular since the Minister for Local Government announced that rate increases for the 2016/2017 financial year will be capped at 2.5%, it has been identified and it is proposed not to proceed with an application to the Essential Services Commission to seek a rate variation above the identified 2.5% rate increase for the 2016/2017 financial year.

Rate Capping in addition to the Federal Government's freeze on Financial Assistance Grants over the past few years combined with Government cost and responsibility shifting has certainly placed a significant burden on Local Government Authorities throughout Australia, particularly on rural and remote councils that rely basically totally on general rates and grants to provide services to rate payers, residents and visitors. In recent times Councils have been innovative and creative examining internal structures, shared services and collaborative procurement processes – endeavouring to do more or the same for less approach.

By not applying for an increase to the identified 2.5% rate increase for 2016/2017 will be a short term burden relief for rate payers, the compounding effect of simply applying a Consumers Price Index (CPI) increase to Council general rates will have a significant and detrimental impact on particularly rural councils ability to fund service delivery and infrastructure renewal works, as a CPI increase is quite irrelevant to the costs of providing and delivering these particular community requirements. Unfortunately, as previously mentioned small rural Council's are very much dependent on general rates and government grant funding to provide services and facilities to rate payers, residents and visitors as there is very limited opportunity and potential to generate alternative and additional forms of income.

As Council have stated repeatedly over a long period of time – simply and disproportionately increasing rates to service our community's needs and expectations is definitely not a fair or appropriate solution! Local Government throughout Australia and in particular the small and remote municipalities must receive a fairer and more equitable distribution of the Australian Taxation Dollar.

Recommendation

- (1) That Council advise the Essential Services Commission that it will not be proceeding with an application to seek a rate variation above the identified rate increase of 2.5% for the 2016/2017 financial year
- (2) That Council continue to pursue a fairer and more equitable distribution of the Australian Taxation Dollar for the Australian Local Government sector, especially rural and remote Councils

11.8 Murtoa South Drainage – Prepared by James Magee

The attached report details a request from three land owners in the Murtoa South area for assistance with drainage works through private property. As detailed within the letter:

“In very wet years, water flows from the Lubeck region north along the Murtoa - Glenorchy Road to about 3km south of Murtoa and then heads west eventually ending up in the Yarriambiack Creek about 4km south of the Wimmera Highway.

Water from Murtoa flows south, joining up with the Lubeck region water and also heads west. (There is also water that flows from the Wimmera River through the Barrabool Forest that ends up in this same area). Before the water can get to the Yarriambiack Creek, it pools up covering hundreds of hectares of good farming land.”

Since 2011 discussion between Council and the landowners has been ongoing with both parties seeing merit in improving drainage in the area. At around that time Council requested a quote for the proposed earthworks to be obtained from a private contractor, so Council could look at the possibility of seeking external funding. During subsequent years the quote was not forthcoming however, Council did facilitate an application for funding through Landcare in 2013 based on estimated costs for an amount of \$16,280. The application was unsuccessful. Within the application, Council nominated it would provide works on five crossing upgrades with an in-kind contribution of \$15,000.

Council has now received the quotation for works as explained in the letter from the landholders:

“We have obtained a quote from John Glover to construct a spoon drain for \$10,150 plus GST. The drain would be approximately 2,900m long with an average cut of 0.5m by 4.5m wide. Our understanding of conversations with James Magee is that the Shire would make \$5,000 available towards this spoon drain cost with the remaining costs been shared equally between the Roscrae Delahunty’s and the Templemore Delahunty’s. On top of our cash costs, the Templemore and Roscrae farms will need to land level at least 6,500mtrs of dirt so that our paddocks are appropriately prepared for the spoon drain and cropping activities to work efficiently. This “in kind” contribution is likely to be around \$6,000 to \$7,000”.

To maximise the flow of water in this area, a total of five culvert/floodways need to be constructed at an approximate cost of \$33,600. This would be at full cost to Council and is a significant portion of the scheme.

As stated above, during discussions between the parties, there has been an understanding that Council would contribute \$5,000 toward the project without the funds being targeted, although it was perceived that the money may be provided towards surveys or other engineering works that may be required.

On behalf of the landholders, I have made recent enquiries regarding permits and found that Planning and Catchment Management Authority approval is required.

Cost Summary of Project

Earthworks (by contractor)	\$10,150
Earthworks (by landowners)	\$,7,000
Culvert/floodway (Council)	\$33,600
Total Project Cost	\$50,750

Recommendation

That Council proceed to construct the culvert/floodway arrangements at five locations as requested.

Recommendation

That Council do not contribute to the earthworks on private property.

Recommendation

That Council contribute up to an 'in kind' amount of \$5,000 for any survey work that is required.

7/3/16

The Mayor, Mr Ray Kingston and councillors,

Yarriambiack Shire Council

Warracknabeal, 3388

Dear Ray

Thanks for the time you and the Yarriambiack staff gave Roger Webb, Bernie Delahunty and I in getting to understand the water issues south west of Murtoa on 11 February. Hopefully we have an understanding of what needs to be done in alleviating the water that ends up in that area in the event of an extremely wet period.

In very wet years, water flows from the Lubeck region north along the Murtoa - Glenorchy Road to about 3 km south of Murtoa and then heads west eventually ending up in the Yarriambiack Creek about 4 km south of the Wimmera Highway.

Water from Murtoa flows south, joining up with the Lubeck region water and also heads west. (There is also water that flows from the Wimmera River through the Barrabool Forest that ends up in this same area). Before the water can get to the Yarriambiack Creek, it pools up covering hundreds of hectares good farming land. This pooling is caused by some higher ground south of the Erinsvale Homestead.

For some years now there has been a conversation between James Magee from the Yarriambiack Shire and local landholders about alleviating the problems caused from this pooled water. It has been suggested and agreed that a spoon drain be constructed from the middle of the paddock owned by Bernie Delahunty from Roscrea through various paddocks owned by the Templemore Delahunty's to a water course that runs into the Yarriambiack Creek.

We have obtained a quote from John Glover to construct a spoon drain for \$10,150 plus GST. The drain would be approximately 2,900 m long with an average cut of 0.5 m by 4.5 m wide. Our understanding of conversations with James Magee is that the Shire would make \$5,000 available towards this spoon drain cost with the remaining costs been shared equally between the Roscrea Delahunty's and the Templemore Delahunty's. On top of our cash costs, the Templemore and Roscrea farms will need to land level at least 6,500 mtr of dirt so that our paddocks are appropriately prepared for the spoon drain and cropping activities to work efficiently. This "in kind" contribution is likely to be around \$6,000 to \$7,000.

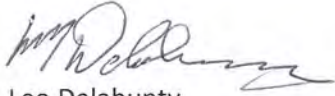
There will also need to be causeways constructed on Delahunty's Road and Gavan's Road as well as some work (probably a causeway) on Flume Road to allow for the free flow of water. It is also believed that considerable benefit would be gained if there were causeways constructed on each of Webb's Dry Weather Road and Bates Road.

We believe that with the topographical maps available, our tractor GPS elevations, the Google Earth elevations along with our own experiences and John Glover's laser equipment that we do not need to survey the area in question to get the right result. I have attached the John Glover quote, a copy of land use elevations and a Google Earth map that indicates the proposed spoon drain in yellow and

the associated causeways with an orange line. The other two causeways not directly associated with the spoon drain are marked with an orange cross.

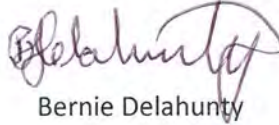
We are keen to get the spoon drain constructed during March as all paddocks in question are ideally suited to the construction of an efficient drain. Can the Shire please confirm that this proposal is in line with the Shire's thinking?

Regards



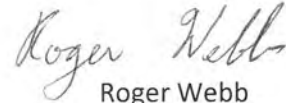
Leo Delahunty

Templemore Partners



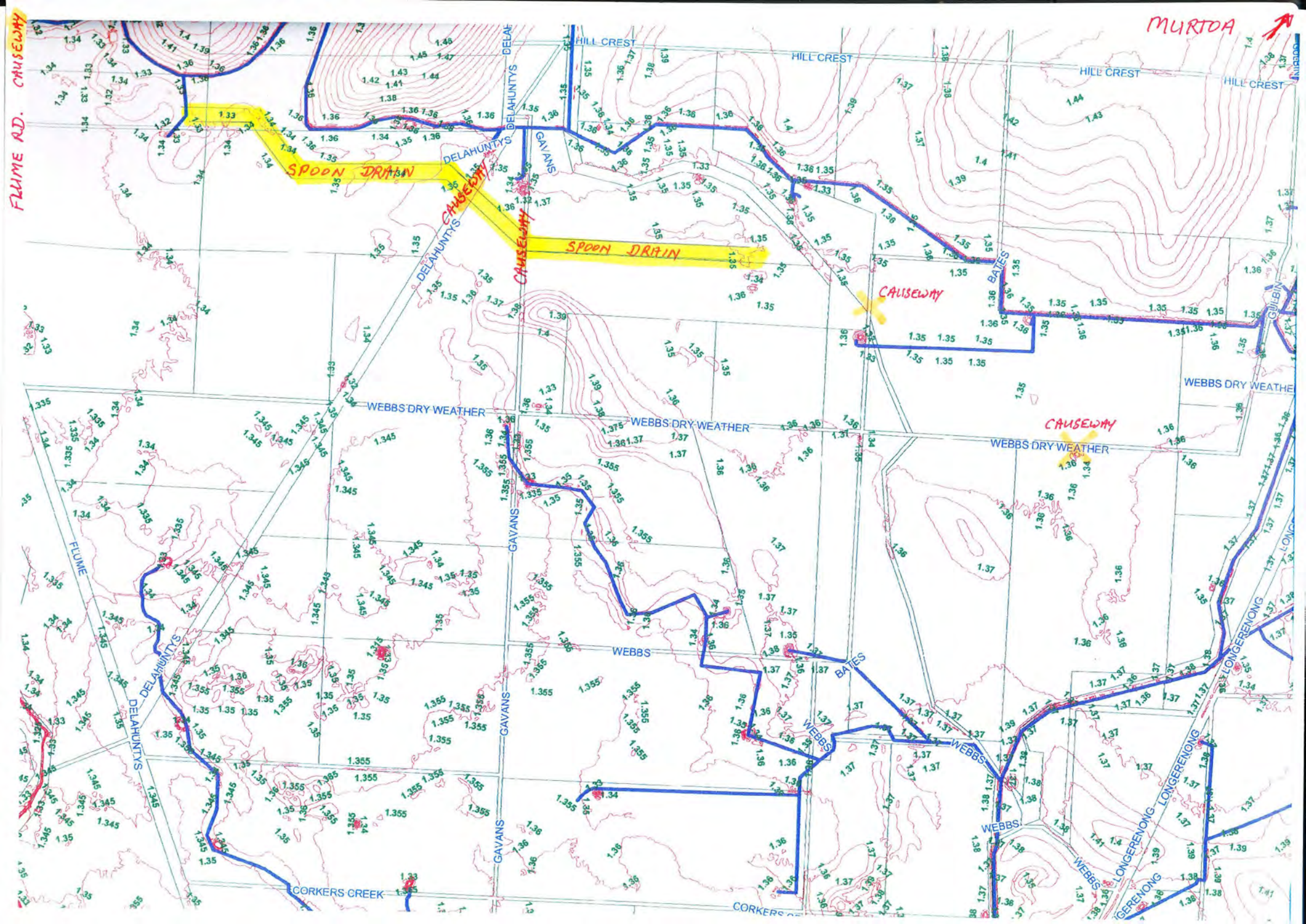
Bernie Delahunty

Roscrac



Roger Webb

Murtoa



12 GENERAL BUSINESS (including strategic direction and specific issues)

13 CLOSED SESSION

14 MINUTES FROM MEETINGS

15 ATTACHMENTS / REPORTS

Planning Permit Activity Report for February 2016
Rates Report – March 2016
Income Statement by Resources for February 2016
Income Statement by Department for February 2016
Capital Expenditure for February 2016
Balance Sheet as at 29 February 2016

16 NEXT MEETING

The next meeting of Council will be held on Wednesday, 27 April 2016 at 9:30am at Warracknabeal.

17 CLOSE

Mayor

ADDENDUM TO AGENDA**11.9 Road Reserve Works Permit – 2016 Reinstatement Fees & Asset Protection Permit Fee – Prepared by Michael Evans & Tony Brennan****1. Road Reserve Works Permit - Reinstatement Fees**

The Technical Services Department has developed the Road Reserve Works Permit reinstatement fees for 2016 as shown below. These fees cover any additional costs due to any works that need to be carried out by Council after a contractor has completed all works specified on the issued permit. Some examples of these works could include; resealing of road pavement, replacement of footpath sections, adding loam on trenches that have sunk etc. The fees also cover any extra Council works that need to be carried out as a result of other utility emergency works e.g. Powercor, Telstra, GWMWater etc.

2016 Table of Fees:-

Works – Kerb & Channel	Non Statutory	Minimum charge \$400.00	\$240.00/m ²	GST exclusive
Works – Concrete	Non Statutory	Minimum charge \$400.00	\$150.00/m ²	GST exclusive
Road Surface – Bituminous / Asphalt	Non Statutory	Minimum charge \$400.00	\$180.00/m ²	GST exclusive
Works – Vehicle Crossing	Non Statutory	Minimum charge \$400.00	\$150.00/m ²	GST exclusive
Works – Earth Nature Strip Surface	Non Statutory	Minimum charge \$400.00	\$150.00/m ²	GST exclusive

The Road Reserve Works Permit which was previously called “Road Opening Permit” was adopted at Council’s Meeting held 10th May 2005. It became operative from 1 July 2005. The requirement for this permit is also reinforced in the Road Management Plan.

2. Asset Protection Permit Fee

The Technical Services Department recommends the implementation of a fee of \$30.00 dollars for the Asset Protection Permit. This fee would assist with the administrative costs for the permit to be processed and also any inspections required to be carried out by a Council Officer. Yarriambiack Shire Council only commenced enforcing the Asset Protection Permit system from 1 November 2014 in accordance with the 2004 Road Management Act – a fee for this permit was unable to be implemented until the adoption Council’s General Local Law No. 5 by Council on 23 September 2015.

Recommendation

1. The Yarriambiack Shire Council adopts the Road Reserve Works Permit – 2016 Reinstatement Fees as detailed above; and
2. The Yarriambiack Shire Council adopts the Asset Protection Permit system including the Fee of \$30.

YARRIAMBIACK SHIRE COUNCIL

INCOME STATEMENT BY RESOURCES FOR FEBRUARY 2016

	2014/2015 Budget	2014/2015 Actuals	February Actuals	2015/2016 Budget	YTD Actuals	Forecast	YTD Variance	YTD % Variance
Income								
Asset Disposal & Fair Value Adjustments	\$ (400,000)	\$ (375,190)	\$ (83,233)	\$ (297,800)	\$ (176,431)	\$ (312,800)	\$ (121,369)	41%
Contributions, Donations & Reimbursement	\$ (309,839)	\$ (264,320)	\$ (17,945)	\$ (235,911)	\$ (117,690)	\$ (250,063)	\$ (118,221)	50%
Government Grants & Charges	\$ (9,225,566)	\$ (11,155,366)	\$ (1,943,689)	\$ (8,870,887)	\$ (6,134,985)	\$ (7,428,577)	\$ (2,735,902)	31%
Interest Income	\$ (139,921)	\$ (138,836)	\$ (3,142)	\$ (107,021)	\$ (15,913)	\$ (77,021)	\$ (91,108)	85%
Rates & Charges	\$ (10,594,460)	\$ (10,827,963)	\$ 3,613	\$ (11,314,254)	\$ (12,091,227)	\$ (11,323,417)	\$ 776,973	(7%)
Sale Proceeds - Contra Sales	\$ -	\$ -	\$ -	\$ -	\$ (173)	\$ (173)	\$ 173	0%
User Charges, Fees & Fines	\$ (1,051,752)	\$ (1,163,322)	\$ (48,811)	\$ (1,028,072)	\$ (600,482)	\$ (1,143,482)	\$ (427,590)	42%
Income Total	\$ (21,721,538)	\$ (23,924,996)	\$ (2,093,207)	\$ (21,853,945)	\$ (19,136,901)	\$ (20,535,533)	\$ (2,717,044)	12%
Expenditure								
Asset Disposal & Fair Value Adjustments	\$ 300,412	\$ 944,791	\$ -	\$ 309,424	\$ -	\$ 309,424	\$ 309,424	100%
Bad & Doubtful Debts	\$ -	\$ 36,998	\$ -	\$ -	\$ -	\$ -	\$ -	0%
Contributions & Donations	\$ 892,342	\$ 851,753	\$ 11,810	\$ 977,245	\$ 694,239	\$ 973,245	\$ 283,006	29%
Depreciation Amortisation & Impairment	\$ 6,251,313	\$ 6,568,314	\$ -	\$ 6,438,426	\$ -	\$ 6,438,426	\$ 6,438,426	100%
Employee Costs	\$ 7,637,865	\$ 7,403,109	\$ 526,299	\$ 7,770,428	\$ 5,024,207	\$ 7,480,067	\$ 2,746,221	35%
Finance Costs	\$ 72,866	\$ 108,979	\$ 4,698	\$ 123,396	\$ 46,670	\$ 123,396	\$ 76,726	62%
Materials	\$ 5,215,260	\$ 4,955,062	\$ 89,075	\$ 4,633,460	\$ 2,818,407	\$ 4,522,706	\$ 1,815,053	39%
Other Expenses	\$ 1,357,868	\$ 1,333,339	\$ 48,534	\$ 1,299,629	\$ 940,297	\$ 1,322,261	\$ 359,332	28%
Expenditure Total	\$ 21,727,926	\$ 22,202,345	\$ 680,416	\$ 21,552,008	\$ 9,523,819	\$ 21,169,525	\$ 12,028,189	56%
Total	\$ 6,388	\$ (1,722,651)	\$ (1,412,791)	\$ (301,937)	\$ (9,613,082)	\$ 633,992	\$ 9,311,145	

YARRIAMBIACK SHIRE COUNCIL

INCOME STATEMENT BY DEPARTMENT FOR FEBRUARY 2016

	2014/2015 Budget	2014/2015 Actuals	February Actuals	2015/2016 Budget	YTD Actuals	Forecast	YTD Variance	YTD % Variance
Income								
Community Services	\$ (1,974,579)	\$ (2,215,881)	\$ (167,286)	\$ (1,863,121)	\$ (1,380,340)	\$ (2,063,649)	\$ (482,781)	26%
Corporate Services	\$ (14,552,348)	\$ (17,406,375)	\$ (608,535)	\$ (15,348,378)	\$ (12,964,507)	\$ (12,564,711)	\$ (2,383,871)	16%
Economic Development	\$ (988,531)	\$ (1,047,968)	\$ (105,415)	\$ (268,264)	\$ (265,074)	\$ (370,639)	\$ (3,190)	1%
Engineering	\$ (2,725,221)	\$ (1,476,163)	\$ (1,031,385)	\$ (2,749,800)	\$ (3,019,827)	\$ (3,788,375)	\$ 270,027	(10%)
Recreation & Culture & Leisure	\$ (264,361)	\$ (486,460)	\$ (151,158)	\$ (360,970)	\$ (287,281)	\$ (401,235)	\$ (73,689)	20%
Regulatory Services	\$ (157,739)	\$ (160,509)	\$ (24,263)	\$ (147,663)	\$ (146,843)	\$ (220,396)	\$ (820)	1%
Waste & Environment	\$ (1,058,759)	\$ (1,131,638)	\$ (5,165)	\$ (1,115,749)	\$ (1,073,028)	\$ (1,126,528)	\$ (42,721)	4%
Income Total	\$ (21,721,538)	\$ (23,924,996)	\$ (2,093,207)	\$ (21,853,945)	\$ (19,136,901)	\$ (20,535,533)	\$ (2,717,044)	12%
Expenditure								
Community Services	\$ 2,750,681	\$ 2,653,577	\$ 176,227	\$ 2,784,790	\$ 1,643,481	\$ 2,788,563	\$ 1,141,309	41%
Corporate Services	\$ 1,928,109	\$ 1,652,233	\$ 45,255	\$ 1,971,414	\$ 1,030,472	\$ 1,752,709	\$ 940,942	48%
Economic Development	\$ 1,020,560	\$ 1,248,749	\$ 31,052	\$ 772,285	\$ 492,319	\$ 771,819	\$ 279,966	36%
Engineering	\$ 11,069,421	\$ 11,838,719	\$ 151,650	\$ 10,954,703	\$ 3,216,651	\$ 10,828,118	\$ 7,738,052	71%
Governance	\$ 1,012,911	\$ 865,027	\$ 50,021	\$ 1,080,027	\$ 678,053	\$ 1,075,691	\$ 401,974	37%
Recreation & Culture & Leisure	\$ 1,377,604	\$ 1,292,057	\$ 10,961	\$ 1,344,019	\$ 771,017	\$ 1,323,826	\$ 573,002	43%
Regulatory Services	\$ 663,416	\$ 663,719	\$ 36,877	\$ 662,004	\$ 397,760	\$ 640,986	\$ 264,244	40%
Waste & Environment	\$ 1,905,224	\$ 1,988,264	\$ 178,372	\$ 1,982,766	\$ 1,294,065	\$ 1,987,813	\$ 688,701	35%
Expenditure Total	\$ 21,727,926	\$ 22,202,345	\$ 680,416	\$ 21,552,008	\$ 9,523,819	\$ 21,169,525	\$ 12,028,189	56%
Total	\$ 6,388	\$ (1,722,651)	\$ (1,412,791)	\$ (301,937)	\$ (9,613,082)	\$ 633,992	\$ 9,311,145	

YARRIAMBIA SHIRE COUNCIL
CAPITAL EXPENDITURE FOR FEBRUARY 2016

	2014/2015 Budget	2014/2015 Actuals	February Actuals	2015/2016 Budget	YTD Actuals	Forecast	YTD Variance	YTD % Variance
01929 - Administration - Capital								
0900 - Building Capital Works	\$ 5,000	\$ 17,910	0	30,000	28,021	30,000	1,979	7%
0910 - Furniture & Equipment Capital Works	\$ 2,000	\$ -	0	2,060	0	2,060	2,060	100%
01939 - Asset Management - Capital								
0920 - Computer / IT Capital Works	\$ -	\$ 6,528	0	39,500	37,065	39,500	2,435	6%
01949 - Information Technology - Capital								
0920 - Computer / IT Capital Works	\$ 20,000	\$ 6,258	\$ -	\$ 20,000	\$ -	\$ 20,000	\$ 20,000	100%
02919 - HACC Administration - Capital								
0910 - Furniture & Equipment Capital Works	\$ -	\$ 2,800	\$ -	\$ -	\$ 3,436	\$ -	\$ (3,436)	0%
0920 - Computer / IT Capital Works	\$ -	\$ -	\$ -	\$ -	\$ -	\$ -	\$ -	0%
02929 - MECC - Capital								
0910 - Furniture & Equipment Capital Works	\$ 2,228	\$ -	\$ -	\$ 2,000	\$ -	\$ 2,000	\$ 2,000	100%
02939 - Senior Citizens - Capital								
0900 - Building Capital Works	\$ 80,000	\$ 288	23,945	95,000	63,066	95,000	31,934	34%
02949 - Environmental Health - Capital								
0910 - Furniture & Equipment Capital Works			0	0	2,966	0	-2,966	0%
02959 - Animal Pound - Capital								
0930 - Animal Pound - Capital Works	\$ -	\$ -	\$ -	\$ -	\$ 14	\$ -	\$ (14)	0%
02969 - Maternal & Child Health - Capital								
0900 - Building Capital Works	\$ 20,000	\$ 70,732	0	6,556	4,501	11,058	2,055	31%
0920 - Computer / IT Capital Works	\$ 2,500	\$ -	0	6,500	0	0	6,500	100%
02979 - Fire Hydrants - Capital								
0965 - Fire Hydrants - Capital	\$ -	\$ -	\$ -	\$ 4,000	\$ -	\$ 4,000	\$ 4,000	100%
02989 - Preschools - Capital								
0900 - Building Capital Works	\$ 43,000	\$ 487	7,120	5,000	7,120	5,000	-2,120	(42%)
03909 - Industrial Estate - Capital								
0905 - Industrial Estate Capital Works	\$ 35,000	\$ -	1,055	15,000	10,370	13,000	4,630	31%
03919 - Caravan Parks - Capital								
0900 - Building Capital Works	\$ 76,000	\$ 57,525	0	10,000	31,451	35,000	-21,451	(215%)
0910 - Furniture & Equipment Capital Works	\$ 2,000	\$ -	0	2,000	0	2,000	2,000	100%
03929 - Public Amenities - Capital								
0900 - Building Capital Works	\$ 5,000	\$ -	18,182	70,000	57,620	70,000	12,380	18%
04939 - Hall - Capital								
0900 - Building Capital Works	\$ 48,000	\$ 48,459	\$ -	\$ 50,000	\$ 2,588	\$ 50,000	\$ 47,412	95%
05909 - Parks & Playgrounds - Capital								
0975 - Playground Capital Works	\$ 21,630	\$ 105,386	\$ -	\$ 10,000	\$ 137,409	\$ 10,000	\$ (127,409)	(1274%)
05919 - Recreation Reserve - Capital								
0900 - Building Capital Works	\$ -	\$ -	\$ -	\$ 348,000	80,636	\$ 348,000	\$ 267,364	77%
05939 - Swimming Pool - Capital								
0900 - Building Capital Works	\$ 20,000	\$ -	\$ -	\$ 20,000	\$ -	\$ 10,000	\$ 20,000	100%
05949 - Sporting Complex - Capital								
0900 - Building Capital Works	\$ 5,000	\$ 37,330	\$ -	\$ 5,000	\$ -	\$ 5,000	\$ 5,000	100%
0910 - Furniture & Equipment Capital Works	\$ 4,000	\$ -	\$ -	\$ 4,000	\$ -	\$ 4,000	\$ 4,000	100%
05959 - Gymnasium - Capital								
0910 - Furniture & Equipment Capital Works	\$ 4,000	\$ -	\$ -	\$ -	\$ -	\$ -	\$ -	0%
06909 - Local Roads - Capital								
0935 - Urban Road Construction	\$ 186,000	\$ 255,868	14,380	191,120	119,113	191,120	72,007	38%
0940 - Rural Road Construction	\$ 2,363,544	\$ 2,605,985	92,757	2,325,481	1,491,631	2,325,481	833,850	36%
0945 - Reseals	\$ 229,911	\$ 231,432	0	336,912	133,231	336,912	203,681	60%
0950 - Resheets	\$ 1,178,760	\$ 1,465,280	11,193	1,135,608	957,896	1,135,608	177,712	16%
0955 - Shoulder Resheets	\$ 378,721	\$ 489,651	173,232	376,840	473,815	376,840	-96,975	(26%)
06919 - Footpath - Capital								
0980 - Footpath Construction	\$ 201,337	\$ 136,014	\$ -	\$ 211,992	\$ 24,400	\$ 211,992	\$ 187,592	88%
06929 - Bridge - Capital								
0990 - Bridge Construction	\$ 32,726	\$ -	\$ -	\$ 33,764	\$ -	\$ 33,764	\$ 33,764	100%
06939 - Kerb & Channel - Capital								
0985 - Kerb & Channel Construction	\$ 300,000	\$ 278,972	\$ -	\$ 311,410	\$ 240,501	\$ 311,410	\$ 70,909	23%
06959 - Aerodrome - Capital								
0900 - Building Capital Works	\$ -	\$ 22,542	0	0	90,744	0	-90,744	0%
0950 - Resheets	\$ 150,000	\$ 37,980	0	530,458	6,250	530,458	524,208	99%
06979 - Depot - Capital								
0900 - Building Capital Works	\$ 250,000	\$ 275,601	12,455	108,000	309,552	300,000	-201,552	(187%)
07909 - Drainage - Capital								
0995 - Drainage Construction	\$ 33,297	\$ 50,478	\$ -	\$ 35,000	\$ -	\$ 35,000	\$ 35,000	100%
07929 - Transfer Stations & Landfills - Capital								
0960 - Waste Site Capital Works	\$ 20,000	\$ 6,285	\$ -	\$ 20,000	\$ 8,001	\$ 20,000	\$ 11,999	60%

YARRIAMBIACK SHIRE COUNCIL
CAPITAL EXPENDITURE FOR FEBRUARY 2016

	2014/2015 Budget	2014/2015 Actuals	February Actuals	2015/2016 Budget	YTD Actuals	Forecast	YTD Variance	YTD % Variance
08909 - Livestock Exchange - Capital								
0900 - Building Capital Works	\$ 10,300	\$ 29,717	\$ -	\$ 5,000	\$ -	\$ 5,000	\$ 5,000	100%
69760 - Staff Vehicle Purchases								
6800 - Plant Purchases	\$ 320,000	\$ 282,970	\$ -	\$ 320,000	\$ 242,790	\$ 320,000	\$ 77,210	24%
69860 - Works Plant Purchases								
6800 - Plant Purchases	\$ 740,000	\$ 825,708	\$ 4,620	\$ 900,000	\$ 160,229	\$ 900,000	\$ 739,771	82%
Total	\$ 6,789,954	\$ 7,348,186	\$ 358,938	\$ 7,586,201	\$ 4,724,418	\$ 7,789,203	\$ 2,861,783	38%

YARRIAMBIACK SHIRE COUNCIL
BALANCE SHEET
AS AT 29th FEBRUARY 2016

	2014/2015 Budget	2014/2015 Actuals	February Actuals	2015/2016 Budget	YTD Actuals	Forecast	YTD Variance	YTD % Variance
Current Assets								
Cash & Cash Equivalents Investments	\$ 2,992,000	\$ 4,322,000	\$ 8,501,029	\$ 1,429,000	\$ 7,096,662	\$ 1,429,000	\$ (5,667,662)	(397%)
Rate Debtors	\$ 900,000	\$ 1,185,000	\$ (7,924,030)	\$ 850,000	\$ 2,279,044	\$ 850,000	\$ (1,429,044)	(168%)
Debtors	\$ 511,000	\$ 407,000	\$ (134,437)	\$ 94,000	\$ 274,896	\$ 94,000	\$ (180,896)	(192%)
Other Current Accrued Assets	\$ 180,000	\$ 206,000	\$ 417	\$ 180,000	\$ 417	\$ 180,000	\$ 179,583	100%
Inventory On Hand	\$ 900,000	\$ 484,000	\$ 23,125	\$ 711,000	\$ 472,491	\$ 711,000	\$ 238,509	34%
Assets Held for Resale	\$ 84,000	\$ 31,000	\$ -	\$ 15,000	\$ 31,320	\$ 15,000	\$ (16,320)	(109%)
Current Assets Total	\$ 5,567,000	\$ 6,635,000	\$ 466,104	\$ 3,279,000	\$ 10,154,830	\$ 3,279,000	\$ (6,875,830)	
Non Current Assets								
Non Current Debtors	\$ -	\$ 1,000	\$ -	\$ -	\$ 609	\$ -	\$ (609)	0%
Investments	\$ 350,000	\$ 481,000	\$ -	\$ 357,000	\$ 480,752	\$ 357,000	\$ (123,752)	(35%)
Fixed Assets	\$ 149,645,000	\$ 154,054,000	\$ 358,938	\$ 159,177,000	\$ 158,780,204	\$ 159,177,000	\$ 396,796	0%
Non Current Assets Total	\$ 149,995,000	\$ 154,536,000	\$ 358,938	\$ 159,534,000	\$ 159,261,565	\$ 159,534,000	\$ 272,435	
TOTAL ASSETS	\$ 155,562,000	\$ 161,171,000	\$ 825,042	\$ 162,813,000	\$ 169,416,395	\$ 162,813,000	\$ (6,603,395)	
Current Liabilities								
Creditors	\$ (1,200,000)	\$ (2,070,000)	\$ 581,129	\$ (1,200,000)	\$ (659,533)	\$ (1,200,000)	\$ (540,467)	45%
Current Loans	\$ (151,000)	\$ (136,000)	\$ -	\$ (62,000)	\$ (135,973)	\$ (135,973)	\$ 73,973	(119%)
Short Term Provisions	\$ (2,619,000)	\$ (2,854,000)	\$ -	\$ (2,619,000)	\$ (2,828,416)	\$ (2,619,000)	\$ 209,416	(8%)
Trust & Deposits	\$ -	\$ (31,000)	\$ 1,985	\$ -	\$ (165,744)	\$ -	\$ 165,744	0%
Current Liabilities Total	\$ (3,970,000)	\$ (5,091,000)	\$ 583,114	\$ (3,881,000)	\$ (3,789,666)	\$ (3,954,973)	\$ (91,334)	
Non Current Liabilities								
Long Term Provisions	\$ (404,000)	\$ (519,000)	\$ -	\$ (404,000)	\$ (519,433)	\$ (404,000)	\$ 115,433	(29%)
Non Current Loans	\$ (199,000)	\$ (215,000)	\$ 4,635	\$ (229,000)	\$ (128,837)	\$ (229,000)	\$ (100,163)	44%
Non Current Liabilities Total	\$ (603,000)	\$ (734,000)	\$ 4,635	\$ (633,000)	\$ (648,270)	\$ (633,000)	\$ 15,270	
TOTAL LIABILITIES	\$ (4,573,000)	\$ (5,825,000)	\$ 587,749	\$ (4,514,000)	\$ (4,437,936)	\$ (4,587,973)	\$ (76,064)	
NET ASSETS	\$ (150,989,000)	\$ (155,346,000)	\$ (1,412,791)	\$ (158,299,000)	\$ (164,978,459)	\$ (158,225,027)	\$ 6,679,459	
Current Assets								
Accumulated Surplus/Deficit	\$ (64,189,000)	\$ (60,384,000)	\$ (1,412,791)	\$ (58,941,000)	\$ (65,292,485)	\$ (58,867,027)	\$ 6,351,485	(11%)
Asset Revaluation Reserve	\$ (86,800,000)	\$ (94,962,000)	\$ -	\$ (99,358,000)	\$ (99,685,975)	\$ (99,358,000)	\$ 327,975	(0%)
TOTAL EQUITY	\$ (150,989,000)	\$ (155,346,000)	\$ (1,412,791)	\$ (158,299,000)	\$ (164,978,459)	\$ (158,225,027)	\$ 6,679,459	

YARRIAMBIACK SHIRE COUNCIL

Investments

Bendigo Bank	\$ 325,769.81	2.60%	01/09/2016
Commonwealth Bank	\$ 129,070.64	2.35%	19/07/2016
AMP (oncall)	\$ 510.39		Oncall
	\$ 455,350.84		

Loans

		Term & Rate	Finish Date
National Australia Bank - Unfunded Superannuation	\$ 264,810	Fixed at 5.21%	30/06/2018
	\$ 264,810		

Rates Report - March 2016

Prepared by Chantelle Pitt

Rate Code	Ward Description	Total Income	Rebate Total	Receipts	Total
General Rates	Dunmunkle	\$ 3,163,401.21	\$ (47,654.15)	\$ (2,603,669.67)	\$ 512,077.39
	Hopetoun	\$ 3,438,534.86	\$ (37,189.56)	\$ (2,948,194.60)	\$ 453,150.70
	Warracknabeal	\$ 4,195,490.76	\$ (60,243.42)	\$ (3,473,392.81)	\$ 661,854.53
Total		\$ 10,797,426.83	\$ (145,087.13)	\$ (9,025,257.08)	\$ 1,627,082.62
120L Residential Garbage Service	Dunmunkle	\$ 143,461.96	\$ (9,220.46)	\$ (83,442.70)	\$ 50,798.80
	Hopetoun	\$ 119,577.84	\$ (7,091.04)	\$ (63,536.09)	\$ 48,950.71
	Warracknabeal	\$ 208,588.76	\$ (9,559.44)	\$ (128,701.13)	\$ 70,328.19
Total		\$ 471,628.56	\$ (25,870.94)	\$ (275,679.92)	\$ 170,077.70
120L Commercial Garbage Service	Dunmunkle	\$ 4,497.15	\$ -	\$ (3,909.53)	\$ 587.62
	Hopetoun	\$ 5,259.18	\$ -	\$ (4,152.28)	\$ 1,106.90
	Warracknabeal	\$ 4,555.27	\$ -	\$ (3,347.48)	\$ 1,207.79
Total		\$ 14,311.60	\$ -	\$ (11,409.29)	\$ 2,902.31
120L Rural Garbage Service	Dunmunkle	\$ 4,484.94	\$ (109.65)	\$ (3,940.66)	\$ 435.23
	Hopetoun	\$ 2,323.44	\$ -	\$ (1,834.68)	\$ 488.76
	Warracknabeal	\$ 6,066.81	\$ (55.81)	\$ (5,108.31)	\$ 902.69
Total		\$ 12,875.19	\$ (165.46)	\$ (10,883.05)	\$ 1,826.68
240L Residential Garbage Service	Dunmunkle	\$ 6,433.09	\$ (309.12)	\$ (4,729.83)	\$ 1,394.14
	Hopetoun	\$ 7,464.36	\$ (387.45)	\$ (4,076.27)	\$ 3,000.64
	Warracknabeal	\$ 23,496.66	\$ (604.36)	\$ (16,634.13)	\$ 6,258.17
Total		\$ 37,394.11	\$ (1,300.93)	\$ (25,440.23)	\$ 10,652.95
240L Commercial Garbage Service	Dunmunkle	\$ 42,545.99	\$ -	\$ (28,083.12)	\$ 14,462.87
	Hopetoun	\$ 32,735.97	\$ -	\$ (27,500.82)	\$ 5,235.15
	Warracknabeal	\$ 98,695.69	\$ -	\$ (84,096.52)	\$ 14,599.17
Total		\$ 173,977.65	\$ -	\$ (139,680.46)	\$ 34,297.19
240L Rural Garbage Service	Dunmunkle	\$ 10,199.52	\$ -	\$ (9,161.64)	\$ 1,037.88
	Hopetoun	\$ 9,474.81	\$ -	\$ (8,121.84)	\$ 1,352.97
	Warracknabeal	\$ 20,381.05	\$ -	\$ (18,295.64)	\$ 2,085.41
Total		\$ 40,055.38	\$ -	\$ (35,579.12)	\$ 4,476.26
80L Residential Garbage Service	Dunmunkle	\$ 31,092.76	\$ (2,108.42)	\$ (17,137.00)	\$ 11,847.34
	Hopetoun	\$ 32,396.09	\$ (2,468.47)	\$ (17,118.19)	\$ 12,809.43
	Warracknabeal	\$ 38,476.75	\$ (1,902.42)	\$ (23,741.07)	\$ 12,833.26
Total		\$ 101,965.60	\$ (6,479.31)	\$ (57,996.26)	\$ 37,490.03
80L Rural Garbage Service	Dunmunkle	\$ 1,118.56	\$ -	\$ (1,048.64)	\$ 69.92
	Hopetoun	\$ 838.92	\$ -	\$ (699.10)	\$ 139.82
	Warracknabeal	\$ 3,495.50	\$ (45.48)	\$ (3,205.32)	\$ 244.70
Total		\$ 5,452.98	\$ (45.48)	\$ (4,953.06)	\$ 454.44
Residential Kerbside Recycling	Dunmunkle	\$ 117,974.97	\$ (7,950.61)	\$ (70,784.62)	\$ 39,239.74
	Hopetoun	\$ 100,971.04	\$ (6,926.75)	\$ (60,000.22)	\$ 34,044.07
	Warracknabeal	\$ 173,076.65	\$ (8,074.49)	\$ (111,864.49)	\$ 53,137.67
Total		\$ 392,022.66	\$ (22,951.85)	\$ (242,649.33)	\$ 126,421.48
Commercial Kerbside Recycling	Dunmunkle	\$ 10,523.51	\$ -	\$ (7,721.50)	\$ 2,802.01
	Hopetoun	\$ 8,433.94	\$ -	\$ (7,477.83)	\$ 956.11
	Warracknabeal	\$ 16,021.49	\$ -	\$ (13,524.82)	\$ 2,496.67
Total		\$ 34,978.94	\$ -	\$ (28,724.15)	\$ 6,254.79
Rural Kerbside Recycling	Dunmunkle	\$ 2,113.80	\$ (27.45)	\$ (1,923.80)	\$ 162.55
	Hopetoun	\$ 1,891.23	\$ -	\$ (1,629.09)	\$ 262.14
	Warracknabeal	\$ 1,504.80	\$ (24.42)	\$ (1,480.38)	\$ -
Total		\$ 5,509.83	\$ (51.87)	\$ (5,033.27)	\$ 424.69
Municipal Charge	Dunmunkle	\$ 124,320.92	\$ (5,245.84)	\$ (77,339.87)	\$ 41,735.21
	Hopetoun	\$ 144,730.63	\$ (4,669.28)	\$ (80,059.61)	\$ 60,001.74
	Warracknabeal	\$ 179,379.52	\$ (5,338.96)	\$ (111,948.80)	\$ 62,091.76
Total		\$ 448,431.07	\$ (15,254.08)	\$ (269,348.28)	\$ 163,828.71
SDL/Bins/Fire/Old Municipal Charge	Dunmunkle	\$ 6,451.80	\$ -	\$ (463.17)	\$ 5,988.63
	Hopetoun	\$ 4,635.39	\$ -	\$ -	\$ 4,635.39
	Warracknabeal	\$ 5,267.80	\$ -	\$ -	\$ 5,267.80
Total		\$ 16,354.99	\$ -	\$ (463.17)	\$ 15,891.82
Credits	Dunmunkle	\$ -	\$ -	\$ (17,110.12)	\$ (17,110.12)
	Hopetoun	\$ -	\$ -	\$ (17,295.63)	\$ (17,295.63)
	Warracknabeal	\$ -	\$ -	\$ (97,756.83)	\$ (97,756.83)
Total		\$ -	\$ -	\$ (132,162.58)	\$ (132,162.58)
Fire Services Fixed Charge	Dunmunkle	\$ 229,363.67	\$ (16,800.00)	\$ (156,869.75)	\$ 55,693.92
	Hopetoun	\$ 262,660.78	\$ (12,400.00)	\$ (179,104.52)	\$ 71,156.26
	Warracknabeal	\$ 332,529.07	\$ (19,450.00)	\$ (229,379.31)	\$ 83,699.76
Total		\$ 824,553.52	\$ (48,650.00)	\$ (565,353.58)	\$ 210,549.94
Fire Services Levy	Dunmunkle	\$ 137,491.92	\$ -	\$ (122,931.67)	\$ 14,560.25
	Hopetoun	\$ 162,891.34	\$ -	\$ (148,448.01)	\$ 14,443.33
	Warracknabeal	\$ 185,166.55	\$ -	\$ (165,272.93)	\$ 19,893.62
Total		\$ 485,549.81	\$ -	\$ (436,652.61)	\$ 48,897.20
Grand Total		\$ 13,862,488.72	\$ (265,857.05)	\$ (11,267,265.44)	\$ 2,329,366.23

% Outstanding of Rates & Charges

16.80%

% Outstanding 2015

16.23%

% Outstanding 2014

14.93%

% Outstanding 2013

15.29%

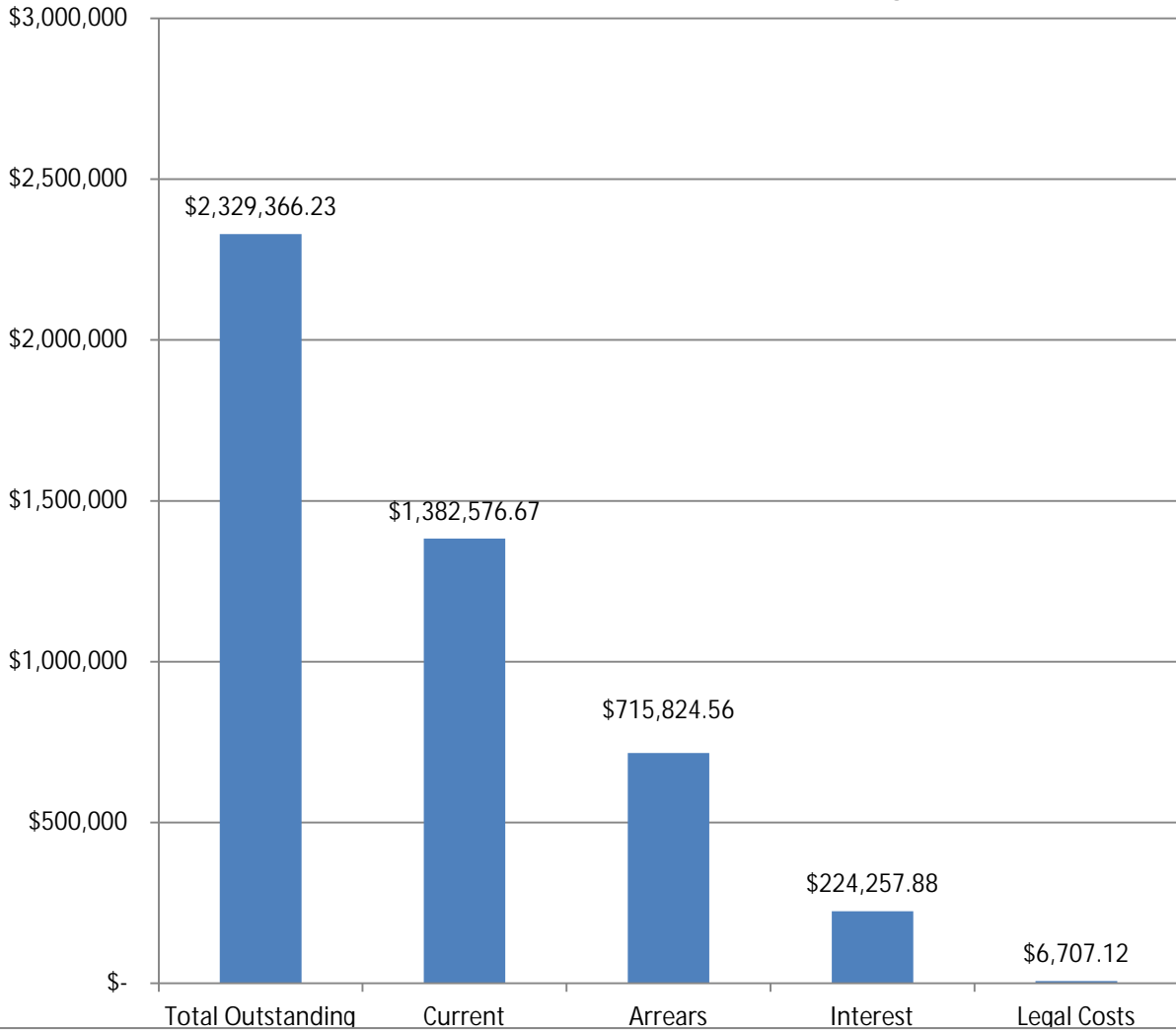
% Outstanding 2012

15.63%

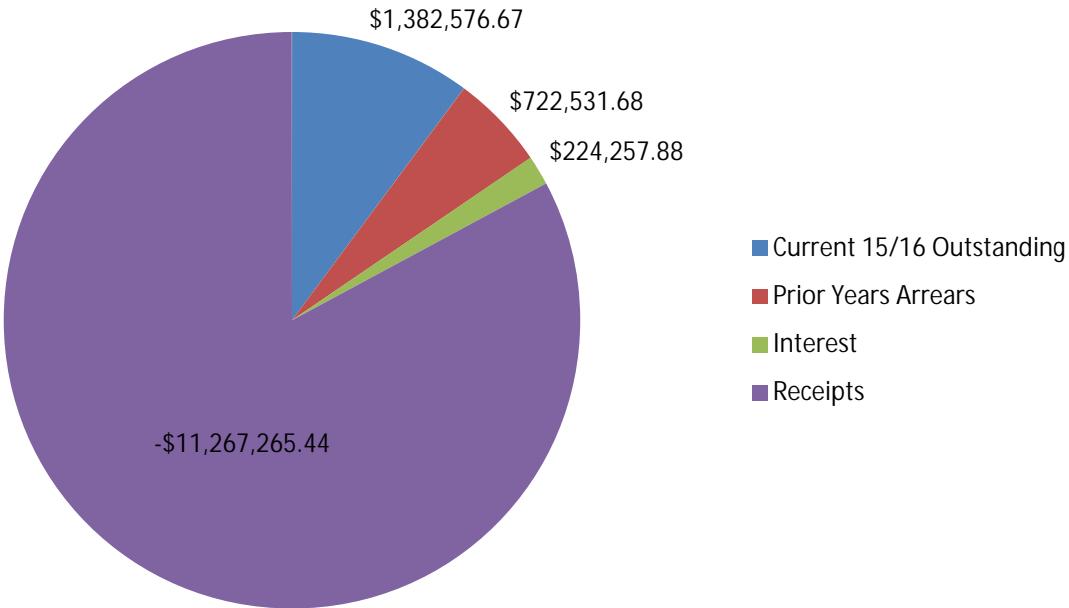
Recommendation

That the report be received.

Breakdown of Rates Outstanding



Breakdown of Rates



Application Identifier x (ppr v0.04)	Application type	Property Location					Estimated Cost of Works	Proposed Use or Development	Applicant Details			Date Application Received	Responsible Authority Outcome	Date of Responsible Authority Outcome
		Street Address		Crown Description	Lot on Plan				Name	Street Number, Name,	Locality			
		Street Number, Name, Type	Locality	Allotment, Parish/Township	Lot	Plan								
1.1	1.2	1.3.1.1	1.3.1.2	1.3.4	1.3.5.1	1.3.5.2	1.7	1.8	1.9.1	1.9.1.1	1.9.1.2	2.1	4.1	4.2
TP69-15	New application	Reeds Rd	Lascalles	CA37 Parish Gama			25,000	Use and Development of Land for mineral extartction (Gypsum Extraction)	Mark Smith	32 Campbell St	Birchip	27/10/2015	In progress	
TP71-15	New application	Horsham-Lubeck Rd	Lubeck		Lot 1	TP550168C	9,500	Development of land by Building works	James Golsworthy Consulting	PO Box 1650	Mildura	29/10/2015	Permit issued by a delegate of the Responsible Authority	22/02/2016
TP72-15	New application	Patchewollock Sea Lake Road	Patchewollock	CA19A	Lot 1	TP374377X	350,000	Use and Development for a Rural Store	Wade Humphreys	PO Box 40	Nullawil	23/10/2015	In progress	
TP73-15	New application	Tarkedia Nulland Road	Minyip	CA 75 parish of Nullan			0	Use of land for Stone Extraction	Yarriamabick Shire	PO Box 243	Warracknabeal	09/11/2015	Permit issued by a delegate of the Responsible Authority	15/02/2016
TP74-45	New application	Yaapeet North Rd	Yaapeet	CA 34	Lot 1 & 2	PS619510B	0	Gypsum Mining	Paul & Robert Lester	PO Box 83	Rainbow	09/11/2015	In progress	
TP81-15	New application	Taylor's Rd	Bangerang	CA86 & 86A Parish Nullan			100000	Use and Development of Land for Stone Extraction	Yarriamabick SH	PO Box 243	Warracknabeal	07/12/2015	Permit issued by a delegate of the Responsible Authority	01/02/2016
TP82-15	New application	Kewell North-School Rd	Kellalac	CA 226, Parish Kewell East			100000	Use Land for Stone Extraction	Yarriambiack Shire Council	PO Box 243	Warracknabeal	09/12/2015	Permit issued by a delegate of the Responsible Authority	01/02/2016
TP85-15	New application	Sheep Hills-Minyip Rd	Sheep Hills		Lot 1	LP992	200000	Construction of Telecommunications Facility	Telstra Corp Ltd	3/157 Martin St	Brighton	15/12/2015	In progress	
TP86-15	New application	Dyers Estate Road	Rupanyup	CA108 Parish Burrum Burrum			100000	Use Land for Stone Extraction	Yarriambiack Shire Council	PO Box 243	Warracknabeal	17/12/2015	Permit issued by a delegate of the Responsible Authority	15/02/2016
TP88-15	New application	The Avenue	Warracknabeal	CA23A, Parish Werrigar			0	Extend Licensed Area	William Kerr	PO Box 401	Warracknabeal	21/12/2015	Permit issued by a delegate of the Responsible Authority	15/02/2016
TP89-15	New application	Cnr Soldiers Ave and Hamilton St	Murtoa		Lot 1	TP89177L	300000	Assembly Building	Sebastian Costantino	GPO Box 1681	Melbourne	04/01/2016	Permit issued by a delegate of the Responsible Authority	22/02/2016
TP01-16	New application	4 Currawa Street	Patchewollock		Lot 1	TP166317D	250,000	Construction of Telecommunications Facility	Telstra Corp Ltd	3/157 Martin St	Brighton	03/02/2016	Permit issued by a delegate of the Responsible Authority	29/02/2016
TP02-16	New application	56 Brook St	Woomelang		1(pt) & 2 (pt)	TP918336K	200,000	Industrial shed	North-West Ag	173 Curlewis St	Swan Hill	20/01/2016	Permit issued by a delegate of the Responsible Authority	29/02/2016
TP03-16	New application	3 Albrechts Rd	Murra Warra	CA89, Parish of Kewell West			200000	Construction of Telecommunications Facility	Visionstream	Locked Bag 4001	Heatherton	27/01/2016	In progress	
TP05-16	New application	13 Marma St	Murtoa		Lot 2	LP134765	24,000	Construction of a Garage	Robin Barber	PO Box 669	Horsham	09/02/2016	In progress	
TP06-16	New application	20 Lyle St	Warracknabeal	CA8, Parish Werrigar			15,750	Construction of a Garage	Michael Templeton	20 Lyle St	Warracknabeal	11/02/2016	Permit issued by a delegate of the Responsible Authority	29/02/2016