

# Locations of Heavy Vehicle Parking in Urban Areas



Yarriambiack  
SHIRE COUNCIL

## Abstract

This document is a proposal for the Council to introduce preferred locations of heavy vehicle parking in urban areas, providing opportunity for sleep and rest breaks.



## 1. Contents

2. Introduction .....	2
3. Background .....	2
4. Purpose of the document .....	2
5. Limitation of the document. ....	2
6. Key Assumption Features.....	2
7. Findings and Preferred Locations in Towns.....	3
7.1 Woomelang.....	3
7.2 Lascelles .....	3
7.3 Hopetoun .....	3
7.4 Beulah .....	4
7.5 Warracknabeal .....	4
7.6 Minyip.....	4
7.7 Rupanyup .....	4
7.8 Murtoa .....	5
8. Additional Recommendations.....	5
9. References .....	5
10. Appendix .....	5

## 2. Introduction

This document was prepared to show the long term urban heavy vehicle parking locations around the Yarriambiack Shire. To find the appropriate locations for sleep and rest breaks for truck drivers. A number of consultations with outdoor Shire staff, truck drivers, transport contractors and the general public has been completed for all the following towns: Woomelang, Lascelles, Hopetoun, Warracknabeal, Minyip, Murtoa and Rupanyup.

## 3. Background

Trucks and heavy vehicles are permitted to travel on local rural roads, up to B-Double combinations.

In recognition of the growing freight demand as well as for managing and improving local streets, there is a significant problem within the municipality and poses several issues including the impact on neighborhoods, safety risks, obstruction or impeding vision, potential damage to infrastructure and noise creation for residential properties.

## 4. Purpose of the document

The purpose of this document is to assist the Council in planning, design and prioritization of heavy vehicle rest stops to accommodate the need for overnight sleeping and rest opportunities.

## 5. Limitation of the document.

- The document only guides vehicles longer than 9m and greater than 10.5 tonnes.
- The findings of heavy vehicles are only in Woomelang, Lascelles, Hopetoun, Warracknabeal, Minyip, Murtoa, and Rupanyup towns. The study excludes small towns: Tempy, Speed, Patchewollock, Turriff, Brim, Yaapeet, and Sheep Hills.



*Figure 1 An example of a heavy truck greater than 9m*

## 6. Key Assumption Features

The following assumptions were made for finding suitable truck parking locations in urban areas:

- Pull-through capability of road (i.e. no reversing movements)
- Road alignment - maximum sight distance, straight alignment
- Road parking capacity
- Quiet locations – away from residents
- Close to the amenities/facilities if possible
- Separation of road lane

## 7. Findings and Preferred Locations in Towns

### 7.1 Woomelang

During the research of this town, no specific locations are found for the long-term parking for heavy vehicles. Only, one can observe a short-term stop location for the pick-up of food and use of amenities. To do so, the preferred location in Woomelang is Brook Street and Gloucester Avenue.

### 7.2 Lascelles

**Preferred Location:** West side of Watchunga Street north of Sea lake Lascelles Road.

Truck drivers usually park in this location for the purpose of using the facility and accommodation.

#### **Upgrade requirements**

1. Installed truck parking signs for showing the designated area to park heavy vehicles.
2. It requires a surfacing treatment (approx. 50m) including widening.

### 7.3 Hopetoun

**Preferred Location 1:** Vacant space west side of Cumming Street, corner of Strachan Street

The location allows truck parking on the western side of town and access to public toilet facilities.

#### **Upgrade requirements**

1. Surface treatment including laying and compaction of gravel material, providing adequate space.
2. To keep the street organized, truck parking signs are needed.

**Preferred Location 2:** North end of Lascelles Street

The location is at the north end of Hopetoun town, within walking distance of Caravan park for using facilities (toilets and water supply).

The location accommodates safe operation and freedom of traffic movements and out of the community as well as road users.

#### **Cost Estimation**

A total of \$6,000 is estimated to construct a gravel shoulder at Cumming Street.

## 7.4 Beulah

**Preferred location:** Parking bay along east side Henty Hwy, south of Beulah Rainbow road

## 7.5 Warracknabeal

**Preferred location:** Warracknabeal Sale Yards Site, East side of Stawell Warracknabeal Road opposite Warracknabeal Sale yards.

The location served for a long time as heavy vehicle parking and no further upgrading is required at this stage.

The additional location is Werrigar Roadhouse, which has a well-managed place for parking and resting of trucks and drivers. This site has been approved by the owner of the establishment.

## 7.6 Minyip

**Preferred Location:** Mill Street between Stawell Warracknabeal Road and Market Street

### Upgrade requirements

1. A widening section is required along the Mills Street for the parking or storage of a heavy vehicle
2. Truck parking signs also required.

### Cost Estimation

A total \$6,000 is estimated to construct a gravel shoulder at Mill and Johnston Streets.

## 7.7 Rupanyup

**Preferred Location 1:** McIntyres Road, West side of Stawell Warracknabeal Road, South side of Rupanyup Depot

### Planning requirements

1. A site requires clearing dumped materials, gravel spreading and compacted over the parking area.
2. Truck parking signage.

**Preferred Location 2:** Cromie Street, between Dyer Street and Walter Street, west side.

### Upgrade requirements

1. Truck parking signage.

### Cost Estimation

The estimated cost for shoulder construction and widening is \$7,000.

## **7.8 Murtoa**

**Preferred Location:** Murtoa Glenorchy Road (Corner of Racecourse Road and Murtoa Glenorchy Road)

The plan is to use the road reserve land for making space for truck parking.

Advantages of this location:

- More traffic flow without interrupting the Murtoa Glenorchy Road.
- Less disruption to adjoining neighbours and free from noise, dust, fumes, vibration, odor, or potentially hazardous loads.

### **Upgrade requirements**

1. Trees need to be trimmed from the preferred location.
2. For access of vehicles, culverts require to be installed for roadside table drain.

### **Cost Estimation**

An estimated \$20,000 is required for the construction of gravel surface, tree trimming and establishment of culverts on both entry and exit points.

## **8. Additional Recommendations**

A detailed investigation is necessary in terms of cost associated with construction of short term parking bays.

## **9. References**

- Yarriambiack Shire Council – General Local Law No.5
- Austorads – Guidelines for the Provision of Heavy Vehicle Rest Area Facilities

## **10. Appendix**

Maps for heavy vehicles parking showing locations in each town.



TOWN-HOPETOON

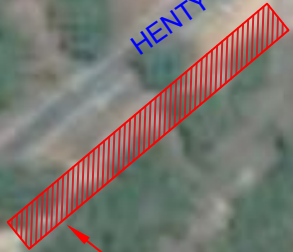
LOCATION 2 - CORNER OF CUMMINGS ST AND STRACHAN ST

CAMPBELL STREET

HENTY HIGHWAY

LASCELLES STREET

CONRAN STREET



PROPOSED TRUCK PARKING

TOWN-HOPETOUN

LOCATION 1 - NORTH END OF HENTY HIGHWAY

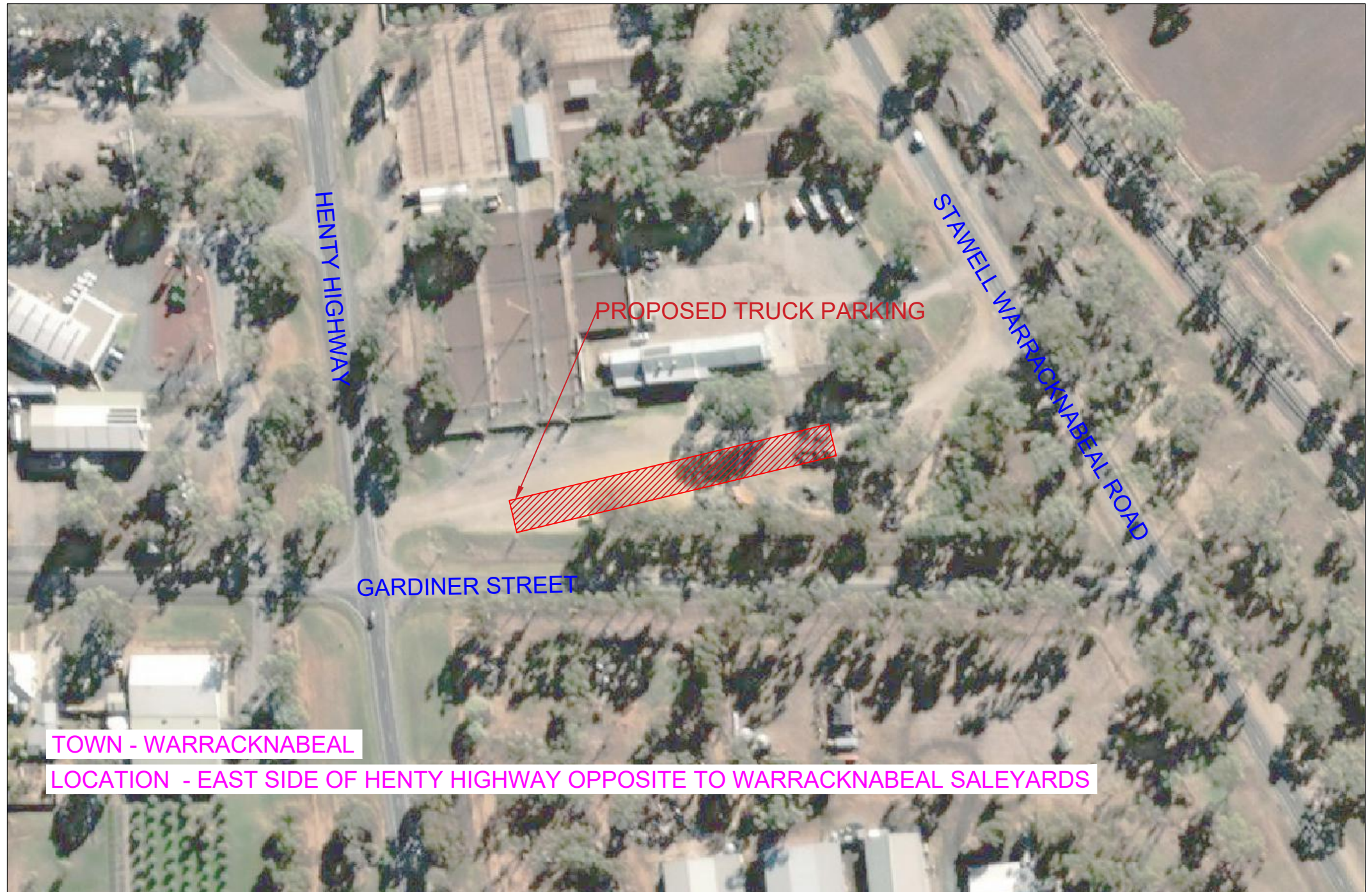






TOWN- LASCELLES

LOCATION - CORNER OF WYCHUNGA STREET AND SEA LAKE LASCELLES ROAD



PROPOSED TRUCK PARKING

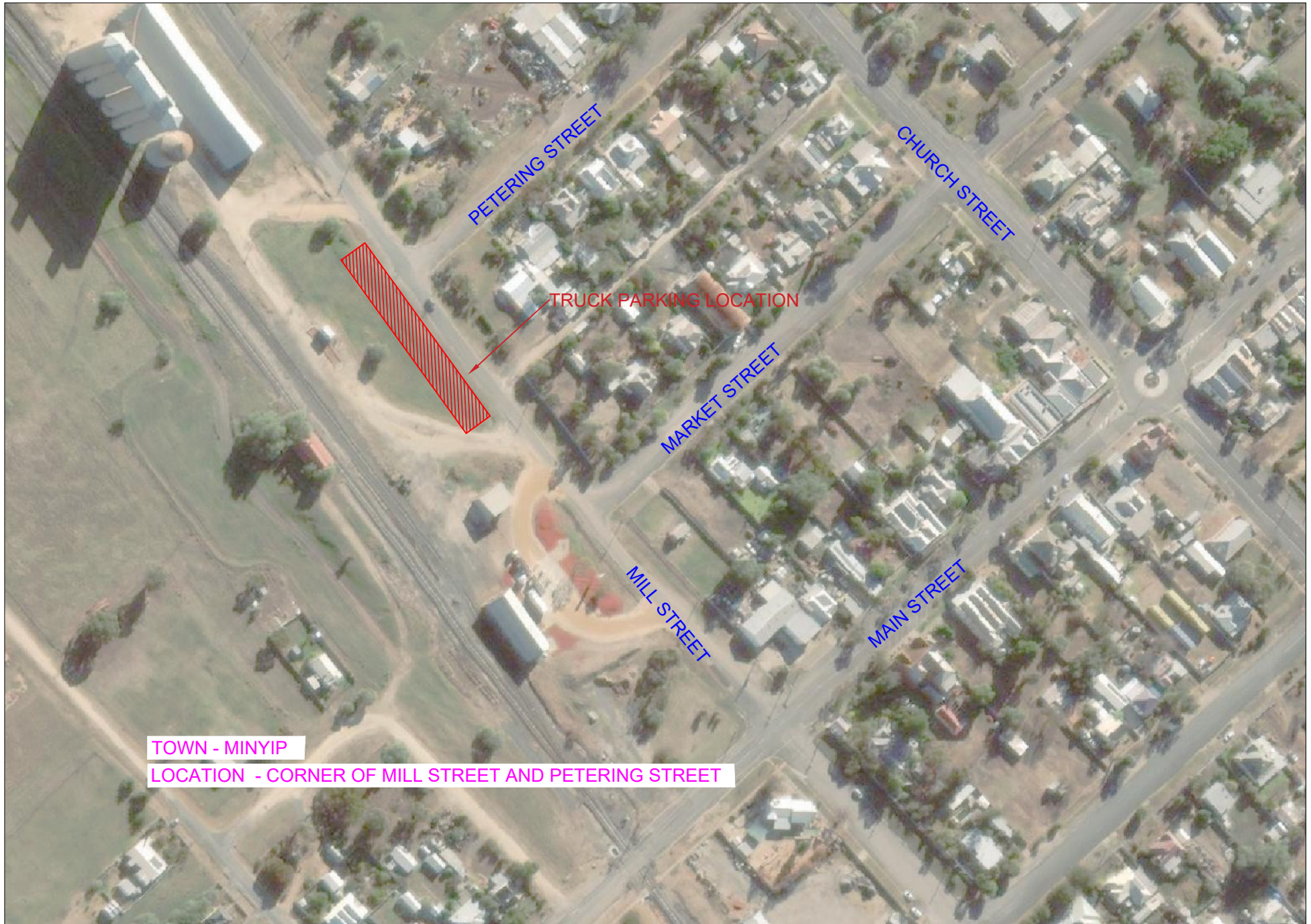
HENTY HIGHWAY

STAVELL WARRACKNABEAL ROAD

GARDINER STREET

TOWN - WARRACKNABEAL

LOCATION - EAST SIDE OF HENTY HIGHWAY OPPOSITE TO WARRACKNABEAL SALEYARDS



TOWN - MINYIP

LOCATION - CORNER OF MILL STREET AND PETERING STREET



CEMETERY ROAD

DYER STREET

STAWELL WARRACKNABEAL ROAD

TRUCK PARKING LOCATION

McINTYRES ROAD

TOWN - RUPANYUP

LOCATION 1 - McINTYRES ROAD, ON SIDE OF FUEL STATION

LOCATION 2 - CORNER OF DYER STREET AND McINTYRES ROAD



TRUCK PARKING LOCATION



DYER STREET

TAYLOR STREET

WALTER STREET

CROMIE STREET

TOWN - RUPANYUP

LOCATION - CORNER OF WALTER STREET AND CROMIE STREET



RACECOURSE ROAD

LAKE STREET

FRIEND STREET

LLOYD STREET

TRUCK PARKING LOCATION

TOWN - MURTOA

LOCATION - CORNER OF RACECOURSE ROAD AND GLENORCHY ROAD

Note: The trees on the proposed truck parking location will be trimmed.



BIRCHIP - RAINBOW ROAD

PHILLIPS STREET

HENTY HIGHWAY

GLADSTONE STREET

TRUCK PARKING LOCATION

TAVERNERS STREET

TOWN - BEULAH

LOCATION - CORNER OF HENTY HIGHWAY AND BIRCHIP-RAINBOW ROAD