

# Yarriambiack Heritage Trail



TAKE A JOURNEY  
BACK IN TIME

## Trail Map



Enjoy the Heritage Trail and please be sure to keep this brochure for your next visit or pass it to a friend who is planning theirs.

Yarriambiack Shire Council acknowledges the Traditional Owners of this land, the Wotjobaluk, Jaadwa, Jadawadjali, Wergaia and Jupagulk people and pays its respects to their Elders past, present and emerging.



SILOS *Sunsets* STORIES *Scenery* SPECTACULAR



In collaboration with the  
Victorian State Government



Scan the QR code to learn more about tourism and sites to visit in Yarriambiack.



# Yarriambiack Heritage Trail

Yarriambiack in Victoria's north-west covers an area of some 7,326 square kilometres. Famous for its wheat crops and sheep industry, the area also has a rich Aboriginal and colonial history.

Visitors to Yarriambiack are often astonished to discover the rich sights, sounds and heritage that the region has. Much of it carefully looked after and wonderfully displayed by various local groups and their differing museums. The Yarriambiack Heritage Trail provides visitors with a quick guide to five of these fascinating places and their collections. You are encouraged to chat with the locals at each museum, all of whom are passionate about history and heritage and will quickly share stories that will make the objects on display reveal their stories and come to life.



## Hopetoun & District Historical Society



Hopetoun has a rich and astonishing history including wool and later cropping. This is the story of the district. Visit three sites, with two open regularly. The Lake Corrong Homestead was built in 1846 by Peter McGinnis. The Limestone Primary School houses our museum, archive and temporary exhibitions featuring an eclectic collection of heritage and memorabilia from the 1870s to the present day.

Lake Corrong Homestead: 88 Evelyn Street, Hopetoun  
Open every Friday 9.30am–12noon  
Admission charges apply  
Phone 0413 232 614

Limestone Primary School: Corner Garrard and Hopetoun-Yaapect Road open by appointment.  
f Hopetoun and District Historical Society Inc.

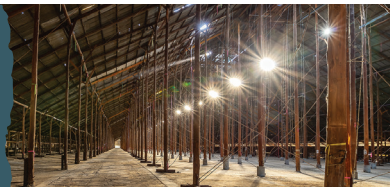
## Wheatlands Warracknabeal



If farming machinery is your fascination, this museum is a must see! With more than four galleries filled with farming machinery from across the world and through time, Wheatlands is a haven for people who love understanding how things work, want to learn more about agriculture and farming in Australia, or just appreciate the ingenious ways innovative farmers have advanced machinery.

34 Henty Highway, Warracknabeal  
Open Friday–Monday 10am–12noon and 1–5pm  
Tuesday – Thursday open by appointment  
Admission charges apply  
Phone 5389 1616 / 0437 393 876  
www.warracknabealhistory.org.au  
f wheatlandswarracknabealmuseum

## Murtoa Stick Shed



The iconic, nationally Heritage listed Murtoa Stick Shed was built in 1942 as an emergency grain store during World War 2. The Stick Shed (previously known as the Murtoa No. 1 Grain Store) is a testament to local ingenuity and Australia's 'can-do' attitude. This vast space, with its roof held high by 560 unmilled mountain ash timber poles, is a heritage listed building that is sometimes referred to as the 'Cathedral of the Wimmera'.

1471 Wimmera Highway, Murtoa  
Open daily 10am–3pm  
Admission charges apply  
Group bookings by appointment  
Phone 0429 944 673  
Email thestickshed@gmail.com  
www.thestickshed.com.au  
f thestickshed

## Rupanyup Woods' Heritage Museum



Woods' Museum houses the vast and varied collections of retired farmers John and Michael Woods, collected over three generations on a family farm.

Step back in time as you journey through a replica of Rupanyup's main street, onto faithfully presented 'Grandma's House' and 'Mum's House' and into the stunning collection of ball gowns, wedding dresses and much more.

109 Wimmera Highway, Rupanyup  
Open daily 9am–4pm  
Admission charges apply  
Group bookings by appointment  
Phone 0427 159 154  
Email woodsheritagemuseum@gmail.com  
f woodsmuseum.rupanyup

## Murtoa Museum Precinct



Murtoa Museum Precinct is operated by the Murtoa and District Historical Society and includes four sites: the old Railway Water Tower; Concordia College; Concordia Bell Tower; and, Murtoa Railway Station.

Discover the James Hill Taxidermy collection, or if your interest is railways, early district history, industry or the Lutheran faith there is something to interest visitors young and old.

1 Comyn Street, Murtoa  
Open daily 12noon–2pm or by appointment  
Admission charges apply  
Phone 0429 944 673  
www.murtoamuseum.com.au  
f murtoamuseum