



ANZAC PARK

Warracknabeal

The epicentre of sport

Yarriambiack Shire is in the heartland of the Wimmera Southern Mallee in North West Victoria. Covering 7158 square kilometres of land, Yarriambiack is a major agricultural and food producing region, as well as providing a broad range of opportunities in other industries including education, construction, retail and tourism.

Home to the original Silo Art Trail, Yarriambiack Shire continually strives for excellence and aims to serve its community through strategic, sustainable and innovative projects.

ANZAC Park Warracknabeal is currently home for the following sporting and community organisations:

- Cricket
- Fire Brigade
- Football
- Hockey
- Netball
- Playgroup
- RSL
- Swimming
- Tennis



“
Sport and recreation is the fabric that holds rural communities together.
”





Where history and community are celebrated

ANZAC Park is the largest sport and recreational space in the town, providing access for competitive and passive sport and recreation to the Warracknabeal community.

The ANZAC Park user groups celebrated the centenary of the oval at ANZAC Park in April 2023, during a Warrack Eagles Football Netball Club home game.

Although ANZAC Park is predominately a sports reserve, it has an important secondary open space function as a social/family recreation area. It can accommodate a significant amount of unorganised physical and social activity.



ANZAC Park facilities are outdated, in need of desperate refurbishment and upgrades to accommodate the various user groups and increasing use of the facility. With over 10 user groups calling ANZAC Park home, the grounds and buildings are a hive of activity year-round. The reserve is the only sports precinct in Warracknabeal and has a good range of facilities for different age groups. It does not however cater well for people with a disability or the ageing population of our community.

The Challenges

The reserve is made up of one parcel of land that is Crown land which is managed by the ANZAC Park Trustees as the Committee Of Management on behalf of the Department of Energy, Environment and Climate Action (DEECA).

The co-contribution required for funding is challenging for communities to raise the much-needed funds to upgrade the assets. Rural Council's have competing priorities for infrastructure.

With 18 communities and dozens of Council-owned sporting facilities across 20 sites, the challenge of prioritizing the 71 State Government owned facilities within Yarriambiack is complex in a highly competitive and finitely funded space.

Our Stories

ANZAC Park Trustees | Peter Clayton

ANZAC Park Trustees is the overarching committee responsible for the facility and reporting to the Department of Energy, Environment and Climate Action (DEECA).

The Committee works alongside the other user groups to ensure the facility is user-friendly and fit for purpose. The ageing infrastructure has seen minor remedial works over the years, but is at a point where the entire Reserve requires significant redevelopment to ensure all user groups can utilise the space to the best of their ability.



“ *The facilities at ANZAC Park range from 30 years old to over 100 years old. The Park is used for competitive and passive recreation year-round. The master plan has helped identify the priority areas for improvement for the future.*



Peter



Football | Zane Jess

The Warrack Eagles Football Netball Club is one of the major user groups that utilise the facilities at ANZAC Park with sixteen teams competing in the Wimmera Football Netball League and rising participation numbers. The Eagles utilise the Community Centre, oval and netball and tennis courts for training and game days.

The community centre facilities, whilst only 30 years old are not adequate for the large numbers that support the football and netball teams. For our large events we often use the Racecourse as our clubrooms aren't big enough.

The community centre layout was designed for viewing one sport - football and hockey in winter, and cricket in summer, but does not meet the current guidelines for the associated sporting associations for changerooms, accessibility and inclusion. With limited storage options, the Community Centre layout is outdated and needs redeveloped to ensure it meets the needs for all players, spectators and volunteers of the user groups into the future.

“ *Our visitor changerooms are some of the smallest in the League. We hire two cool rooms for every home game because our kitchen and bar are too small for our needs. To host finals we utilise the outdated swimming pool changerooms.*



Zane

Our Stories

RSL | Graeme Massey

ANZAC Park is a sacred ground for the Warracknabeal RSL Branch, home to the town's war memorials and hosting its annual events such as ANZAC Day and Remembrance Day. The RSL Branch has its own building on the north side of the oval and is in significant disrepair. The Master Planning process has deemed that the RSL Branch has opportunities to relocate to underneath the memorial grandstand once structural and remedial repairs are completed. This would house all memorabilia and provide an accessible meeting space.



The Molly Taylor kiosk building currently houses about 30 World War I and World War 2 honour boards from around the district. The building is nearly 100 years old.

“ *The whole ANZAC park precinct is a war memorial recognition and the permanent display of the significant collection of honour boards should be an essential part of any future development.* ”

Graeme



Fire Brigade | Cameron Whelan

The Fire Brigade Training Track and Water Tanks are located on the east of the Park. The Warracknabeal Fire Brigade utilise this facility for training twice a week during summer (October - March) and hosts an annual competition where competitors travel from across the state to compete. The track is also used during winter for CFA training drills.

The Warracknabeal CFA Branch has a strong junior and female contingent and will see the the track and facilities used for many years to come.

“ *We have had to refurbish the old toilet block to accommodate for women and have to bring our own water for the basins. To have access to a new fit-for-purpose change rooms and toilet facility would be a fantastic resource for our members and visitors.* ”

Cameron

Our Stories

Netball and Tennis | Lynley Clyne

The Warrack Eagles netball department has strong numbers across all grades. On a Thursday night during the netball season, over 60 players use the netball court over very methodical and timed schedule to ensure all players have the opportunity to play on the netball court.

With limited storage, the netball facilities have seen improvements in the past 5 years, but with proper planning could be vastly improved and utilised for other sports.



“ On training nights we have teams warm up on the tennis courts. With only one court, our players are disadvantaged for limited match play and training on sub-standard court conditions. ”

Lynley



The tennis facilities at ANZAC Park are some of the worst in the region and the safety concerns are highlighted in the reduction of player numbers and competitions hosted on site.

The tennis club has been forced to make the difficult choice to not apply to host past junior tournaments due to the condition of the courts, missing out on significant income generating opportunities as a result.

The lighting at the courts is inadequate for hosting competitions and the club is restricted to playing during daylight hours. As a result of the facilities and the seasonal conditions experienced in the Wimmera the tennis club is losing players to the sport. The club sees opportunities with the rising popularity of social tennis and night tennis, but is reliant on new courts and lights for this to transpire.

Whilst junior numbers are strong, there is concern that without safe courts and lighting conditions, these numbers will decrease over time.

“ We have strong numbers in juniors over summer but our adult ocmpetition has suffered with limited courts and poor lighting. With better facilities we would have more opportunities for hosting social competitions and tournaments. ”

Lynley

Our Stories

Swimming | Susan Knorpp

The Warracknabeal Memorial Swimming Pool and associated buildings are over 50 years old and in desperate need of redevelopment. The space includes a 50-metre, 8 lane swimming pool, with step entry, two junior water slides, changerooms, pool office and plant room, built in shade, toddler pool and memorial kiosk/entry. The pool provides a safe swimming and social place for all ages and employment opportunities through lifeguarding. The changerooms and kiosk and pool accessibility are archaic and not compliant to current standards.



“ The changerooms at the swimming pool have only had minor and reactive upgrades to plumbing and toilets when needed. The rest is original and well overdue for redevelopment. There are great opportunities to co-exist changerooms with netball and tennis to be used year-round. ”

Susan



Playgroup | Jayde Dempsey

Warracknabeal Community Playgroup is currently located under the 100 year old memorial grandstand at ANZAC Park.

Hosting events every week, Warracknabeal Community Playgroup provides social and networking opportunities for babies and children up to the age of 5 years old.

Playgroup has been hosted under the grandstand for a number years as a temporary solution until a new location can be sourced. The croft of the grandstand has not basic facilities but does not meet the standards of Playgroup Victoria. Whilst it has provided a place for Playgroup to continue in Warracknabeal, it is not the ideal or preferred location for our young families.

“ The facility is cold in winter and hot in summer and really not a safe place for babies and young children to play. The space is not suitable or compliant, with no toilets and no play space provided and has been a gap-stop measure for Playgroup to date. ”

Playgroup

Our Stories

Hockey | Warracknabeal Hockey Club

The Warracknabeal Hockey Club enters three teams in the Wimmera Hockey Association's winter premiership competition and one team in the Under 12 development program.

The open, womens and Under 12 competition includes teams from across the Wimmera region. The Hockey club utilises ANZAC Park for home games in consultation with the Wimmera Football Netball League season.



“The facilities at ANZAC Park allow us to host all hockey games in an effective way, but more accessible changerooms and a larger function room would take the facilities to the next level, allowing us to host regional competitions and Wimmera Hockey presentations.

” Hockey



Cricket

St Mary's Cricket Club, based out of Anzac Park competes in the Wimmera Mallee Cricket Association and fields teams in the A and B Grade competitions.

The club has a proud heritage and following, with a great atmosphere around the club, it is the club of choice for any cricketer from beginner to seasoned veteran.

Increased support for St Mary's has seen two sides fielded for the 2023/24 season, often fluctuating year to year.

“The grandstand's historical significance is really important and it's the perfect place to watch cricket in summer, so we'd love to see that building retained and maintained for spectators.

”

Cricket

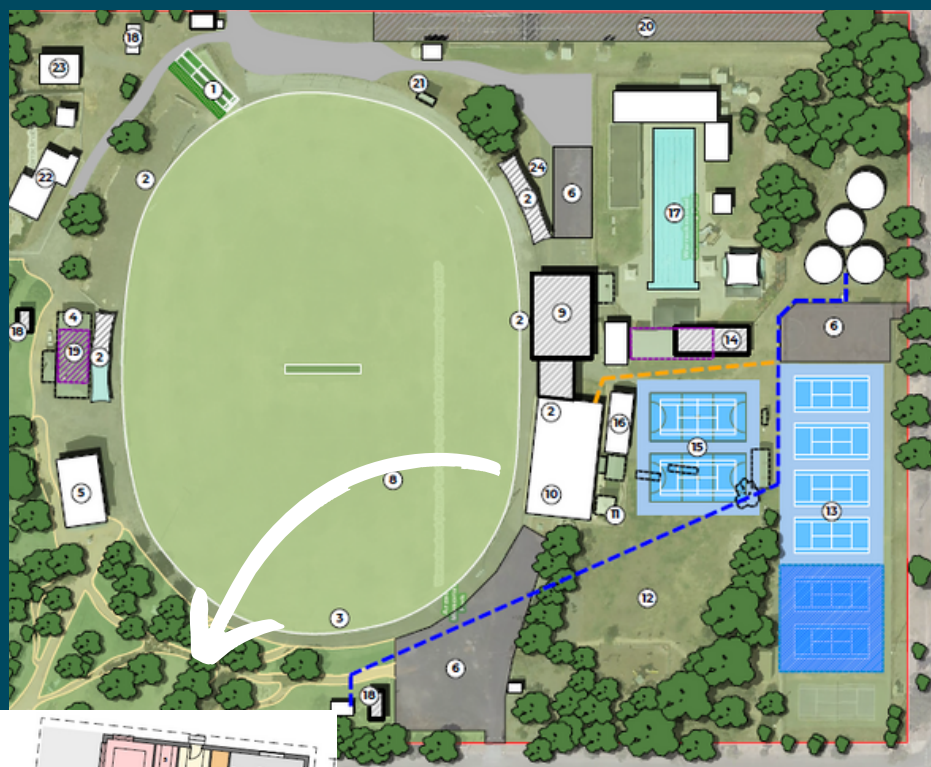
Balancing History and Future Needs

The Masterplan aims to balance the Park's historic significance as an important regional sports ground, but function as a central hub for community sport and recreation in Warracknabeal.

Full redevelopment and improvements to the netball courts, tennis courts, changeroom facilities for all sports and upgrades to the community centre are deemed priorities, along with retaining the memorial grandstand with improvements to structure and storage underneath.

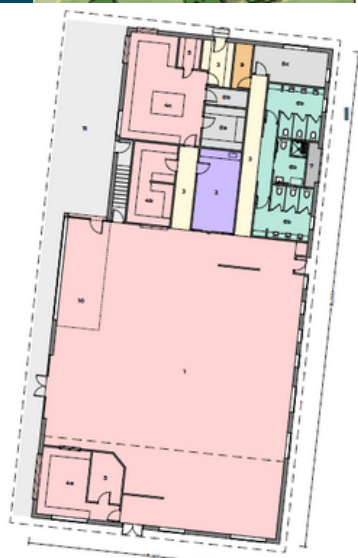
The Master Plan

In March 2023, the ANZAC Park Master plan was adopted by Council, outlining a clear direction for improved facilities for sport, recreation, community events whilst providing an opportunity to increase the economic impact to the Warracknabeal and wider Yarriambiack region.



Concept Design Key

1. Cricket nets
2. Spectator viewing
3. Oval
4. Molly Taylor Building
5. Grandstand
6. Parking
7. Garden and Trees
8. Hockey
9. Changerooms
10. Community Centre
11. BBQ
12. Green Space
13. Tennis
14. Netball, Tennis, Swimming Pool Changerooms
15. Netball Courts (2)
16. Netball Changerooms
17. Swimming Pool
18. Toilet Blocks
19. Storage
20. CFA Training Track
21. Scoreboard
22. RSL Building
23. ANZAC Park maintenance Shed
24. Refreshment area



The Solution

ANZAC Park user groups, along with Yarriambiack Shire Council have come together to develop a Master Plan for the future development of the community space.

The Master Plan outlines the following short, medium and long term improvements:

Short Term Priorities (\$3.159m)

- 4 tennis courts and lighting (\$580,000)
- New change rooms to meet minimum standards of AFL Victoria guidelines to be used football, hockey and cricket (\$1,766,800)
- Hoisted access into 50m pool (\$60,000)
- Grandstand refurbishment (\$259,000)
- Swimming Pool Assessment (\$5,000)
- Green Space Drainage Plan and upgrades (\$80,000)
- Removal of old scoreboard \$5,000)
- Preliminaries (\$412,200)

Medium Term Priorities (\$7.015m)

- Redevelop undercroft of Grandstand (\$297,00)
- Design new swimming pool change rooms combined with netball and tennis (\$1,740,060)
- Upgrade oval lighting and install goal nets (\$330,000)
- Install irrigation in garden area (\$83,200)
- Upgrade Community Centre \$2,099,700)
- Upgrade netball court lighting and facilities (\$604,700)
- Upgrade Green Space to improve space for athletics (\$155,000)
- Parking upgrades (\$370,000)
- Demolitions and Preliminaries, including replacement of toilet block (\$1,335,340)

Long Term Priorities (\$2.573m)

- Redevelop cricket nets (\$102,500)
- Playground (\$92,000)
- Replacement of Molly Taylor Kiosk
- Spectator shade and seating (\$758,000)
- Parking (\$630,000)
- Gardens and Trees (\$184,200)
- New storage and relocation of existing storage (\$408,160)
- Demolition and Preliminaries (\$398,140)

The Collaboration

With a total project cost of \$12,747m, the staged redevelopment of ANZAC Park Recreation Reserve requires long term goals and funding from all levels of government for success. With the entire Warracknabeal community and all user groups behind this project, Yarriambiack Shire Council is committed to seeing this long term plan come to life.

